



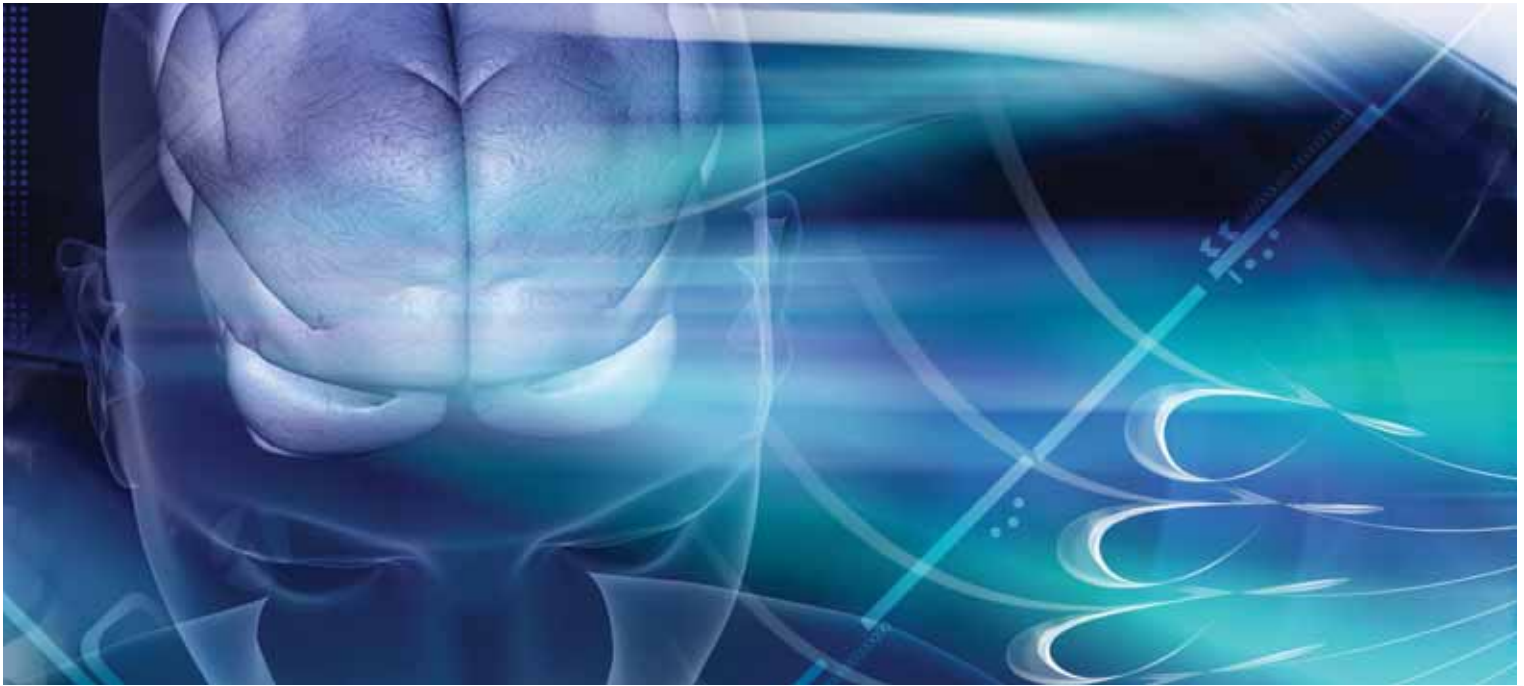
The University of
Nottingham

UNITED KINGDOM · CHINA · MALAYSIA

School of Psychology

<http://www.nottingham.edu.my/Faculties/Science/Psychology>

School of Psychology



The Malaysia Campus is a full and integral part of The University of Nottingham and offers students the Nottingham experience in an Asian setting. It is a global institution serving an international community of students and yet is firmly rooted in all that is distinctive about UK education—innovative teaching and assessment methods, which encourage independent, creative thinking. Quality standards are among the best in the world.



Welcome to the School of Psychology University of Nottingham Malaysia Campus

Psychology is the science of mental processes. It is a broad, exciting and useful topic. It covers the perceptions, thoughts, feelings and actions of people from infancy to old age, ranging in focus from individuals to groups, organisations and societies. Approaches to investigation range from field surveys to laboratory experiments, including studies that employ the latest brain imaging techniques. Following the University's success in winning the Nobel Prize for inventing magnetic resonance imaging, the School of Psychology conducts research with various neuroimaging and eye tracking facilities. Some of the research we do is "pure", with the aim of testing and developing theories, and some is "applied", with the aim of understanding how we learn, how accidents happen and what causes mental disorders.

The School of Psychology in Malaysia is situated in the award-winning Semenyih campus. The campus offers accommodation in numerous Halls of Residence within beautiful landscaped surroundings. There is a free bus service to Kajang, with train connections to KL Sentral. Our students come from all around the world. This gathering from countries with different cultures enriches the lives of everyone in the School, and is another indicator of our very high international reputation. The School itself is outgoing, with connections with other leading Universities throughout the world. In addition to the BSc degree courses of Psychology, students already admitted to the School may have the opportunity to study abroad in, for example, Australia, Canada, China, Europe, New Zealand, South East Asia and the USA.

Students who are studying at the School of Psychology at Nottingham University not only enjoy studying Psychology but also find the years of University life a very rewarding experience. Student life is rich in social, cultural and academic opportunities. We are very lucky to have an extremely diverse community, made up of people from many backgrounds at home and overseas.

I hope you will find your time in our School a happy and rewarding one.

Peter Mitchell,
Professor of Psychology and Dean of Science.



Course Structure

BSc (Honours) Psychology



Year 1	Year 2	Year 3
<p>Semester 1</p> <p>Cognitive Psychology Introduction to Social Psychology</p> <p>Semester 2</p> <p>Introduction to Cognitive Neuroscience and Biological Psychology Introduction to Developmental Psychology</p> <p>Full Year</p> <p>Practical Methods in Psychology Statistical Methods</p>	<p>Semester 1</p> <p>Cognitive Psychology 2 Conceptual & Historical Issues in Psychology and Personality & Individuals</p> <p>Semester 2</p> <p>Neuroscience and Behaviour Social and Developmental Psychology</p> <p>Full Year</p> <p>Practical and Statistical Methods 2 Statistical Methods 2</p>	<p>Semester 1 & 2</p> <p>The final year allows for greater flexibility and students have the opportunity to choose from a variety of advanced topics including Evolution of Brain and Behaviour, Clinical Testing and Assessment and Cognitive Neuroscience.</p> <p>Full Year</p> <p>Research Project</p>

Entry requirement :

- All Nottingham Foundation Programmes: Average pass marks of 40% and above, with good grades in Mathematics.
- A-Levels: BBB, in either Science or Arts subjects. Students with A-Levels that are substantially nonacademic (such as PE, Art or Drama) will be at a disadvantage in competition with students who have A-Levels with a strong academic component. (Psychology at A-Levels is not required).
- STPM: B+B+B+ or grade points of 3.33 in 3 subjects, excluding General Studies.
- SAM/AUSMAT/HSC: ATAR 86.
- Canadian Pre-U: 85% average based on 6 subjects.
- IB: 32 points with specified grades in Science or strong academic Arts subjects, including 5 points in Mathematics (SL).
- UEC: 5 A's, excluding Chinese Language.

- Other equivalent qualifications will be considered on a case-by-case basis.
- SPM/GCSE/IGCSE must have a minimum of Grade B in Mathematics.

English :

- SPM: Grade A
- GCE O-Level(1119): Grade B
- GCSE/IGCSE: Grade B
- IB: 5 points
- MUET Band 5 may also be considered
- IELTS: 6.5 (no less than 5.5 in any element)
- TOEFL (PBT): 570 with TWE 4.0
- TOEFL (iBT): 88

What our Students say...



Lailatulain Abbas

I find most of the modules very interesting. The lecturers know how to communicate with the students very well and that makes the lectures fun. I've been really curious about how the mind works and how it affects human behavior and this course gives me the exposure that I needed. The facilities available in the university are well-equipped, for example the sports complex and the student association building. Events organized by different clubs and societies are a great way of getting to know other cultures from various parts of the world for example the International Cultural Week event. I've been enjoying my time here in UNMC with my friends and I'm sure there's a lot more coming.



Anna Sim Chooi Fen

First and foremost, I personally feel that I have made the right choice in choosing this course. Lectures are fun and fascinating as there is active interaction between us (the students) and the lecturers. Even though it is a relatively new course in this campus, the quality of teaching is definitely excellent. The ambience in the classroom is conducive to learning and this enhances our understanding of the concepts being taught. In addition, students are encouraged to contribute during classes, be it in the form of questions or ideas. Students are also given the opportunity to venture into other optional modules to enhance their skills in other fields of interest, broadening their capabilities and opening more doors of opportunities later on. In my opinion, the lectures are not boring and long-winded. I like that fact that we can explore independently with the resources from the lab and library. Lecturers are also glad to help us in the topics that are harder to understand. I am definitely enjoying classes.

What our Students say...



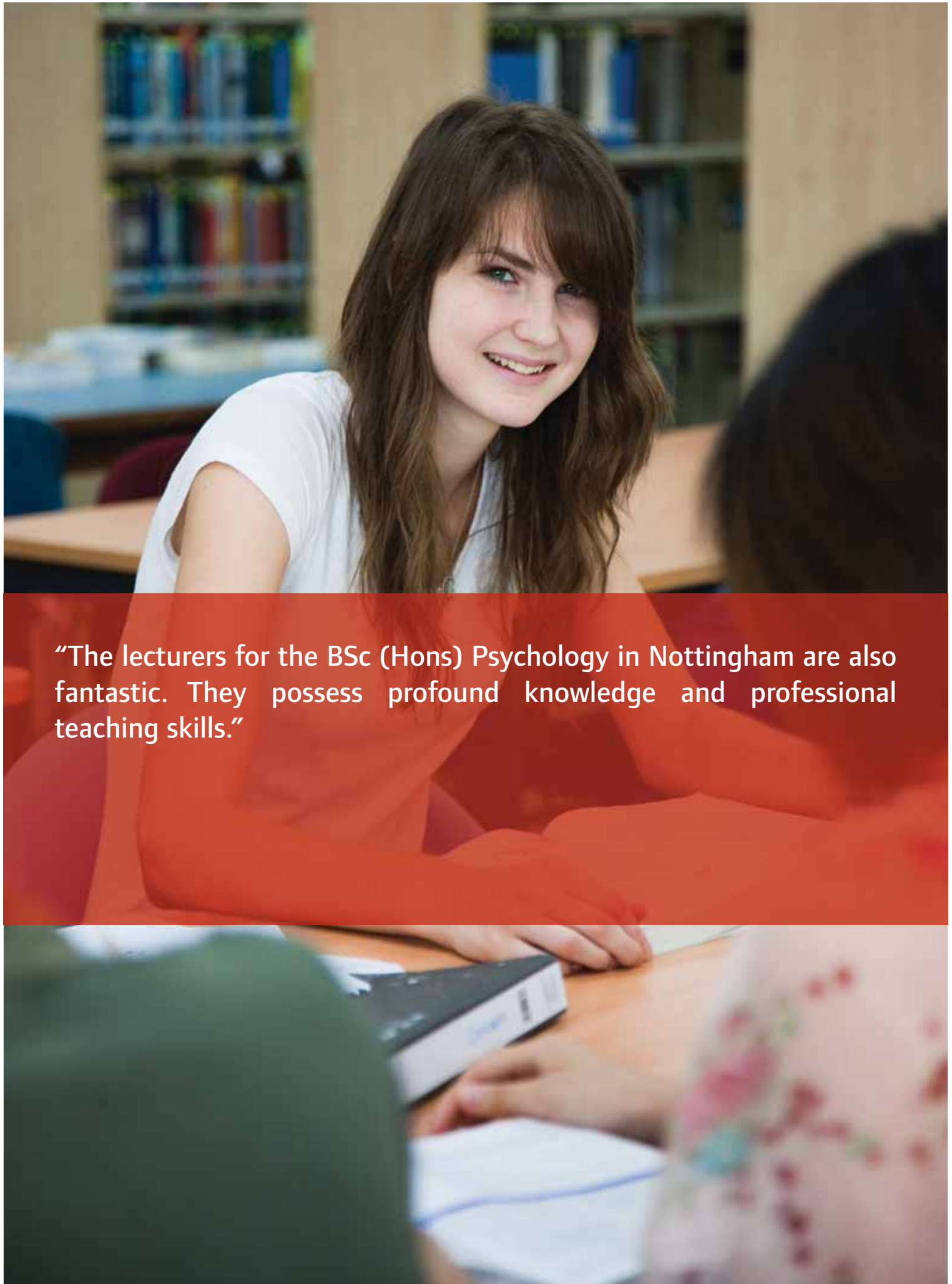
Christine Leong Xiang Ru

This is a new course that is definitely interesting and meaningful! My class is pretty small, with friendly peers and a welcoming atmosphere. My classmates are of different races and different nationality, allowing me to make a variety of friends and understand cultures other than Malaysia's. Although we have different mother tongues, we communicate together well in English. We often help each other in revisions, tutorials, research and assignments. The lecturers for BSc (Hons) Psychology in Nottingham are also fantastic. They possess profound knowledge and professional teaching skills. Lecturers teach in a lively manner in the class everyday, and students understand well and follow the lectures easily. My lecturers are also very approachable. They are capable of answering our questions, helping us to develop a stronger grasp of psychological knowledge. Besides, Nottingham has the best environment for students to study among the colleges in Malaysia I have known. The library and computer laboratory provided by the university are helpful for my research. In conclusion, the University of Nottingham has assisted me to go for my dream and I believe it gives me not only a degree but it also provides me with knowledge and experiences to face my future.



Lee Yee Mun

I am Lee Yee Mun, a first year student in BSc Psychology in Nottingham. There are several reasons to study psychology at Nottingham. Nottingham Malaysia campus in Semenyih has a very nice study environment; this is a big campus with good facilities. Nottingham is also building a new block for psychology students so that we can have our own laboratory and also to store our new apparatus from the UK, for example eye trackers and EEG. I believe that the apparatus and laboratories will provide a new experience in our study. Our lecturers are from overseas, they are very qualified, experienced, friendly and helpful people. They also like to share their research experience with all of us. We also have the opportunity to learn things from books and study support materials, and we are given the opportunity to attend seminars and also research talks to expand our knowledge further. Nottingham University won the Noble prize for the invention of MRI, furthermore Nottingham also has awards for high quality teaching. Nottingham is among the top UK Psychology courses. This course has just started in UNMC; it is very exciting and challenging because we are forming the Psychological Society here. Nottingham provides pure science psychology which is also the reason why I am here. Besides that, we are also given the opportunity to further our masters study in the winning laboratory in Nottingham UK for the Malaysian fee. Studying psychology in Nottingham is a very good choice and I really enjoy it very much.



“The lecturers for the BSc (Hons) Psychology in Nottingham are also fantastic. They possess profound knowledge and professional teaching skills.”

Staff at the School of Psychology



Prof. Peter Mitchell

Peter Mitchell is Professor in Psychology and Dean of Science at the University of Nottingham Malaysia Campus. Previously, he was Head of the School of Psychology in Nottingham UK. He has published around 100 scientific articles in leading international journals, has published six books and he is editor of the British Journal of Psychology. He has served as Chair of the Developmental Section of the British Psychological Society and as Chief Examiner for the Economic and Social Research Council UK PhD studentship competition. Before joining Nottingham University he worked at the University of Birmingham, University of Oxford, University of Wales and University of Warwick. He also served as visiting professor at McGill University in Canada.

Ms. Rika Imada

Ms Imada completed her undergraduate degree at Tohoku Gakuin University before going on to study for a Master of Education at the University of Massachusetts. Whilst at Massachusetts, Ms Imada also received a Certificate of Advanced Graduate Study from the School of Psychology. Before coming to Malaysia, Ms. Imada was working as an associate professor at Shinshu University, Faculty of Education, Japan. She was also visiting professor at the University of Nottingham's UK Campus. Ms Imada is a school and clinical psychologist. Her research interests include cognitive and perceptual processing in people with developmental disorders, as well as methods of psychological assessment.



Dr. Elizabeth Sheppard

Dr. Sheppard studied Experimental Psychology at the University of Oxford before completing her Masters in Psychological Research Methods and PhD at the University of Nottingham, UK. Her doctoral research used copying and drawing tasks to explore theories of perceptual processing in Autism Spectrum Disorders. Dr. Sheppard also spent three years working as a Research Fellow using eye-tracking methodologies to investigate driving abilities in Autism Spectrum Disorders.



Dr. Neil Mennie

Dr Mennie studied Neuroscience at the University of Sussex before completing a DPhil, also at Sussex. His doctoral research concerned eye movements and visual search in everyday tasks. After leaving Sussex, Dr Mennie gained extensive postdoctoral experience at the University of Rochester, USA, the University of Giessen, Germany and the University of Nottingham, UK. His research is in the field of active vision, and among his interests are the properties of anticipatory eye movements in everyday behavior.

Dr. Kirsten McKenzie

Dr McKenzie studied both the History and Philosophy of Science and Psychology as an undergraduate at the University of Auckland, New Zealand, before working as a Research Assistant and completing an MSc(Hons) at the Research Centre for Cognitive Neuroscience. She then moved to the UK in 2002 to conduct research at Glasgow Caledonian University, and in 2004 was awarded an Inter-Disciplinary Doctoral Training Scholarship to carry out her PhD on 'The Integration of Visual and Haptic Information in Spatial Frames of Reference' at the University of Nottingham's Institute of Neuroscience. Before taking up her position in Malaysia, Dr. McKenzie also spent three years as Research Fellow at the University of Manchester, UK, investigating perceptual integration and tactile illusions.



Dr. Ian Stephen

Dr Stephen studied Human Sciences as an undergraduate at University College London, UK. He then went on to complete a Masters degree at the University of Cambridge. From there he went to St Andrews, UK to complete his PhD. His doctoral research investigated the effects of colour and pigmentation on the perceived health of human faces. Before taking up his position in Malaysia, Dr Stephen gained postdoctoral experience at the University of St Andrews and the University of Bristol, UK. His research has had wide media coverage, including reports from the BBC, Daily Telegraph, LA Times, Fox News and The Indian.

Scholarships



Psychology High Achievers Scholarship

The University offers 2 full Academic Scholarships (tuition fees) to deserving students. The Scholarship is awarded to Psychology students in their first year of study for September 2011 intakes.

Qualifying Requirements: Applicants are required to demonstrate good general education achievements. Further, they must demonstrate in their application why they are deserving of this scholarship, their passion for the subject of psychology, and why they wish to pursue their education at The University of Nottingham Malaysia Campus.

How to Apply: Application forms can be obtained from the Admissions Office or downloaded from the website:

http://www.nottingham.edu.my/Students/Scholarships/Pages/8_PsychologyHighAchieversScholarship.aspx.

Applications are now invited and the closing date is **Friday, 26 August 2011**. Candidates will be notified by early September.

Tinggi Foundation Scholarship

The University is very fortunate to have the support of Tinggi Foundation, which offers scholarships to deserving students. The scholarship is worth 50% of the BSc Psychology undergraduate programme tuition fees and is open to Malaysian students only. Once awarded the scholarship will continue for each year of the student's undergraduate programme provided an average mark of 60% (upper second class degree) is achieved in each year's examinations.

How To Apply: This scholarship is available to students who have successfully registered/enrolled in the University's Undergraduate Programmes.

The deadline for submission is at the end of September every year. Please go to this link to obtain an application form:

http://www.nottingham.edu.my/Students/Scholarships/Pages/5-Tinggi_Foundation.aspx

A Full Fees Scholarship: MSc in Cognitive Neuroscience in the U.K.

We are pleased to announce that the best graduate in the BSc programme at Malaysia Campus will receive a commemorative certificate plus a full fees scholarship to study for the MSc in Cognitive Neuroscience and Brain Imaging in our Nobel-Prize winning laboratories in the UK.

For more information about the MSc in Cognitive Neuroscience in the UK, please visit

http://pgstudy.nottingham.ac.uk/postgraduate-courses/cognitive-neuroscience-and-neuroimaging-masters-msc_788.aspx

Reading list for incoming students



It would be useful to read at least one or two of the titles on this list before beginning your studies at Nottingham.

Any recent general introductory texts such as:

Smith, E.E, Nolen-Hoeksema S., Frederickson B.L. & Loftus G.R. (1993) *Atkinson & Hilgard's Introduction to Psychology* (Wadworth Thomson Learning)

OR

R. Gross (1993) *Psychology: The Science of Mind and Behaviour* (3rd edition) (Hodder)

These books will give an introduction to the nature and range of subject matter in the discipline:

J.W. Kalat. *Introduction to Psychology*. Brooks/Cole. 1996

OR

G. Miller (1964) *Psychology: The Science of Mental Life* (Penguin).

These books give an overview of some of the main topics within psychology. They are well-written and a pleasure to read, and are highly relevant to the whole course:

G. Underwood (2001) *Oxford Guide to the Mind* (Oxford University Press) (£9.99)

Mitchell, P. & Ziegler, F. (2007). *Fundamentals of Development*. Hove: Psychology



The University of
Nottingham

UNITED KINGDOM · CHINA · MALAYSIA

For enquiries about the programmes offered
by the School of Psychology please contact:

Director of Studies

School of Psychology

Prof Peter Mitchell

peter.mitchell@nottingham.edu.my

The University of Nottingham Malaysia Campus
Jalan Broga

For enquiries about admissions please contact:

Faculty Administrator

Faculty of Science

Ms Salma Abd Kadir

Salma.AbdKadir@nottingham.edu.my

The University of Nottingham Malaysia Campus



The University of Nottingham Malaysia Campus

KPT/JPT/DFT/US/B19

Jalan Broga, 43500 Semenyih,
Selangor Darul Ehsan, Malaysia

T: +6(03) 8924 8000 F: +6(03) 8924 8002

E: enquiries@nottingham.edu.my (Malaysians)

international.enquiries@nottingham.edu.my (Non-Malaysians)

Applications: admissions@nottingham.edu.my (Malaysians)

int-admissions@nottingham.edu.my (Non-Malaysians)