

SHUTTLE BUS & VAN SCHEDULE**Academic Year 2018 - 2019**

# 5	OUT	IN
Terus Maju bus	campus to TBS (Ter. Bersepadu Selatan)	TBS (Ter. Bersepadu Selatan) to campus
Monday - Friday No service on Public Holiday	6:15 PM * * This service will only pass and stop at MRT Sg Jernih station.	7:45 AM ** ** This service will pass and stop at MRT/KTM Kajang station as well MRT Sg Jernih station.
# 5	OUT	IN
Terus Maju bus	campus to TBS (Ter. Bersepadu Selatan)	TBS (Ter. Bersepadu Selatan) to campus
Saturday, Sunday and Public Holidays	(No Provisions)	(No Provisions)

All buses perform a one-way trip for each indicated departure time. Any changes or updates in the Shuttle Bus Schedule will be circulated via email and UNMC website. Kindly also consider using the "**WhereIsMyBus**" mobile App.

SHUTTLE BUS & VAN SCHEDULE

Academic Year 2018 - 2019

# 6	OUT		IN	
	campus to KAJANG KTM / MRT station		KAJANG KTM / MRT station to campus	
Terus Maju bus				
Monday - Friday	9:00 AM * 11:00 AM *	1:00 PM * 3:15 PM * 3:45 PM * 5:15 PM * 5:45 PM * 6:15 PM # 7:15 PM * 7:45 PM * 9:15PM * 11:15PM *	8:00 AM 8:15 AM 8:30 AM ** 10:15 AM	12:15 PM 2:15 PM 2:30 PM 4:30 PM 5:00 PM 6:30 PM 7:00 PM 8:30 PM 10:30 PM
	<p>* This service will pass and stop at MRT Sg Jernih station before proceeding to KTM Kajang station.</p> <p># This is the TBS service which will pass and stop at MRT Sg Jernih station before proceeding to TBS.</p>		<p>** This is the TBS service which will pass and stop at MRT Sg Jernih and KTM Kajang stations before proceeding to campus.</p>	

# 6	OUT		IN	
	campus to KAJANG KTM / MRT station		KAJANG KTM / MRT station to campus	
Terus Maju bus				
Saturday and Sunday including Public Holidays	7:30 AM * 9:30 AM * 11:30 AM *	12:30 NN * 2:30 PM * 3:30 PM * 4:30 PM * 5:30 PM * 6:30 PM * 8:30 PM * 10:30PM *	8:15 AM 10:30 AM 11:30 AM	12:30 PM 2:30 PM 3:15 PM 4:30 PM 5:15 PM 7:30 PM 9:30 PM 11:30 PM
	<p>* This service will pass and stop at MRT Sg Jernih station before proceeding to KTM Kajang station.</p>			

All buses perform a one-way trip for each indicated departure time. Any changes or updates in the Shuttle Bus Schedule will be circulated via email and UNMC website. Kindly also consider using the "*WhereIsMyBus*" mobile App.

SHUTTLE BUS & VAN SCHEDULE

Academic Year 2018 - 2019

# 7	OUT	IN
Terus Maju / UNMC Van	campus to TTS (Taman Tasik Semenyih)	TTS (Taman Tasik Semenyih) to campus
Monday - Friday No service on Public Holiday Note : UNMC Van (WYE 8207)	8:00 AM @ Van 12:30 PM @ Van 8:35 AM @ Van 2:30 PM @ Van 9:30 AM @ Van 3:00 PM @ Van 10:30 AM @ Van 4:00 PM @ Van 11:30 AM @ Van 5:00 PM @ Van 12:00 NN @ Van 6:00 PM @ Van 6:30 PM @ Van 7:00 PM @ Van 8:00 PM @ TM bus 10:00 PM @ TM bus 12:00 MN @ TM bus @ This service will pass and stop at Tiara East and Tetris Apartment.	8:10 AM @ Van 12:10 PM @ Van 8:35 AM @ TM bus 12:40 PM @ Van 8:45 AM @ Van 2:40 PM @ Van 9:40 AM @ Van 3:10 PM @ Van 10:40 AM @ Van 4:10 PM @ Van 11:40 AM @ Van 5:10 PM @ Van 6:10 PM @ Van 6:40 PM @ Van 7:10 PM @ Van @ This service will pass and stop at Tiara East and Tetris Apartment.

# 7	OUT	IN
Terus Maju bus	campus to TTS (Taman Tasik Semenyih)	TTS (Taman Tasik Semenyih) to campus
Saturday and Sunday	12:30 PM ## 4:00 PM ## 6:45 PM ## 9:30 PM ## This service will pass and stop at TTS first before proceeding to IOI City Mall.	10:30 AM 2:30 PM 6:15 PM # 9:15 PM # 11:15 PM # # This service from IOI City Mall will pass and stop at TTS first before proceeding to campus.

# 8	OUT	IN
Terus Maju bus	campus to TESCO Semenyih	TESCO Semenyih to campus
Monday - Friday	6:45 PM Direct Service, point to point.	9:00 PM Direct Service, point to point.

# 8	OUT	IN
Terus Maju bus	campus to TESCO Semenyih	TESCO Semenyih to campus
Saturday and Sunday	(No Provisions)	(No Provisions)

All buses perform a one-way trip for each indicated departure time. Any changes or updates in the Shuttle Bus Schedule will be circulated via email and UNMC website. Kindly also consider using the "**WhereIsMyBus**" mobile App.

SHUTTLE BUS & VAN SCHEDULE

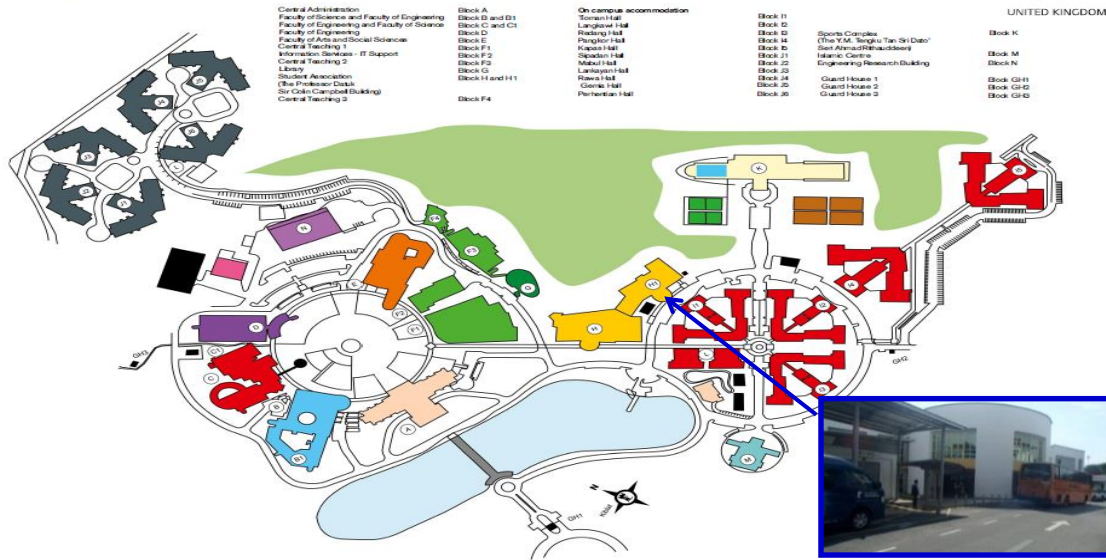
Academic Year 2018 - 2019

# 9	OUT	IN
	campus to Al-Ittihad Mosque, TTS campus to PGA Semenyih Pelangi Mosque	Al-Ittihad Mosque, TTS to campus PGA Semenyih Pelangi Mosque to campus
Terus Maju		
Fridays Only	12:45 NN 1:00 PM 1:15 PM Pick-up is at UNM Islamic Centre. Direct Service, point to point.	2:00 PM Buses will immediately depart from mosque after prayers.
6 Buses		
# 10	OUT	IN
	campus to KLTC (KL Teaching Centre)	KLTC (KL Teaching Centre) to campus
Terus Maju bus		
Monday - Friday	8:00 AM Van 4:00 PM Direct Service, point to point.	10:00 AM Van 9:45 PM Direct Service, point to point.
# 10	OUT	IN
	campus to KLTC (KL Teaching Centre)	KLTC (KL Teaching Centre) to campus
Terus Maju bus		
Saturday and Sunday including Public Holidays	8:00 AM Direct Service, point to point.	6:00 PM Direct Service, point to point.
# 11	OUT	IN
	campus to IOI City Mall, Putrajaya	IOI City Mall, Putrajaya to campus
Terus Maju bus		
Monday - Friday	(No Provisions)	(No Provisions)
# 11	OUT	IN
	campus to IOI City Mall, Putrajaya	IOI City Mall, Putrajaya to campus
Terus Maju bus		
Saturday and Sunday	12:30 PM ## 4:00 PM ## 6:45 PM ## ## This service will pass and stop at TTS first before proceeding to IOI City Mall.	5:30 PM # 8:30 PM # 10:30 PM # # This service will pass and stop at TTS first before proceeding to campus.

All buses perform a one-way trip for each indicated departure time. Any changes or updates in the Shuttle Bus Schedule will be circulated via email and UNMC website. Kindly also consider using the "**WhereIsMyBus**" mobile App.

CAMPUS BUS STOP

Campus map



SA BUILDING, BLOCK H1
GOOGLE MAP COORDINATE
Latitude: 2.943677
Longitude: 101.875867

TAXI SERVICES CONTACT LIST

Semenyih Sentral Taxi Station (6am -10pm)
Phone: 03-8724 0315

Kajang Taxi Station (6am – 11pm)
Phone: 03-8736 9585

Public Cab (24 hours)
Phone: 03-6259 2020
To KLIA Phone: 03-6259 1913

Sunlight Radio Taxi
Phone: 603-9057 5757, 9057 1111

Airport Limo & Taxi Service
Phone: 03-9223 8080, 03-9223 8949 (Booking Centre)

UpTown Ace SuperCab (Yellow Cab)
Phone: 03-9283 2333

Radio Taxi
Phone: 03-9221 7600

Disclaimer: The University of Nottingham Malaysia (UNM) is not endorsing any of these taxi service providers. This list is provided for the benefit and convenience of students who are not familiar with taxi companies around here.

Important Notes: UNMC is not responsible for any negotiations of taxi fare charges between the students and the supplier of any of the taxi providers solicited by the students. It is the responsibility of every student to be aware of the terms and legal matters of the business deals that is accepted in exchange for cash. You are advised to find out the taxi fare first (on the phone) before an agreement is made.

SHUTTLE BUS & VAN SCHEDULE

GUIDELINES & RULES

- 1 All users of the shuttle bus or van services provided by the university **must** show their **Student or Staff ID card** upon boarding into the
- 2 Users of the shuttle bus or van services provided **without** Student or Staff ID card may use other forms of identification for special
- 3 Please **queue** and board the vehicles in a **timely and orderly** manner. The buses will follow strictly the published Schedule. Do not
- 4 **No Standing Rule**. When the vehicle is full, the driver has the authority to stop more passengers into the vehicle. Please wait for the
- 5 Please only wait at the **Assigned Points** for Pick-Up/Drop-Off. The drivers are instructed to comply with this requirement for safety
- 6 Passengers cannot demand the driver to **stop anywhere** according to their personal need or choice, unless for emergency reasons. The
- 7 Please clearly **indicate in advance** to the driver of your intended Drop-Off point. The driver reserves the right not to stop "at the last
- 8 Do not wait at road junctions, as it will endanger your life and the lives of others. Our bus/van will not stop there anyway.
- 9 Note that all buses are equipped with **CCTV camera and GPS**. Any passenger deemed by the driver to behave inappropriately will be

FEEDBACK & COMPLAINTS

If you have any feedback, suggestions or complaints about the Shuttle Bus or Van services, please communicate using any one of the following:

- A Email to SA Home Officer sahome@nottingham.edu.my
or SA International Officer international@nottingham.edu.my
- B Email to Ms. Nur Nazirah (CS Staff) transport@nottingham.edu.my
or Mr Law Kok Keong (CS Senior Manager) Kok-Keong.Law@nottingham.edu.my
- C Contact the Shuttle Bus company "TERUS MAJU" at **012-989 6137** for the following emergencies:
- If the bus has not arrived on time as scheduled (kindly consider the possibility of traffic/weather conditions)
 - if personal belongings are left behind in the bus.
 - If requesting bus driver to wait for delayed trains (**only for last trip at midnight**).
- D University Security 24 x 7 Emergency Phone Number: **+6 03 8924 8777**.
- E When reporting or providing feedback, kindly provide the following:
- Date & Time of incident
 - Description of incident... what happened, where, who, etc.
 - Bus Route Number
 - Description of Driver

SHUTTLE BUS & VAN SCHEDULE

ASSIGNED STOPPING POINTS

ROUTE #6 : Kajang KTM Station – Campus Route [IN]

(bus does not pass TTS)

IN (uses Silk Highway Exit 1804A merge onto Pintasan Kajang-Semenyih Bypass Road)		OUT (uses Semenyih – Pintasan Kajang-Semenyih Bypass Road)	
STOPPING POINTS	GPS COORDINATE	STOPPING POINTS	GPS COORDINATE
Kajang KTM Station ; Refer to 1a	Latitude: 2.985568 Longitude: 101.791313	UNMC – Block H1 (next to the Student Association building) ; Refer to 1b	Latitude: 2.943677 Longitude: 101.875867
Sunway Semenyih (main road - 50 metres on the left side from traffic light junction) ; Refer to 2a	Latitude: 2.960469 Longitude: 101.838617	Semenyih town (in front of Maybank) ; Refer to 2b	Latitude: 2.948225 Longitude: 101.846567
Semenyih Town (bus stop next to Chinese temple) ; Refer to 3a	Latitude: 2.948857 Longitude: 101.846545	Sunway Semenyih ; (Shell station) Refer to 3b	Latitude: 2.962711 Longitude: 101.836664
UNMC – Block H1 (next to the Association building) ; Refer to 4a	Latitude: 2.943677 Longitude: 101.875867	TESCO Extra Kajang Refer to 4b	Latitude: 3.005090 Longitude: 101.785463
		Kajang MRT Station Sg Jernih ; Refer to 5b	Latitude: 2.998594 Longitude: 101.78561239
		Kajang KTM Station ; Refer to 6b	Latitude: 2.985568 Longitude: 101.791313

SHUTTLE BUS & VAN SCHEDULE**ASSIGNED STOPPING POINTS**

UNMC – TTS - UNMC	
STOPPING POINTS	GPS COORDINATE
UNMC – Block H1 (next to the Student Association building) ; Refer to 1c	Latitude: 2.943677 Longitude: 101.875867
Tiara East Refer to 2c	Latitude: 2.947122 Longitude: 101.866297
Tetris Apartment Refer to 3c	Latitude: 2.946785 Longitude: 101.862032
Jalan TTS 2 & 3 ; Refer to 4c	Latitude: 2.947122 Longitude: 101.866297
Jalan TTS 4 ; Refer to 5c	Latitude: 2.949533 Longitude: 101.872852
Jalan TTS 7 ; Refer to 6c	Latitude: 2.954148 Longitude: 101.877809
Jalan TTS 6/10 ; Refer to 7c	Latitude: 2.95324 Longitude: 101.877288
Jalan TTS 6 ; Refer to 8c	Latitude: 2.951804 Longitude: 101.875684
Jalan TTS 5 ; Refer to 9c	Latitude: 2.950728 Longitude: 101.874483
Jalan TTS 5/2 ; Refer to 10c	Latitude: 2.949308 Longitude: 101.87282
UNMC – Block H1 (next to the Student Association building) ; Refer to 11c	Latitude: 2.943677 Longitude: 101.875867

Note: The number of trips (including to the mosque) might be revised from time to time over the Semester based on justified recommendation from the University Community and upon the approval of the University's management when necessary.

SHUTTLE BUS & VAN SCHEDULE

ASSIGNED STOPPING POINTS

1a



KAJANG KTM STATION
GOOGLE MAP COORDINATE
Latitude: 2.985568 ; Longitude: 101.791313

2a



**SUNWAY SEMENYIH (MAIN ROAD – 50 METRES ON THE LEFT SIDE
FROM TRAFFIC LIGHT JUNCTION)**
GOOGLE MAP COORDINATE

3a



BUS STOP NEXT TO CHINESE TEMPLE
GOOGLE MAP COORDINATE
Latitude: 2.948857 ; Longitude: 101.846545

4a



SA BUILDING
GOOGLE MAP COORDINATE
Latitude: 2.943677 ; Longitude: 101.875867

SHUTTLE BUS & VAN SCHEDULE

ASSIGNED STOPPING POINTS



1b

SA BUILDING
GOOGLE MAP COORDINATE
Latitude: 2.943677 ; Longitude: 101.875867



2b

SEMENYIH TOWN (IN FRONT OF MAYBANK)
GOOGLE COORDINATE MAP
Latitude: 2.948225 ; Longitude: 101.846567



3b

SUNWAY SEMENYIH (SHELL STATION)
GOOGLE COORDINATE MAP
Latitude: 2.962711 ; Longitude: 101.836664



4b

TESCO EXTRA KAJANG
GOOGLE COORDINATE MAP
Latitude: 3.005090 ; Longitude: 101.785463



5b

MRT STATION SG. JERNIH (SBK33)
GOOGLE MAP COORDINATE
Latitude: 2.998594 ; Longitude: 101.78561239



6b

KAJANG KTM STATION
GOOGLE MAP COORDINATE
Latitude: 2.985568 ; Longitude: 101.791313

SHUTTLE BUS & VAN SCHEDULE

ASSIGNED STOPPING POINTS



1c
SA BUILDING
GOOGLE MAP COORDINATE
Latitude: 2.943677 ; Longitude: 101.875867



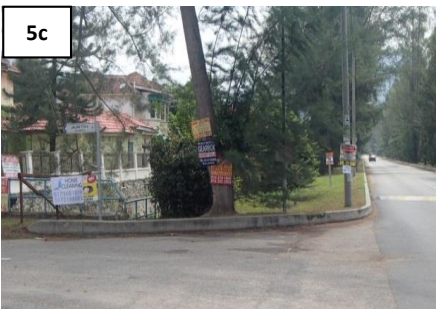
2c
TIARA EAST
GOOGLE MAP COORDINATE
Latitude: 2.948028 ; Longitude: 101.853125



3c
TETRIS APARTMENT
GOOGLE MAP COORDINATE
Latitude: 2.946785 ; Longitude: 101.862032



4c
JALAN TTS 2 & 3
GOOGLE MAP COORDINATE
Latitude: 2.947122 ; Longitude: 101.866297



5c
JALAN TTS 4
GOOGLE MAP COORDINATE
Latitude: 2.949533 ; Longitude: 101.872852



6c
JALAN TTS 7
GOOGLE MAP COORDINATE
Latitude: 2.954148 ; Longitude: 101.877809

SHUTTLE BUS & VAN SCHEDULE

ASSIGNED STOPPING POINTS



7c

JALAN TTS 6/10
GOOGLE MAP COORDINATE
Latitude: 2.95324 ; Longitude: 101.877288



8c

JALAN TTS 6
GOOGLE MAP COORDINATE
Latitude: 2.951804 ; Longitude: 101.875684



9c

JALAN TTS 5
GOOGLE MAP COORDINATE
Latitude: 2.950728 ; Longitude: 101.874483



10c

JALAN TTS 5/2
GOOGLE MAP COORDINATE
Latitude: 2.949308 ; Longitude: 101.87282



11c

SA BUILDING
GOOGLE MAP COORDINATE
Latitude: 2.943677 ; Longitude: 101.875867