

**Academic Year 2017-2018 (Updated as at 26th February 2018)**

<b># 5</b> Terus Maju	<b>OUT</b> campus to TBS (Ter. Bersepadu Selatan)	<b>IN</b> TBS (Ter. Bersepadu Selatan) to campus
Monday - Fridays Excluding Public Holidays  <u>Notes :</u> ** TBS trips shuttle bus will pass & stop via MRT Sg. Jernih station & Kajang KTM EXCEPT 6.15 pm trips to TBS only pass & stop via MRT Sg. Jernih station.	6:15 PM **	7:45 AM **

<b># 5</b> Terus Maju	<b>OUT</b> campus to TBS (Ter. Bersepadu Selatan)	<b>IN</b> TBS (Ter. Bersepadu Selatan) to campus
Saturday, Sunday and Public Holidays  <u>Notes :</u> ** TBS trips shuttle bus will pass via Kajang MRT station (Sg. Jernih).	(No Provisions)	(No Provisions)

All buses perform a one-way trip for each indicated departure time. Any changes or updates in the Shuttle Bus Schedule will be circulated via email and UNMC website.

**Academic Year 2017-2018 (Updated as at 26th February 2018)**

<b># 6</b>	<b>OUT</b>	<b>IN</b>
Terus Maju	campus to <b>KAJANG KTM STATION</b>	<b>KAJANG KTM STATION</b> to campus
Monday - Fridays Excluding Public Holidays  <u>Notes :</u> ** TBS trips shuttle bus will pass & stop via MRT Sg. Jernih station & Kajang KTM Station.  # TBS trips shuttle bus will pass & stop via MRT Sg. Jernih Station.  * Shuttle bus will pass & stop via MRT Sg. Jernih Station.	9:00 AM *      1:00 PM * 11:00 AM *      3:15 PM * 3:45 PM * 5:15 PM * 5:45 PM * <b>6:15 PM #</b> 7:15 PM * 7:45 PM * 9:15PM * 11:15PM *	8:00 AM      12:15 PM 8:15 AM      2:15 PM <b>8:30 AM **</b> 2:30 PM 10:15 AM      4:30 PM 5:00 PM 6:30 PM 7:00 PM 8:30 PM 10:30 PM

<b># 6</b>	<b>OUT</b>	<b>IN</b>
Terus Maju	campus to <b>KAJANG KTM STATION</b>	<b>KAJANG KTM STATION</b> to campus
Saturday, Sunday and Public Holidays  <u>Notes :</u> * Shuttle bus will pass & stop via MRT Sg. Jernih Station.	7:30 AM *      12:30 NN * 9:30 AM *      2:30 PM * 11:30 AM *      3:30 PM * 4:30 PM * 5:30 PM * 6:30 PM * 8:30 PM * 10:30PM *	8:15 AM      2:30 PM 10:30 AM      3:15 PM 11:30 AM      4:30 PM 12:30 NN      5:15 PM 7:30 PM 9:30 PM 11:30 PM

All buses perform a one-way trip for each indicated departure time. Any changes or updates in the Shuttle Bus Schedule will be circulated via email and UNMC website.

**Academic Year 2017-2018 (Updated as at 26th February 2018)**

# 7 Terus Maju / Van	OUT		IN	
	campus to TTS (Taman Tasik Semenyih)		TTS (Taman Tasik Semenyih) to campus	
Monday - Fridays	8:00 AM @Van	12:30 PM @Van	8:10 AM @Van	12:40 PM @Van
Excluding	8:35 AM @Van	2:30 PM @Van	8:35 AM @	2:40 PM @Van
Public Holidays	9:30 AM @Van	3:00 PM @Van	8:45 AM @Van	3:10 PM @Van
	10:30AM @Van	4:00 PM @Van	9:40 AM @Van	4:10 PM @Van
<u>Notes :</u>	11:30 AM @Van	5:00 PM @Van	10:40AM @Van	5:10 PM @Van
Van = UNMC Van	12:00 NN @Van	6:00 PM @Van	11:40 AM @Van	6:10 PM @Van
(WYE8207)		6:30 PM @Van	12:10 NN @Van	6:40 PM @Van
		7:00 PM @Van		7:10 PM @Van
		8:00 PM @		
Trips marked with "@"		10:00 PM @		
will pass Tiara East &		12:00 MN @		
Tetris Apartment				

# 7 Terus Maju	OUT		IN	
	campus to TTS (Taman Tasik Semenyih)		TTS (Taman Tasik Semenyih) to campus	
Saturday, Sunday and		1:00 PM @	10:30 AM @	1:30 PM
Public Holidays		4:00 PM		4:30 PM
		7:00 PM @		7:30 PM
<u>Notes :</u>		10:00 PM @		
Trips marked with "@"				
will pass Tiara East &				
Tetris Apartment				

All buses perform a one-way trip for each indicated departure time. Any changes or updates in the Shuttle Bus Schedule will be circulated via email and UNMC website.

**Academic Year 2017-2018 (Updated as at 26th February 2018)**

# 8 Terus Maju	OUT		IN	
	campus to Tesco Semenyih		Tesco Semenyih to campus	
Monday to Friday Excluding Public Holidays		6.45 PM 7:00 PM		9:00 PM 11:00 PM
Notes : Express direct service (point to point only)				

# 8 Terus Maju	OUT		IN	
	campus to Tesco Semenyih		Tesco Semenyih to campus	
Saturday, Sunday and Public Holidays	11:00 AM	2:00 PM 5:00 PM 8:00 PM		12:00 NN 3:00 PM 6:00 PM 9:00 PM
Notes : Express direct service (point to point only)				

All buses perform a one-way trip for each indicated departure time. Any changes or updates in the Shuttle Bus Schedule will be circulated via email and UNMC website.

**Academic Year 2017-2018 (Updated as at 26th February 2018)**

# 9 Terus Maju	OUT	IN
	campus to Al-Ittihad Mosque, TTS campus to PGA Semenyih Pelangi Mosque	Al-Ittihad Mosque, TTS to campus PGA Semenyih Pelangi Mosque to campus
Fridays Only (6 Express Buses)	12:45 NN 1:00 PM 1:15 PM  Pick-Up point at UNMC Islamic Centre	2:00 PM  Immediately depart from mosque after prayers

# 10 Terus Maju	OUT	IN
	campus to KLTC (KL Teaching Centre)	KLTC (KL Teaching Centre) to campus
Monday - Fridays Excluding Public Holidays  Notes : Express direct service (point to point only)	8:00 AM Van      4:00 PM	10:00 AM Van      9:45 PM

# 10 Terus Maju	OUT	IN
	campus to KLTC (KL Teaching Centre)	KLTC (KL Teaching Centre) to campus
Saturday, Sunday and Public Holidays  Notes : Express direct service (point to point only)	8:00 AM      12:00 NN 4:00 PM	2:00 PM 6:00 PM 10:00 PM

All buses perform a one-way trip for each indicated departure time. Any changes or updates in the Shuttle Bus Schedule will be circulated via email and UNMC website.

## ASSIGNED STOPPING POINTS

### ROUTE #6 : Campus – Kajang KTM Station Route [OUT]

### ROUTE #6 : Kajang KTM Station – Campus Route [IN]

(bus does not pass TTS)

IN (uses Silk Highway Exit 1804A merge onto Pintasan Kajang-Semenyih Bypass Road)		OUT (uses Semenyih – Pintasan Kajang-Semenyih Bypass Road)	
STOPPING POINTS	GPS COORDINATE	STOPPING POINTS	GPS COORDINATE
Kajang KTM Station ; <b>Refer to 1a</b>	Latitude: 2.985568 Longitude: 101.791313	UNMC – Block H1 (next to the Student Association building) ; <b>Refer to 1b</b>	Latitude: 2.943677 Longitude: 101.875867
Sunway Semenyih (main road - 50 metres on the left side from traffic light junction) ; <b>Refer to 2a</b>	Latitude: 2.960469 Longitude: 101.838617	Semenyih town (in front of Maybank) ; <b>Refer to 2b</b>	Latitude: 2.948225 Longitude: 101.846567
Semenyih Town (bus stop next to <b>Chinese temple</b> ) ; <b>Refer to 3a</b>	Latitude: 2.948857 Longitude: 101.846545	Sunway Semenyih ; <b>(Shell station) Refer to 3b</b>	Latitude: 2.962711 Longitude: 101.836664
UNMC – Block H1 (next to the Student Association building) ; <b>Refer to 4a</b>	Latitude: 2.943677 Longitude: 101.875867	TESCO Extra Kajang <b>Refer to 4b</b>	Latitude: 3.005090 Longitude: 101.785463
		Kajang MRT Station Sg Jernih <b>Refer to 5b</b>	Latitude: 2.998594 Longitude: 101.78561239
		Kajang KTM Station ; <b>Refer to 6b</b>	Latitude: 2.985568 Longitude: 101.791313

## ASSIGNED STOPPING POINTS



University of  
Nottingham  
UK | CHINA | MALAYSIA

### ROUTE #7 : Campus - Taman Tasik Semenyih [TTS Route] - Campus

UNMC – TTS - UNMC	
STOPPING POINTS	GPS COORDINATE
UNMC – Block H1 (next to the Student Association building) ; <b>Refer to 1c</b>	<b>Latitude:</b> 2.943677 <b>Longitude:</b> 101.875867
Tiara East <b>Refer to 2c</b>	<b>Latitude:</b> 2.947122 <b>Longitude:</b> 101.866297
Tetris Apartment <b>Refer to 3c</b>	<b>Latitude:</b> 2.946785 <b>Longitude:</b> 101.862032
Jalan TTS 2 & 3 ; <b>Refer to 4c</b>	<b>Latitude:</b> 2.947122 <b>Longitude:</b> 101.866297
Jalan TTS 4 ; <b>Refer to 5c</b>	<b>Latitude:</b> 2.949533 <b>Longitude:</b> 101.872852
Jalan TTS 7 ; <b>Refer to 6c</b>	<b>Latitude:</b> 2.954148 <b>Longitude:</b> 101.877809
Jalan TTS 6/10 ; <b>Refer to 7c</b>	<b>Latitude:</b> 2.95324 <b>Longitude:</b> 101.877288
Jalan TTS 6 ; <b>Refer to 8c</b>	<b>Latitude:</b> 2.951804 <b>Longitude:</b> 101.875684
Jalan TTS 5 ; <b>Refer to 9c</b>	<b>Latitude:</b> 2.950728 <b>Longitude:</b> 101.874483
Jalan TTS 5/2 ; <b>Refer to 10c</b>	<b>Latitude:</b> 2.949308 <b>Longitude:</b> 101.87282
UNMC – Block H1 (next to the Student Association building) ; <b>Refer to 11c</b>	<b>Latitude:</b> 2.943677 <b>Longitude:</b> 101.875867

**Note:** The number of trips (including to the mosque) might be revised from time to time over the Semester based on justified recommendation from the University Community and upon the approval of the University's management when necessary.

**ASSIGNED STOPPING POINTS**

**ROUTE #6 : KAJANG KTM STATION to UNMC (In) Assigned Stopping Points**



1a

**KAJANG KTM STATION**  
**GOOGLE MAP COORDINATE**  
Latitude: 2.985568 ; Longitude: 101.791313



2a

**SUNWAY SEMENYIH (MAIN ROAD – 50 METRES ON THE LEFT SIDE FROM TRAFFIC LIGHT JUNCTION )**  
**GOOGLE MAP COORDINATE**



3a

**BUS STOP NEXT TO CHINESE TEMPLE**  
**GOOGLE MAP COORDINATE**  
Latitude: 2.948857 ; Longitude: 101.846545



4a

**SA BUILDING**  
**GOOGLE MAP COORDINATE**  
Latitude: 2.943677 ; Longitude: 101.875867



**ASSIGNED STOPPING POINTS**

**ROUTE #6 : UNMC to KAJANG KTM Station (Out) Assigned Stopping Points**



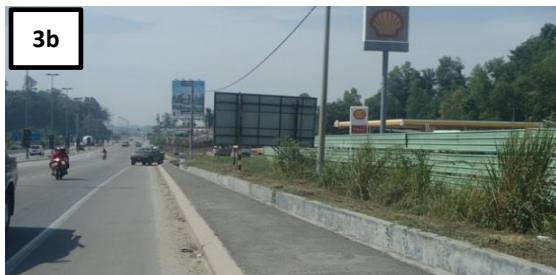
1b

**SA BUILDING**  
GOOGLE MAP COORDINATE  
Latitude: 2.943677 ; Longitude: 101.875867



2b

**SEMENYIH TOWN (IN FRONT OF MAYBANK)**  
GOOGLE COORDINATE MAP  
Latitude: 2.948225 ; Longitude: 101.846567



3b

**SUNWAY SEMENYIH ( SHELL STATION)**  
GOOGLE COORDINATE MAP  
Latitude: 2.962711 ; Longitude: 101.836664



4b

**TESCO EXTRA KAJANG**  
GOOGLE COORDINATE MAP  
Latitude: 3.005090 ; Longitude: 101.785463



5b

**MRT STATION SG. JERNIH (SBK33)**  
GOOGLE MAP COORDINATE  
Latitude: 2.998594 ; Longitude: 101.78561239



6b

**KAJANG KTM STATION**  
GOOGLE MAP COORDINATE  
Latitude: 2.985568 ; Longitude: 101.791313

**ROUTE #7 : Taman Tasik Semenyih Route Assigned Stopping Point**



**1c**  
**SA BUILDING**  
**GOOGLE MAP COORDINATE**  
Latitude: 2.943677 ; Longitude: 101.875867



**2c**  
**TIARA EAST**  
**GOOGLE MAP COORDINATE**  
Latitude: 2.948028 ; Longitude: 101.853125



**3c**  
**TETRIS APARTMENT**  
**GOOGLE MAP COORDINATE**  
Latitude: 2.946785 ; Longitude: 101.862032



**4c**  
**JALAN TTS 2 & 3**  
**GOOGLE MAP COORDINATE**  
Latitude: 2.947122 ; Longitude: 101.866297



**5c**  
**JALAN TTS 4**  
**GOOGLE MAP COORDINATE**  
Latitude: 2.949533 ; Longitude: 101.872852



**6c**  
**JALAN TTS 7**  
**GOOGLE MAP COORDINATE**  
Latitude: 2.954148 ; Longitude: 101.877809



**ROUTE #7 : Taman Tasik Semenyih Route Assigned Stopping Point**



7c

**JALAN TTS 6/10**  
**GOOGLE MAP COORDINATE**  
Latitude: 2.95324 ; Longitude: 101.877288



8c

**JALAN TTS 6**  
**GOOGLE MAP COORDINATE**  
Latitude: 2.951804 ; Longitude: 101.875684



9c

**JALAN TTS 5**  
**GOOGLE MAP COORDINATE**  
Latitude: 2.950728 ; Longitude: 101.874483



10c

**JALAN TTS 5/2**  
**GOOGLE MAP COORDINATE**  
Latitude: 2.949308 ; Longitude: 101.87282



11c

**SA BUILDING**  
**GOOGLE MAP COORDINATE**  
Latitude: 2.943677 ; Longitude: 101.875867

## SOME CALL TAXI SUPPLIERS' CONTACTS

Semenyih Sentral Taxi Station (6am -10pm) (opposite Al-Shad Restaurant)

**Phone: 03-8724 0315**

Kajang Taxi Station (6am – 11pm)

**Phone: 03-8736 9585**

Airport Limo & Taxi Service

**Phone: 03-9223 8080, 03-9223 8949 (Booking Centre)**

Public Cab (24 hours)

**Phone: 03-6259 2020**

**To KLIA Phone: 03-6259 1913**

UpTown Ace SuperCab (Yellow Cab)

**Phone: 03-9283 2333**

Sunlight Radio Taxi

**Phone: 603-9057 5757, 9057 1111**

Radio Taxi

**Phone: 03-9221 7600**

**Disclaimer:** The University of Nottingham Malaysia Campus (UNMC) is not endorsing any of these taxi suppliers but these are given for the benefit of students who are not familiar with taxi companies around here. **Take note:** UNMC is not responsible for any negotiations of taxi fare charges between the students and the supplier of any of the taxi providers solicited by the students. It is the responsibility of every student to be aware of the terms and legal matters of the business deals that is accepted in exchange for cash. You are advised to find out the taxi fare on the phone before an agreement is made.

### UNMC ID REQUIREMENTS

Upon boarding the shuttle buses, the university management requires all university bus passengers to:

Show their UNMC ID card to the bus drivers. This is **important** to enable the drivers to identify you as a UNMC student or staff and to prevent unauthorized passengers from boarding the buses for the safety/security of all university passengers.

**University bus passengers, both student and staff who do not have their UNMC ID card will be DENIED from using the shuttle bus service**

### SAFETY / TRAFFIC REGULATION / GENERAL CONCERNS

**The points below are important for all university bus passengers to follow, for the benefit of all parties involved in the shuttle bus service, may it be the bus drivers or you as the passenger. Everyone's cooperation will effectively make each journey a more comfortable one.**

- Please only wait at assigned pick-up/drop-off points. Bus drivers have been instructed to pick-up and drop-off passengers at assigned stops only. This is important for safety reasons and also that the drivers follow the traffic laws. However, the drivers upon their discretion may drop-off or pick-up passengers at unassigned stops only if there is an emergency need to do so, or when it's raining heavily; as long as it does not endanger the lives of others and themselves.
- Passengers have no right to demand the bus drivers to stop according to their personal needs, unless it's an emergency.
- Please **clearly indicate or inform** the bus driver in advance whenever you want to be dropped-off or picked-up from an assigned stopping point.
- Do not wait at road junctions as it will endanger your lives and also the lives of others.
- Board the buses **early** and do not wait for it to move then decide to **run** after it or **demand** the bus drivers to wait for you or your peers. Actions like these will not be tolerated as the shuttle bus service is provided for all university students and staff and not as a private vehicle for a few.
- **No Standing Rule** - When the buses are full (44-passengers), please wait for the next bus or a back-up bus and cooperate with the bus driver by following his instructions. **Back-up buses will take some time to arrive, so please be patient.**

Any university bus passenger found to have disrupted the journey of shuttle bus service and/or endangered the lives of other students and staff by their undisciplined or rebellious / reckless behavior will be accountable to the university management.

### FEEDBACK ON THE SHUTTLE BUS SERVICE

Should you have any grievances, comments, feel-good remarks, or perhaps something you would like to suggest concerning the bus service, please **email** to SA Home Officer at [sahome@nottingham.edu.my](mailto:sahome@nottingham.edu.my) or SA International Officer at [sa\\_international@nottingham.edu.my](mailto:sa_international@nottingham.edu.my) or Mr. Mazlan (CSO Staff) at [transport@nottingham.edu.my](mailto:transport@nottingham.edu.my) or to Mr. Law Kok Keong (CSO Manager) at [Kok-Keong.Law@nottingham.edu.my](mailto:Kok-Keong.Law@nottingham.edu.my). **No verbal complaints will be entertained.** Any complaints regarding a particular journey should include the following details with a descriptive report on what took place and **be submitted within 72 hours after the incident.** Late complaints will not be entertained as it would be difficult to trace back what took place.

1) Date                      2) Time                      3) Bus plate Number (description of the driver)                      4) what route 5) Area of Incident

**Remember that action can only be taken when we receive written feedback that contains relevant information!**

### EMERGENCY CONTACTS OF TERUS MAJU

Terus Maju                      012-9896137

Only call when there is an emergency (especially regarding the situations below) and they will communicate immediately with the drivers responsible.

- IF the shuttle bus has not arrived according to the time table
- IF personal belongings are left behind in the buses
- IF requesting bus drivers to wait for delayed trains - **only for the last trip on midnight**

**Reminder: Emergency number from external line to campus security: 03-8924 8777**

# Campus map



**University of Nottingham**  
UK | CHINA | MALAYSIA

- |   |                |                         |          |                                 |         |
|---|----------------|-------------------------|----------|---------------------------------|---------|
| Central Administration                        | Block A        | On campus accommodation | Block I1 | Sports Complex                  | Block K |
| Faculty of Science and Faculty of Engineering | Block B and B1 | Toman Hall              | Block I2 | (The Y.M. Tengku Tan Sri Dato') | Block M |
| Faculty of Engineering and Faculty of Science | Block C and C1 | Langlese Hall           | Block I3 | Self-Admin (Rahauddeen)         | Block N |
| Faculty of Engineering                        | Block D        | Riding Hall             | Block I4 | Islamic Centre                  |         |
| Faculty of Arts and Social Sciences           | Block E        | Pinglor Hall            | Block I5 | Engineering Research Building   |         |
| Central Teaching 1                            | Block F1       | Kasas Hall              | Block J1 | Guard House 1                   |         |
| Information Services - IT Support             | Block F2       | Sipadan Hall            | Block J2 | Guard House 2                   |         |
| Central Teaching 2                            | Block F3       | Mabul Hall              | Block J3 | Guard House 3                   |         |
| Library                                       | Block G        | Larwayan Hall           | Block J4 |                                 |         |
| Student Association                           | Block H and H1 | Rawa Hall               | Block J5 |                                 |         |
| (The Professor Daulk                          |                | Gema Hall               | Block J6 |                                 |         |
| Sir Colin Campbell Building)                  |                | Perhentian Hall         |          |                                 |         |
| Central Teaching 3                            | Block F4       |                         |          |                                 |         |



**SA BUILDING, BLOCK H1**  
**GOOGLE MAP COORDINATE**  
Latitude: 2.943677  
Longitude: 101.875867