



The University of  
**Nottingham**

UNITED KINGDOM • CHINA • MALAYSIA



**Welcome to the  
School of Computer Science**

Dr. Tomas Maul  
University of Nottingham  
School of Computer Science

# School of Computer Science

UG/PG

- SCS at UNMC
- Founded in 2000
- 12 academic staff
- About 250 students
- Leading Malaysian research school
- Very closely integrated with SCS in Nottingham UK





# School of Computer Science

UG/PG

- SCS in UK
- Founded in 1986
- 43 academic staff & 32 research fellows
- About 700 students
- Leading UK research school
  - 2014 REF - top 10 UK Computer Science departments
  - 88% of research is at international level
- Head of School  
Professor Jon Garibaldi
- Study abroad (exchange) programme



# SCS Staff

UG/PG



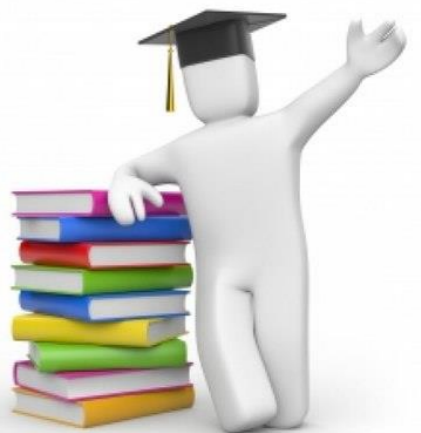
Have a look at our [people page](#).

- Dr. Amr Ahmed  
(Head of School)
- Mr. Michael Chung  
(Deputy Head of School)
- Mr. K.R. Selvaraj  
(Senior Tutor)
- Dr. ZhiYuan Chen  
(Industry Liaison)
- Mr. Sze-Ker Chew  
(UG Examination Officer)
- Dr. Siang-Yew Chong  
(PG Director)
- Dr. Tomas Maul  
(Research Director)
- Dr. Marina Ng  
(Marketing Director)
- Dr. Siew Chin Neoh  
(Disability Liaison)
- Dr. Iman Liao  
(PG Examination Officer)
- Professor Graham Kendall  
(CEO)

# Undergraduate Courses/Programmes

UG

- BSc Computer Science
- BSc Software Engineering
- BSc Computer Science with Artificial Intelligence



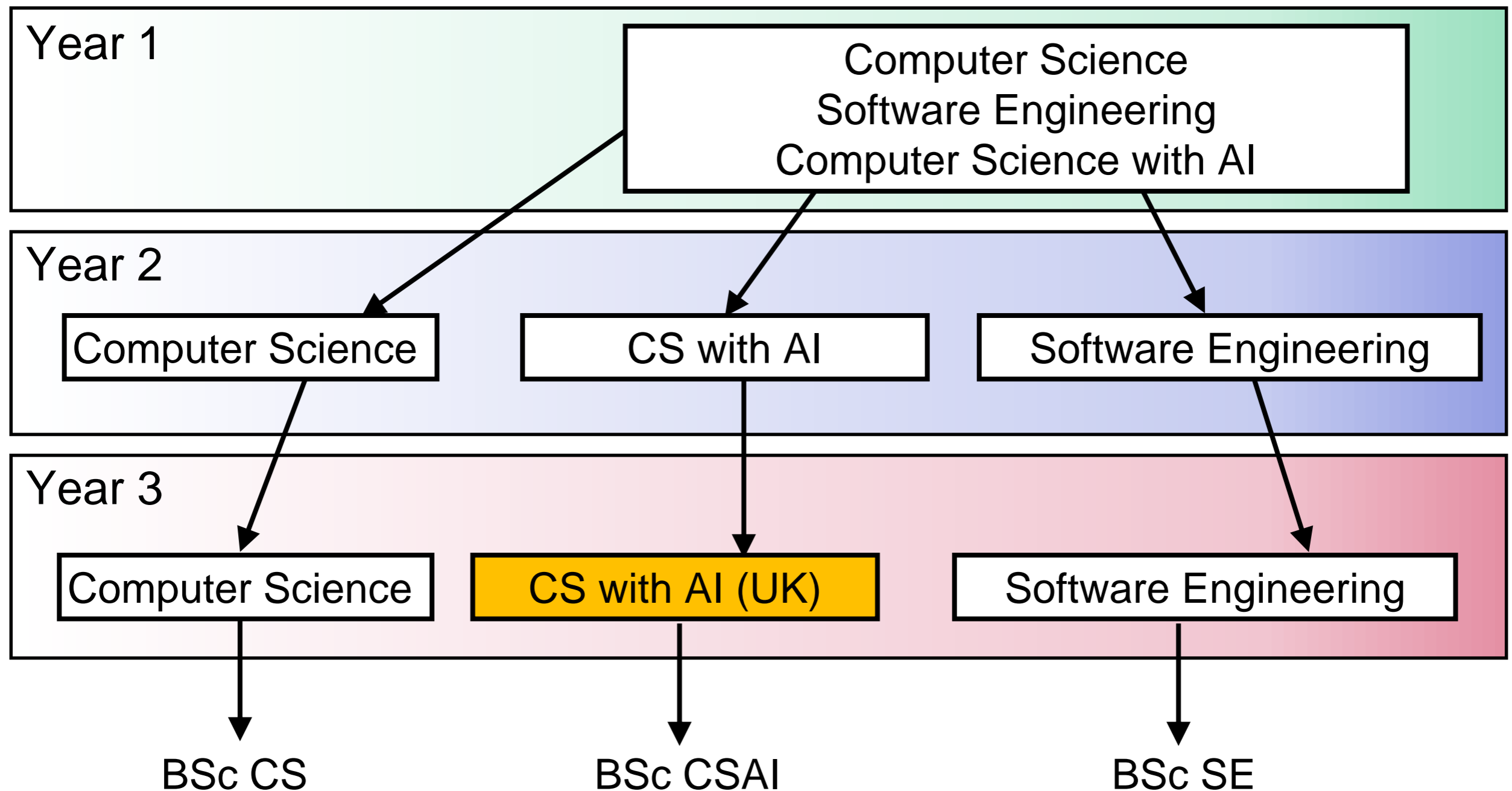


# UG Course/Programme Structure

UG

Changing courses/programmes :

- Generally speaking, you can change courses/programmes at the end of the first year.
- Sometimes it is possible to change courses/programmes at the end of the 2<sup>nd</sup> year, but this depends on many factors. Case by case. Changing this late is often not possible.
- If international students change course they need to re-apply for a new Visa Approval Letter (VAL).



# Postgraduate Programmes

PG

- MSc in Computer Science
- Mphil in Computer Science
- PhD in Computer Science



# MSc Programme Structure

## ***Compulsory***

Students must take all modules in this group:

Code	Title	Credits
G54REM	Research Methods	20

## ***Restricted***

### ***Group 1***

Students must take 60 credits from this group.

Code	Title	Credits
G54PRO	Research Project in Computer Science	60
G54PAI	Research Project in Computer Science (Artificial Intelligence)	60
Credit Total		120

### ***Group 2***

Students must take a maximum of 100 credits from this group.

Code	Title	Credits
G54AAD	Advanced Algorithms and Data Structures	10
G54PAD	Project in Advanced Algorithms and Data Structures	10
G54ARS	Autonomous Robotic Systems	20
G54LDO	Linear and Discrete Optimization	20
G53ETH	Professional Ethics in CS	10
G53MDP	Mobile Device Programming	10
G53MLE	Machine Learning	20
G53SQM	Software Quality Assurance	10
G54SOD	Simulation and Optimisation for Decision Support	20
G54SPM	Software Engineering Management	20
G53FIV	Fundamentals of Information Visualisation	10
G53SEC	Security	10
G52IHC	Introduction to HCI	10
G52IIP	Introduction to Image Processing	10

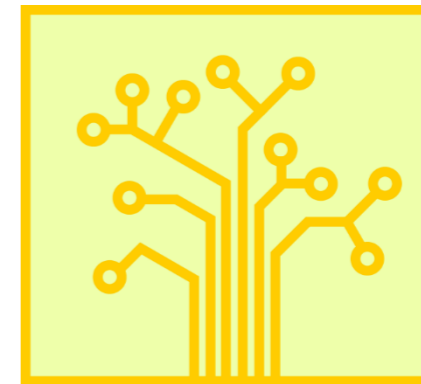


Image by Nevit Dilmen

### **Additional Module Choice Information for PG I**

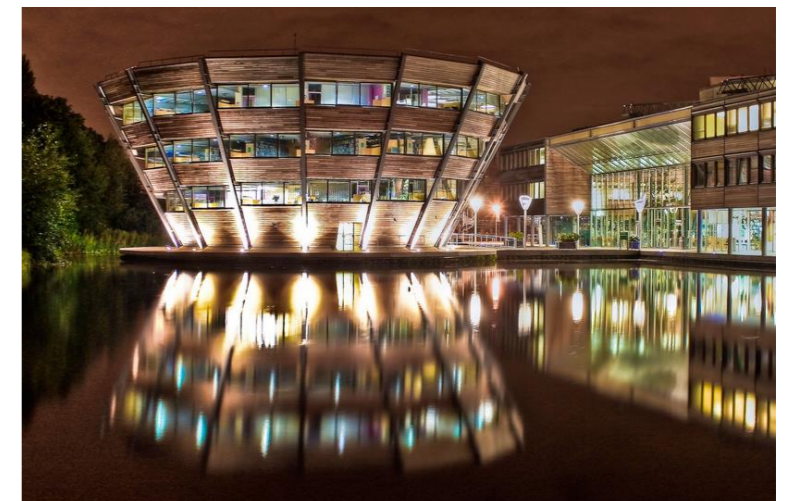
Students need to take 180 credits with at least 150 credits at level 4. Students must take a minimum of 140 Computer Science credits.



# Study Abroad Programme

UG

- Spend a full year in UK
- Must be second year
- Must return to UNMC for third year
- Malaysia fees still apply  
(Not Computer Science with AI)
- Capped at 5. Competitive.



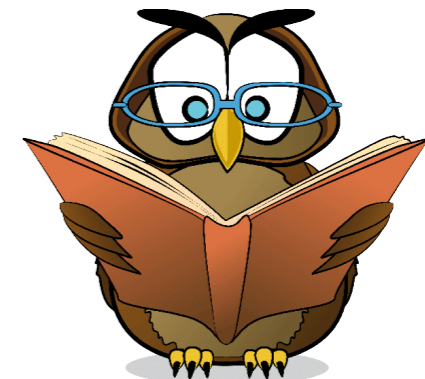
# Credits and Modules/Courses

UG/PG

Some terminology from our [Quality Manual](#).

- **Modules/Courses are teaching units**
  - Compulsory or optional
  - Compensatable or non-compensatable
  - Pre or co-requisites
- **Modules/Courses are worth credits**
  - Credits are a notional unit of study time
  - Mostly 10, some 20, projects may be 40
  - BSc (honours) - 120 credits per year
  - MSc – 180 credits
- **Module/Course activities**
  - Lectures / E-learning
  - Labs
  - Tutorials

[1 credit](#) corresponds notionally to about 10 hours of work



UG/PG

# Online Information

- Moodle

<http://moodle.nottingham.ac.uk>

- MyNottingham

<https://mynottingham.nottingham.ac.uk>

- Quality Manual

<http://www.nottingham.ac.uk/academicservices/qualitymanual/>

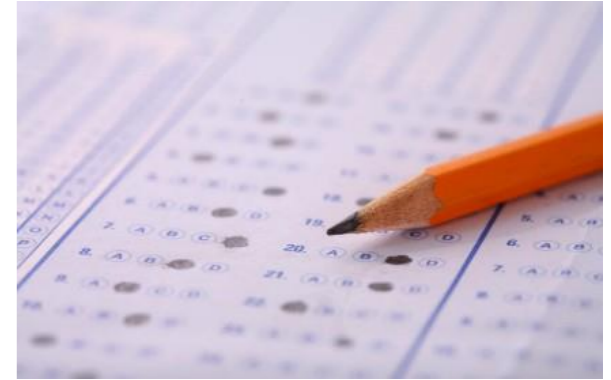
- Current Students Page

<http://www.nottingham.edu.my/ComputerScience/Current/StudentDocuments.aspx>



UG/PG

# Assessment



- All modules/courses are assessed
- Exams and/or coursework
  - Exams at end of each semester
  - Coursework deadlines vary per module/course
  - Weightings vary
- Coursework
  - Electronic (through Moodle)
  - Paper (faculty office - get a receipt)
  - Mark penalties for late submission
- Compensation and Resits



# Support

UG/PG

- School
  - Personal tutor
  - Senior tutor (Selvaraj)
  - Learning Community Forum (student representatives)
  - Coursework and exam feedback (module/course convenors)
  - Deputy Head of School (Michael Chung)
  - Head of School (Amr Ahmed)
  - Disability support officer (Siew Chin Neoh)
  - UG and PG Course Directors.
- How to get meetings with staff
- University
  - Counselling service
  - Careers Advisory Office



# Problems and Issues

- Changing Optional Modules/Courses

- Must be done in the first two weeks of the semester
- Your responsibility to make up missed lectures

UG/PG

- Changing Courses/Programmes

- Do it as early as possible
- Talk to your personal tutor
- If other schools are involved talk to both schools

UG

- University

- Counseling Service
- Careers Advisory Office
- Student Services
- Accommodation Office

UG/PG



# Attendance



UG/PG • Lectures, Labs and Tutorials are NOT OPTIONAL

UG/PG • You must attend. Attendance is compulsory and recorded.

UG/PG • International students must attend - otherwise you risk getting your student visa withdrawn

UG • The first year is called the “Qualifying Year”

UG • You must qualify - otherwise you will be terminated! Can be terminated in other years too.

# Illness and Other Issues

UG/PG

- **Extenuating Circumstances**
  - Illness or other circumstances outside of your control
  - **TELL US!**
  - **Extenuating Circumstances Form (ECF).**
  - Tutor and module/course convenors of affected modules/courses
  - If appropriate talk to disability support officer
  - If appropriate talk to trained counsellors





# Useful Web Page

UG/PG

<http://www.nottingham.edu.my/ComputerScience/Current/StudentDocuments.aspx>

The screenshot shows the website for the University of Nottingham Malaysia, specifically the School of Computer Science. The page is titled "School of Computer Science" and is part of the "Current students" section. The navigation menu includes "Study", "Student life", "Schools and departments", "Research and business", "Alumni", and "About". A search bar is present with the text "Enter Keywords". The breadcrumb trail reads "University of Nottingham, Malaysia > School of Computer Science > Current students". The main content area is divided into a left sidebar and a main content area. The sidebar contains links for "Home", "About the School", "Student experience", "Courses", "Research", "Current students" (highlighted), "People", and "Make an enquiry". The main content area is titled "Student Information" and contains the following sections:

- Information for 2016-2017**
- General Information for all Computer Science Students**
  - View [key academic dates](#) and [teaching timetables](#).
  - View [Course Structures](#).
  - View [Module Catalogue](#).
  - Read several notes and pointers on [avoiding plagiarism](#).
  - Download [LCF Minutes](#).
  - For industry related information, please contact [Dr Chen Zhiyuan](#).
- Induction Package**
- Presentation Slides**
  - Download [HoS welcome](#).
  - Download [course/module information slides](#) by Mr. Ho.
  - Download [notes](#) for new students.
- Handbooks**
  - Download [undergraduate student handbook](#).
  - Download [undergraduate module descriptions](#).

Social media icons for LinkedIn, Facebook, Twitter, Email, and Print are located in the top right corner of the main content area.

# Tips to do well (1)

UG/PG

- Expect your programme to be tough and plan accordingly
- Turn up to lectures and labs
- Be punctual for lectures
- Check your e-mail daily
- Don't leave things until the last minute



UG/PG

# Tips to do well (2)



- Plan your time according to the number of credits a piece of work is worth
- If you don't understand something in a module/course - ask the module/course convenor
- If you are feeling generally lost – talk to your tutor; they can give general academic advice
- Get to know the staff and students in other years and on other courses/programmes

# Tips to do well (3)

UG/PG

- Take advantage of University facilities
- Cultivate a sensible work/life balance
- Have fun!





# Student Data Capture (SDC) e-form

Student Data Capture (SDC) e-form consists of three sections.

Please complete all sections (about 10 minutes).

Questions?

UG/PG

