

INDUCTION *April 2026*

Nottingham's Foundation Programme (NFP)
Day 1: April 15, 2026 (Wednesday)

Central Administration Induction

WELCOME TO NOTTINGHAM MALAYSIA

9.30am - 10.15am

Venue: Great Hall, Block A

Join us for a day of connection and celebration, including:

- Welcome from our Provost and CEO
- A friendly hello from your Students' Association
- Key advice on safety, and campus services

BREAK

10.15am - 10.30am

ICE BREAKING SESSION

10.30am - 12.00pm

Venue: Sports Complex, Block K

Break the ice and spark new friendships through fun activities and friendly challenges in this session led by the Students' Association.

Attire: Sportswear or any comfy outfit – be ready for some active fun!

LUNCH

12.00pm - 1.30pm

VISA AND SUPPORT

1.30pm - 2.30pm

Venue: F1A11, Block F1

For international students only

Meet the people who'll guide you through visa and immigration matters, and discover the support available for international students.

BREAK

2.30pm - 2.45pm

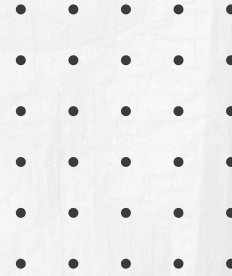
ON CAMPUS ACCOMMODATION

2.45pm - 3.15pm

Venue: F1A13, Block F1

For students living on campus

Learn everything you need to know about living on campus and meet the team who'll help you feel at home.



Note:

If you have **not completed your registration** yet, you may do so at the **Great Hall, Block A (Trent Building)**, between **2.00 PM and 5.00 PM**.

You are welcome to **attend the induction programme first** and **complete your registration later** within this time window.

Visit the **Help Desk at Block F1** if you require any assistance.



[Campus Map](#)



[Virtual Tour](#)



INDUCTION *April 2026*

Nottingham's Foundation Programme (NFP)
Day 2: April 16, 2026 (Thursday)

Programme and Learning Support Induction

WELCOME SESSION

by Students' Association

9.30am - 9.45am

Venue: Great Hall, Block A

WELCOME AND INTRODUCTION TO NOTTINGHAM'S FOUNDATION PROGRAMME

by Ms. Dorcas Lam, Programme Director,
Foundation Programme Office

9.45am - 10.15am

Venue: Great Hall, Block A

GETTING ONLINE AND INTO MOODLE

by IT Services Team

10.15am - 11.15am

Venue: Great Hall, Block A

LIBRARY TOUR

by Reference & User Education Team, Library

11.15am - 12.15pm

Venue: Library, Block G

LUNCH

12.15pm - 1.15pm

WELLBEING AND LEARNING SUPPORT

by Wellbeing & Learning Team

1.15pm - 1.30pm

Venue: Great Hall, Block A

TIME MANAGEMENT AND RESPONSIBILITIES

by Ms. Jane Davies, Senior Tutor,
Foundation Programme Office

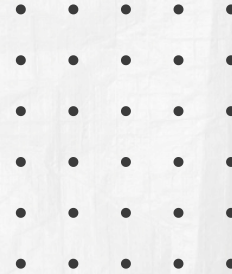
1.30pm - 2.00pm

Venue: Great Hall, Block A

PEER-TO-PEER MENTORING (P2P)

2.00pm - 2.30pm

Venue: Great Hall, Block A



BREAK

2.30pm - 3.00pm

NFP PEER IMMERSION SESSION

3.00pm - 5.00pm

Venue: Great Hall, Block A

Visit the **Help Desk at Block F1** if you require any assistance.



[Campus Map](#)



[Virtual Tour](#)



INDUCTION *April 2026*

Nottingham's Foundation Programme (NFP)
Day 3: April 17, 2026 (Friday)

Programme and Learning Support Induction

INTRODUCTION TO THE FACULTY OF ARTS AND SOCIAL SCIENCES

by Professor Joanne Lim, Dean of the Faculty of Arts and Social Sciences

9.30am - 10.00am

Venue: Great Hall, Block A

INTRODUCTION TO THE FACULTY OF SCIENCE AND ENGINEERING

by Professor Steve Janssen, Dean of the Faculty of Science and Engineering

10.00am - 10.30am

Venue: Great Hall, Block A

STUDENT EDUCATION NETWORK

by Leo Raymond, SA Education Officer

10.30am - 11.00am

Venue: Great Hall, Block A

NFP TUTORING SYSTEM

by Ms. Jane Davies, Senior Tutor, Foundation Programme Office

11.00am - 11.30am

Venue: Great Hall, Block A

NAVIGATING THE LEARNING PLATFORMS

by the Foundation Student Support team, Foundation Programme Office

11.30am - 12.30pm

Venue: Great Hall, Block A

LUNCH & FRIDAY PRAYER

12.30pm - 2.30pm

CHOOSING YOUR ELECTIVES

by Academic Guides

2.30pm - 3.30pm

Venue: refer to TABLE 1*

BREAK

3.30pm - 3.45pm

MANAGING ATTENDANCE

by the Foundation Student Support team, Foundation Programme Office

3.45pm - 4.15pm

Venue: Great Hall, Block A

LAB SAFETY BRIEFING

by the Lab Manager

4.15pm - 5.15pm

Venue: Great Hall, Block A



* TABLE 1

Departments / Schools

- Chemical and Environmental Engineering - F1A03, Block F1
- Civil Engineering - F1A09, Block F1
- Electrical and Electronic Engineering - F1A11, Block F1
- Mechanical, Materials and Manufacturing Engineering - EA29, Block E
- Nottingham University Business School - F3A08, Block F3
- Biological and Environmental Sciences - BA 07, Block B
- Computer and Mathematical Sciences - F1A02, Block F1
- Education - F3C06, Block F3
- Humanities - EA51, Block E
- Pharmacy - F1A23, Block F1
- Politics, International Relations and Economics - F3A03, Block F3
- Psychology - F1A22, Block F1

Visit the **Help Desk** at **Block F1** if you require any assistance.



[Campus Map](#)



[Virtual Tour](#)

