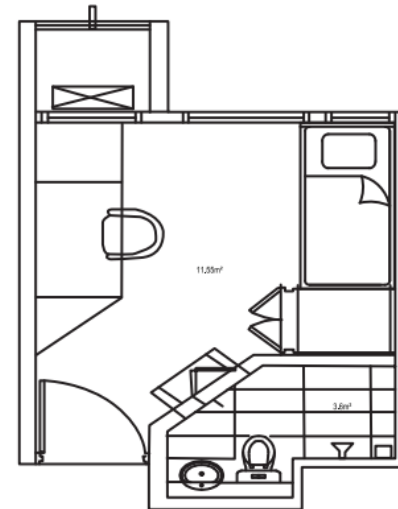




SDSEB A/C

Room Type	Location	Room Rates (Per Month)	Room Rates (Per Day)	Note
Super Deluxe Single Ensuite Bathroom, A/C	Perhentian (J6) & Lankayan (J3) Sipadan (J1) & Mabul (J2) – Upcoming Rawa (J4) & Gemia (J5) - Upcoming	RM1200	RM140	Includes mini fridge



SDSEB A/C

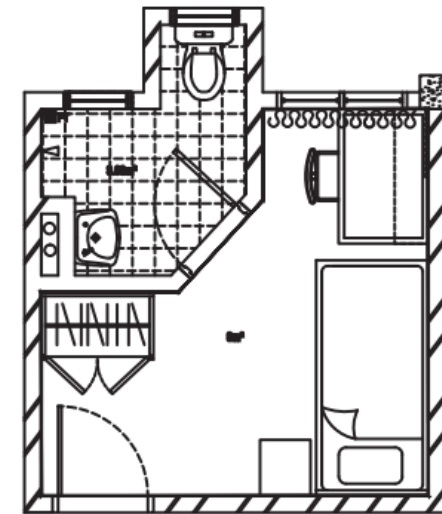
*Floor Area : 15 m²/163 sf²

(For illustration purposes only. The actual room may be different from the pictures shown)



SEB A/C

Room Type	Location	Room Rates (Per Month)	Room Rates (Per Day)	Note
Single Room with Ensuite Bathroom, A/C	Tioman (I1), Langkawi (I2), Redang (I3), Pangkor (I4) and Kapas (I5)	RM900	RM90	Shared fridge at pantry, individual bathroom



SEB A/C

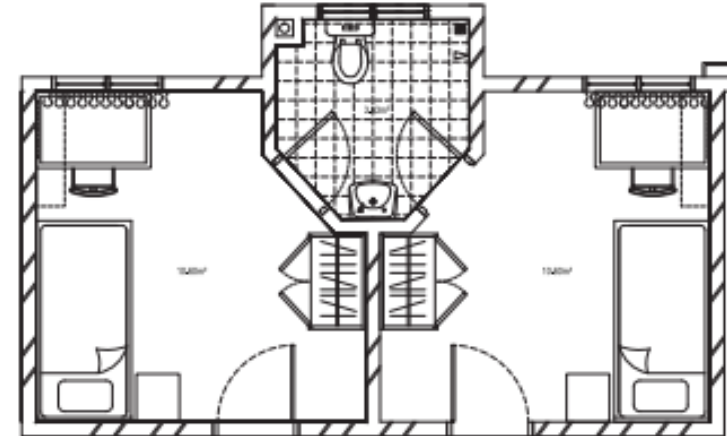
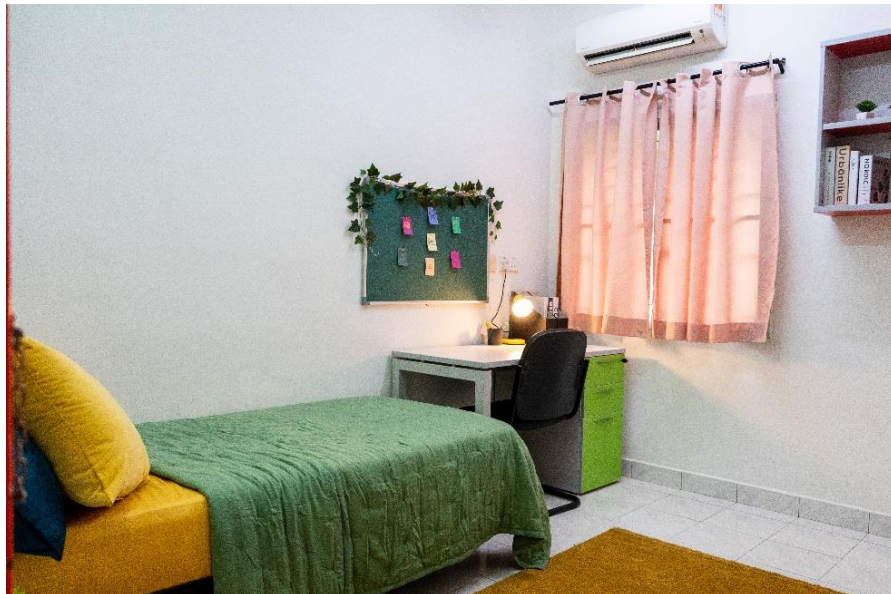
*Floor Area : 13 m²/142 sf²

(For illustration purposes only. The actual room may be different from the pictures shown)



SSEB A/C

Room Type	Location	Room Rates (Per Month)	Room Rates (Per Day)	Note
Single Room with Shared Ensuite Bathroom, A/C	Tioman (I1), Langkawi (I2), Redang (I3), Pangkor (I4) and Kapas (I5)	RM800	RM85	Shared fridge at pantry, 2 residents sharing bathroom



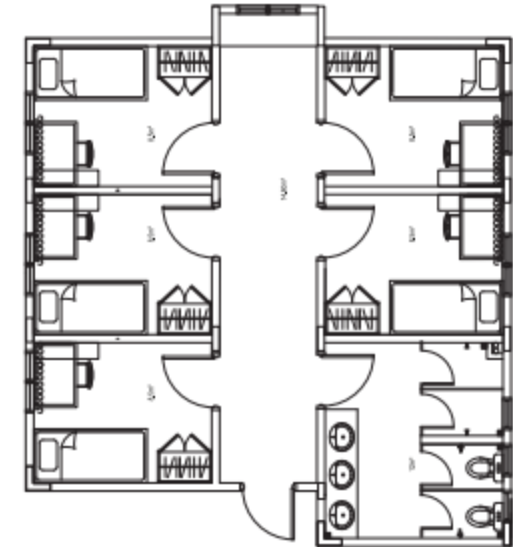
SSEB A/C
*Floor Area : 13 m²/140 sf²

(For illustration purposes only. The actual room may be different from the pictures shown)



SSB A/C

Room Type	Location	Room Rates (Per Month)	Room Rates (Per Day)	Note
Single Room in 5 Rooms Flat, Shared Bathroom, A/C	Pangkor (I4) and Kapas (I5)	RM750	RM80	Shared fridge at pantry, 5 residents sharing bathroom



SSB A/C

*Floor Area : 9.5 m²/102 sf²

(For illustration purposes only. The actual room may be different from the pictures shown)



TWIN A/C

Room Type	Location	Room Rates (Per Month)	Room Rates (Per Day)	Note
Twin Shared Room in 3 Rooms Flat, Shared Bathroom, A/C	Tioman (I1), Langkawi (I2), Redang (I3)	RM600	RM75	Has a balcony (B & C floor only), Shared fridge at pantry, 2 person in one room



TWIN A/C

*Floor Area : 12 m² / 129 sf²

(For illustration purposes only. The actual room may be different from the pictures shown)



FSB

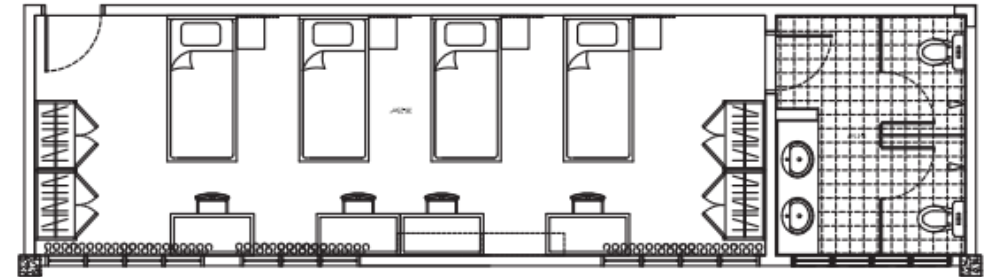
Room Type	Location	Room Rates (Per Month)	Room Rates (Per Day)	Note
Four Shared Room, Shared Bathroom	Tioman (I1), Langkawi (I2), Redang (I3)	RM550	RM70	Shared fridge at pantry, No AC, 4 residents in one room



FSB

*Floor Area : 48 m²/519 sf²

**Room dimensions
stated are approximate.*



(For illustration purposes only. The actual room may be different from the pictures shown)



Room Type	Location	Room Rates (Per Month)	Room Rates (Per Day)	Note
Accessible Room, A/C	Perhentian (J6) & Lankayan (J3) Sipadan (J1) & Mabul (J2) – Upcoming Rawa (J4) & Gemia (J5) - Upcoming	RM1200	RM140	Mini fridge, Ensuite bathroom
	Tioman (I1), Langkawi (I2), Redang (I3), Pangkor (I4), Kapas (I5)	RM900	RM90	Shared fridge at pantry, Ensuite bathroom

Note: The university has wheelchair friendly accommodations located on the ground floor.

If you have a physical disability or have special needs, kindly indicate when applying via OLAA and provide written medical reports from a registered physician/doctor. These will be forwarded to our Student Wellbeing and Learning Support Office for further advise and assessment.

