



Nottingham University  
**Business School**

UK | CHINA | MALAYSIA

# MBA Programmes

**2020**

**University of Nottingham Malaysia**



# Extraordinary starts here

Welcome	2
The Nottingham MBA	3
Why do the Nottingham MBA	4
The Nottingham MBA class profile	5
Our MBA programmes	7
How to apply	9
Get social	10



## Top 100

of Full-Time MBAs  
in the UK

- The Economist's 2019  
Which MBA Ranking



## 17,000

Business School  
alumni in over  
110 countries



# Nottingham University Business School

Nottingham University Business School is an international leader in finance and management education and part of an elite global group of EQUIS and AMBA accredited business schools. The School has unrivalled global reach through its three campuses in the UK, China and Malaysia, providing a unique global perspective and connection to changing business ideas.

Established in 2000, Nottingham University Business School (NUBS) Malaysia has 20 years of experience in providing award-winning quality teaching and scholarship in various areas of business, management and finance. The School's presence in Malaysia provides students with unique insights into Asian business growth and development whilst reading towards a British degree.

The Nottingham MBA is highly valued by corporations worldwide as an ideal preparation for senior executive positions and leadership roles in public, and private sectors. Our graduates are highly sought-after in the job market, with many alumni holding leadership positions both in Malaysia and internationally.

We strive to balance the constructs of theory, application and practice in our delivery of the course. The environment provided by the School and University offers a nurturing ambience for you to learn from academicians, industry practitioners and also fellow course members.

We invite you to peruse this brochure and our website to learn more about the Nottingham MBA, and wish you all the best as you embark on a new journey towards professional development and learning.

**Dr Anita Chakrabarty**  
Director, MBA Programmes

## Teaching Excellence

### Top 100 universities worldwide

- The University of Nottingham is placed in the top 100 universities globally in the QS World University Rankings 2020, which also ranks us amongst the Top 100 in 2020 for 'Economics and Econometrics' and 'Statistics and Operational Research'.
- The University is ranked 152 in the world in the Times Higher Education World University Rankings 2020.
- The University of Nottingham has been awarded gold in the Teaching Excellence Framework, providing our students with teaching of the very highest quality

### World-class business school

- Corporate Knights 2019 ranks the Nottingham University Business School MBA no. 11 in the world and 4 in the UK for MBA education and faculty research in sustainability issues.
- The Nottingham MBA is placed in the top 100 in the Economist 2019 'Which MBA' Full Time MBA ranking.
- The Nottingham MBA is ranked amongst the Top 200 in the QS Global MBA rankings 2020
- Nottingham University Business School is part of an elite group business schools that have achieved both European Quality Improvement System (EQUIS) and Association of MBAs (AMBA) accreditations.

### World-leading research

- Nottingham University Business School is ranked 6th in the UK for research power in the latest Research Excellence Framework.

## Top 200

in the world

- QS Global MBA  
Rankings 2020





# The Nottingham MBA

The Nottingham MBA is ideal for individuals seeking to develop their potential to manage and lead in the current dynamic and complex organisational environment. It is a highly-valued qualification for middle and senior managers or entrepreneurs in both public and private sectors looking to develop their management skills for senior positions and enhance their career prospects and leadership capabilities.

The Nottingham MBA brings together diverse people, perspectives, and organisations to enhance management practice and respond to contemporary business and management issues such as sustainability, innovation and ethics.

## Emphasises critical thinking

For managing in dynamic and complex business environment

## Contemporary Focus

Sustainability, innovation and entrepreneurialism

\*awarded UN-PRME Champion status

## Global Experience

Be part of study tours to experience global perspectives in doing business



Top  
**100**  
universities  
worldwide

QS World University  
Rankings 2020

## Diverse student cohort

From different countries and diverse industry backgrounds



## Customised learning experience

Study at your own pace and choose your preferred modules

## Why do the Nottingham MBA?

At our business schools in the UK, China and Malaysia, you will be inspired by leading researchers, senior industry figures, thinkers and people with significant experience in business. You will gain not only the knowledge and understanding needed to succeed and lead in your chosen career, but also the skills to make it happen.

 [nottingham.edu.my/business/mba](https://nottingham.edu.my/business/mba)

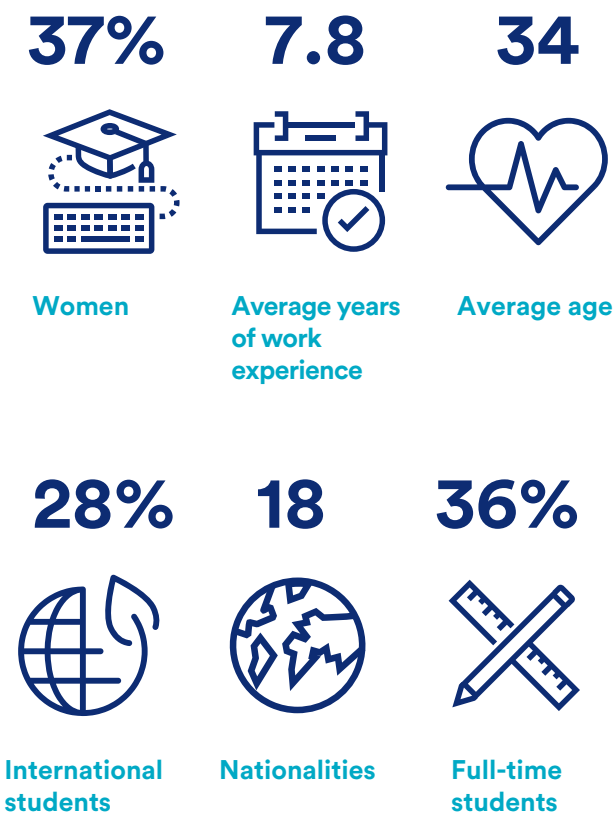
**Top 100  
MBA**

\*The Economist 2019





# The Nottingham MBA class profile (2015-18)



“I got to see first-hand the economic powerhouse that is China – from its world-class infrastructure, to the scale of its industry, supported by its vibrant and energetic populace.”

Neil Edmonds, MBA (2018 study tour to Shanghai)

## Global Experience Opportunity

The Nottingham University Business School MBA programme organises international study tours for the students every year. These study tours offer a unique and invaluable business and cultural programme, allowing students to gain direct experience of contemporary business and management issues. The tours include visits to global companies such as Lenovo and Tencent, meetings with top executives as well as relevant universities for exposure to business engagement and business research apart from cultural excursions.

Study tour destinations focus on emerging markets, with past tours having taken students to Shanghai, Ningbo, Beijing and Taiwan.

Students at Nottingham University Business School Malaysia are also invited to participate in MBA study tours that are organised by Nottingham University Business School (UK), which include study tours to the United States, China and other parts of the world.

The study tour is an option available to full-time and part-time MBA students, as a separate activity from those covered by the programme's fees.



MBA study tour participants at the Shanghai Stock Exchange in January 2018



"We visited the offices of BDO China, Lenovo, Tencent and Huawei, whose executives provided us invaluable insight on doing business in China. The trip benefited me immensely, allowing me to see up-close China's strength not only in manufacturing but also as a leader in innovation."

Ethan Siew, MBA (2017 study tour to Beijing)



MBA study tour participants at the Summer Palace in Beijing, in January 2017

"We learnt how innovation drives the titans of Taiwan, about leadership attributes that are required to become successful entrepreneurs, and how even the most technically-proficient entrepreneur has to also be able to handle accounting, marketing, managing people and operations management aspects of the business."

Chay Guo Wei, MBA (2016 study tour to Taiwan)

"This was my first visit to China and it was an eye-opener for me, as we went from one business to another to see first-hand the efficiency of Chinese businesses, and to appreciate China's role not only in innovation, technology but also in the global economy. I enjoyed every bit of the company visits, which greatly complemented my MBA classroom experience."

David Masua, MBA (2019 study tour to Shanghai)



# Our MBA programmes

**Our Master of Business Administration (MBA) programmes provide courses in general corporate and financial management for individuals seeking career advancement or diversification.**

The MBA adds value to your first degree by developing an integrated and critically-aware understanding of management and organisations in a global context. You will develop knowledge and skills in fundamental management disciplines while allowing customisation with specialist modules in various areas of management. The syllabus is similar to that offered at Nottingham University Business School, UK, and our partner institutions overseas.

## MBA MBA Finance

### Course structure

You must complete a total of 12 taught modules (8 core modules and 4 elective modules) and a Management Project.

Most modules will involve group work with like-minded individuals from diverse industries and countries. You will also develop the skills to implement agreed solutions effectively and efficiently, along with interpersonal skills to enable you to interact across a wide range of business stakeholders.

We also host a Business Leaders Seminar Series, which serves as a platform for interaction and exchange of ideas with industry leaders from various sectors, as well as local industry visits or round table meetings. You will also have the opportunity to attend study skills sessions, workshops on soft skills such as teamwork, leadership and critical thinking, seminars on research methods relevant to management projects and webinars for further professional and personal development.

Typical core modules	Elective modules*	Management project
<p>Core modules are aimed at developing knowledge of the fundamental management disciplines, and the application of this knowledge to business issues.</p> <ul style="list-style-type: none"><li>Accounting and Finance</li><li>Business Economics</li><li>Entrepreneurship and Creativity</li><li>Managing People</li><li>Marketing</li><li>Operations Management</li><li>Strategic Management</li><li>Sustainable Decisions and Organisations</li></ul>	<p>Elective modules allow you to concentrate in-depth on more specific subjects according to your interests and career requirements.</p>	<p>Each student is required to complete a management project that will focus on an area of interest. Students may choose any one from three types of management project:</p> <ul style="list-style-type: none"><li>Management Research Project (20,000 words) on an approved subject (weight 100%)</li><li>Company-based Individual Research Document (15,000 words) (70%) + Individual presentation (20 minutes including Q&amp;A) and submission of slides (30%)</li><li>Management Project (Business Analysis Project) (15,000 words) (70%) + Individual presentation (20 minutes including Q&amp;A) and submission of slides (30%)</li></ul>

\*Elective modules are subject to change

# Elective modules\*

## MBA

Any four modules from the MBA Finance electives or additional modules (see below).

## MBA Finance

Students must take the following modules:

- Corporate Finance
- Portfolio Management and Investment Analysis

You will then choose a further two from the list of additional modules below:

## Additional modules

- Business and Commercial Law
- Business Intelligence in the Digital Economy
- Entrepreneurship in Practice
- Innovation Management
- Leadership and Change Management

\*Elective modules are subject to change

## Overseas study

Individuals wishing to study overseas can take up to two approved modules delivered by Nottingham University Business School UK, or our overseas partner institution in Singapore, PSB Academy (subject to the availability of modules).

## Programme delivery

Our MBA offers both full-time (1 year) and part-time (2-4 years) study modes. Taught modules are delivered in ‘block’ format at our Kuala Lumpur Teaching Centre. Students will be able to select elective modules they wish to undertake and complete the programme according to their own schedule.

Each module will generally have 33 hours of teaching, delivered in ‘block’ format over a period of 9-12 days with breaks in between.

Intakes:

- February: Part-time
- June: Part-time
- November: Part-time
- September: Full-time and part-time

## Assessment

Depending on the module, you may be assessed by examination, group or individual coursework, group or individual presentations, or a combination of assessment methods.

## Entry requirements

A relevant second class honours degree (or international equivalent) or a relevant professional qualification deemed equivalent to a first degree with honours, plus at least three or more years of full-time management or leadership work experience, normally gained since graduating from the first degree. Non-UK qualifications will be assessed against this standard.

### Entry requirement guidelines

Applicants must have graduated from an approved university. Other equivalent qualifications will be considered on a case-by-case basis.

## English language requirements

IELTS (Academic): 6.5 (with no less than 6.0 in each element)

TOEFL (iBT): 87 (minimum 20 in Speaking and 19 in all other elements)

PTE (Academic): 62 (with no less than 55 in each element)

MUET: Band 4

### English language requirement guidelines

IELTS, TOEFL and PTE (Academic) test results must be less than two years old and all IELTS must be the academic version of the test.

MUET results are valid for five years from the date of the release of results.

## Fees

	Malaysian fees	International fees
MBA	RM60,500 per programme*	RM66,700 per programme*
MBA Finance	RM60,500 per programme*	RM66,700 per programme*

\*The payment installment scheme will differ for full and part-time students.



# Future Leaders Award

The Future Leaders Award is a partial scholarship at the value of 25% of the tuition fees and is open to MBA students of NUBS Malaysia and students applying for the MA Educational Leadership and Management, School of Education. Students applying for this award must meet the following criteria:

- fulfill all admission requirements
- possess an upper second class honours degree or equivalent
- have at least 5 years of relevant working experience (must be reflected in the personal statement)
- demonstrate outstanding leadership potential

Further scholarship information can be found at

🖱️ [nottingham.edu.my/Study/Fees-and-Scholarships](https://nottingham.edu.my/Study/Fees-and-Scholarships)

# Singapore MBA

The Nottingham MBA is delivered at three locations - at Nottingham University Business School (NUBS) UK, NUBS Malaysia and at our overseas partner institution in Singapore, PSB Academy. Both the MBA and MBA Finance programmes are offered in Singapore - delivered by Nottingham academic staff and supported administratively by PSB Academy.

For more information on the Singapore MBA, please visit

🖱️ [psb-academy.edu.sg/the-university-of-nottingham](https://psb-academy.edu.sg/the-university-of-nottingham)

# Global study experience

Nottingham MBA course members in each location - UK, Malaysia and Singapore - have the option of taking up to two approved modules delivered in any of the other locations, offering opportunities for a truly global study experience.






# How to apply

You can apply online via our Online Admissions Application Portal (MyNottingham). To create an application you will need to register to create an account, or log in if you have previously applied online.

 [mynottingham.nottingham.edu.my](https://mynottingham.nottingham.edu.my)

You can also download an application form from the website. Paper copies are also available. We can mail it to you or you can visit in person to collect one.

 +6 (0)3 8924 8686

 [nottingham.edu.my/applications](https://nottingham.edu.my/applications)

## Application fee

The University charges an application fee of RM100 for Malaysian applicants and RM200 for international applicants for all programmes. This fee applies to online and paper applications.

 [nottingham.edu.my/applications](https://nottingham.edu.my/applications)

## Step 1

Apply online or complete the paper application form (details above).

Supporting documents needed

- academic certificates and transcripts of previous studies
- copy of ID page of passport for international applicants
- copy of NRIC for Malaysian applicants
- English language qualifications (if applicable)
- two reference forms for MBA applications

## Step 2

An acknowledgement email (with Nottingham ID) will be sent to you upon receiving of your application.

The University of Nottingham has made every effort to ensure that the information in this brochure was accurate when published. Please note, however, that the nature of the content means that it is subject to change from time to time, and you should therefore consider the information to be guiding rather than definitive. You should check the University's website for any updates before you decide to accept a place on a programme by visiting

 [nottingham.edu.my/business/mba](https://nottingham.edu.my/business/mba)

Where there is a difference between the contents of this study guide and our website, the contents of the website take precedence and represent the basis on which we intend to deliver our educational services to you.

© University of Nottingham 2020. All rights reserved.

Edited May 2020

## Step 3

Your application will be considered by our admissions tutors and a decision will be made within two working weeks. A confirmation email will be sent to applicants once a decision has been made. Successful applicants will receive a notification through email and will be able to log in to MyNottingham to download the following documentation (hard copies are not provided):

- offer letter
- offer pack (containing next steps, accommodation, student visa, Wellbeing and Learning Support Services and payment of tuition fees information)-link will be provided in the offer letter

Applicants and agents will be able to view the progress of applications and make payments online through MyNottingham.

## Step 4

Offer holders will be given a four-week deadline to accept the offer and pay a tuition fee deposit of RM1,000 (Malaysian offer holders) or RM2,000 (International offer holders) before the lapsed date in the offer letter. This amount shall be offset from the first semester's tuition fee.

## Step 5

You will be able to apply for on-campus accommodation and your student visa after you have accepted your offer and paid the tuition fee deposit.

## Step 6

Prior to registration day, you will receive an email which contains registration information.

It is important to note that the University of Nottingham Malaysia requires all offer holders to complete two different parts of the registration process-online registration and in person registration.

# Get social

## Connect with Nottingham

Find out about student life at Nottingham and interact with the University community, anytime, anywhere in the world.

Discover more:

 UoNMalaysia  
 UoNMalaysia  
 UoNMalaysia







# Nottingham University Business School

UK | CHINA | MALAYSIA

For MBA enquiries contact:



+6 (0)3 8924 8686



[nottingham.edu.my/make-an-enquiry](https://nottingham.edu.my/make-an-enquiry)



@nubsmalaysia



@nubsmalaysia



**RUSSELL  
GROUP**



Teaching  
Excellence  
Framework

