



**University of
Nottingham**

UK | CHINA | MALAYSIA

20
years

**Our history
your future**

2020

**Arts and Social Sciences
Undergraduate prospectus**



Realise it



Detect it



See it



Inspect it



Experience it



Achieve it



Perfect it



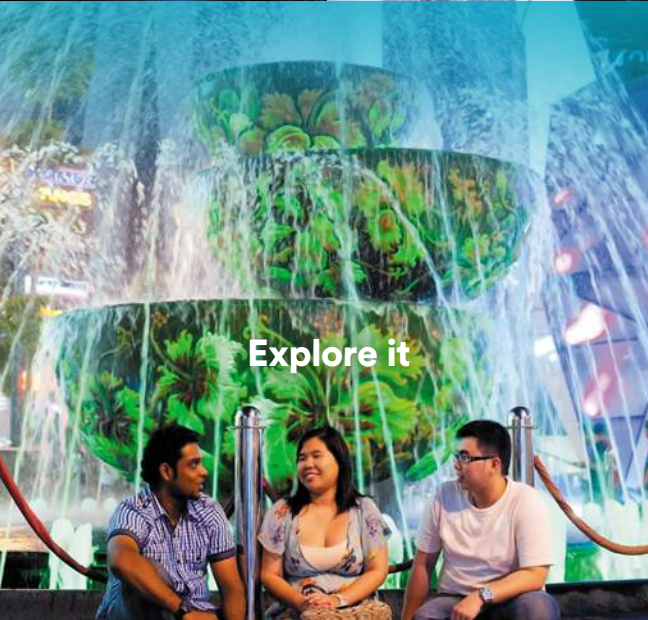
Prove it



Step into a world beyond limits



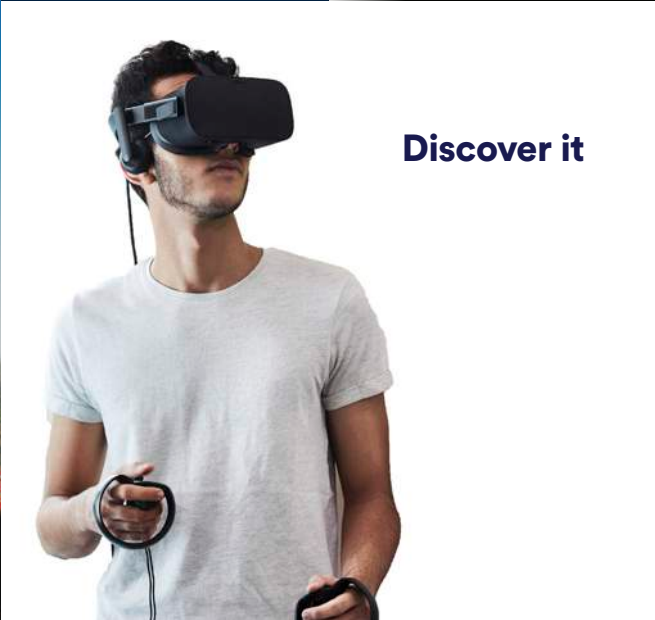
Create it



Explore it



Visualise it



Discover it



Share it

Why Nottingham?

Welcome to the world of Nottingham

Access to a world-class UK education

Our programmes are Honour degree programmes and taught in English. All students graduate with the same degree and the same certificate, irrespective of which campus they study at. Our degrees are accredited by international professional bodies such as:

- Association of Chartered Certified Accountants (ACCA)
- Association for Nutrition (AfN) UK
- British Computer Society (BCS)
- British Psychological Society (BPS)
- Certified Practising Accountant (CPA) Australia
- Chartered Institute of Management Accountants (CIMA)
- Engineering Council, UK (EUCUK)
- European Foundation for Management Development (EFMD) Quality Improvement System (EQUIS)
- General Pharmaceutical Council (GPhC), UK
- Institute of Chartered Accountants in England and Wales (ICAEW)



Worldwide study abroad opportunities

Wealth of opportunities at our campuses in UK, China and partner universities across the globe

5 Star rating in SETARA 2017

under the mature university categories

About **5,000** students from 85 countries study at Malaysia campus

Top **100** universities worldwide

QS World University Rankings 2020

Sports University of the year

The Times and The Sunday Times Good University Guide 2019

Over **290,000** alumni from across the globe



Alumni from our UK, China and Malaysia campuses

Nobel prize-winning academics

University of Nottingham academics have won Nobel Prizes twice since 2003

Renowned for our commitment to teaching and learning, we are in the top 100 of universities internationally.* Recognised globally for teaching excellence, acclaimed for our life-changing research and home to students from all over the world, University of Nottingham is an inspiring place to study and work.

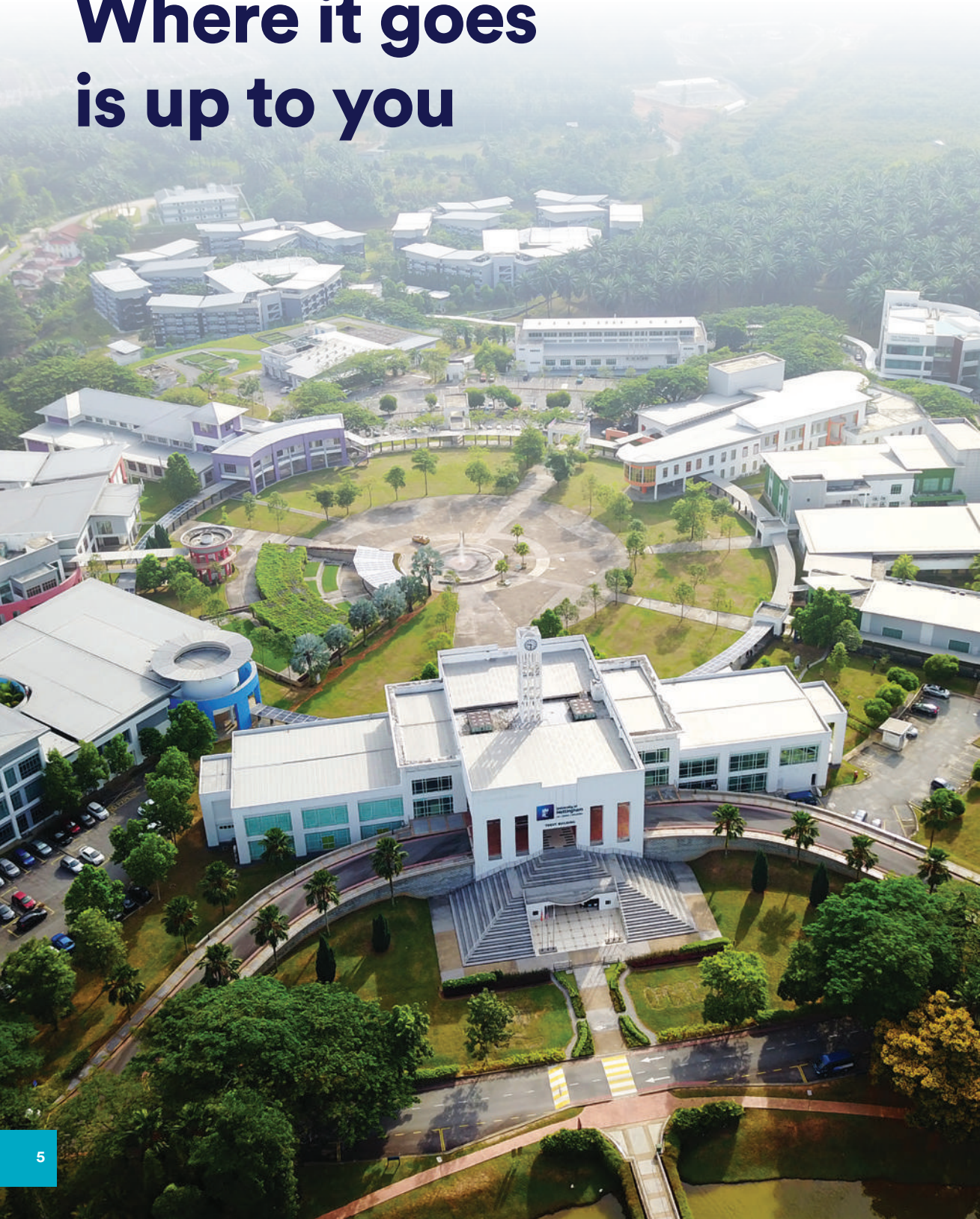
In 2000 we became the first British university to set up a campus both outside of the UK and in Malaysia, earning University of Nottingham the Queen's Award for Enterprise 2001 and the Queen's Award for Industry (International Trade) 2006.

Since opening, Nottingham Malaysia has welcomed students from across the globe and gained a reputation for world-class research and teaching in arts, engineering, science and social science.

* QS World University Rankings 2020

2 international campuses in China and the UK

It starts here
Where it goes
is up to you



Contents

Teaching and learning	7	Arts and Social Sciences	43
Research	9	Applied Psychology	44
Our campus	11	Business	47
Student life	13	Economics	55
Sporting opportunities	15	Education	58
Careers	17	English	61
Our alumni	19	Media, Languages and Cultures	64
Services for students	21	Politics, History and International Relations	70
Accommodation	23		
International student support	25	How to apply	75
International campuses	27	Where to find us	77
Overseas opportunities	29	Index	79
Funding your studies	31	Get social	81
See for yourself	33		
		Foundation programmes	35
		Arts and Education	40
		Business and Management	40

Teaching excellence

Students are the heart of the University and learn in an academically-stimulating environment. Students are especially nurtured with regards to personal development, which includes current entrepreneurial and leadership skills. These commitments and their achievement are recognised by the Teaching Excellence Framework (TEF) Gold rating for outstanding teaching achieved in 2017 and Rating System for Malaysian Higher Education Institutions (SETARA) 2017 5-star 'Excellent' for mature university category. There are just two of the most recent ratings received for the quality of teaching and learning at Nottingham.

The SETARA rating is further evidence of our strong commitment to the growth of the higher education sector in Malaysia, in providing access to students to earn an international degree with mobility opportunities across campuses in the UK and China. In addition, being part of two quality assurance jurisdictions (QAA*, UK and MQA**) further strengthens our quality standing, as we are independently evaluated by these agencies. The University is consistently among the highest ranking performers in independent teaching assessments.

An internationally recognised UK degree

All degrees offered by University of Nottingham Malaysia are University of Nottingham degrees and are subject to the same quality assurance processes as those offered in the UK. You will graduate with a degree from University of Nottingham, irrespective of the campus at which you complete your programme, be it in the UK, China or Malaysia. You will receive a UK-style education and all our degree programmes, coursework materials, and assessments are in English.

Academic excellence

All academic staff at the University of Nottingham Malaysia are selected based on their excellence in teaching and research. Diversity is our strength. Our highly qualified academic staff members are from the UK, Malaysia and various countries recruited based on open international competition.

Besides their qualification in their respective discipline, they are required to obtain Post Graduate Certificate in Higher Education (PGCHE). Apart from teaching, academic staff members are required to be active in research and publication and be involved in community and international engagement.

Quality programmes

We offer a comprehensive and varied range of programmes, catering to students at all levels, through foundation, undergraduate and postgraduate to PhD. Our programmes span a range of disciplines and subjects across arts and social sciences, engineering and science. Our degrees are accredited by both the Malaysian and UK quality assurance agencies and by relevant national and international professional bodies such as the Association of MBAs, EQUIS, the UK Engineering Council, the General Pharmaceutical Council (UK), Board of Engineers Malaysia (BEM) and Pharmacy Board Malaysia (PBM).

Our undergraduate and postgraduate taught programmes provide a structured framework for study. They are based upon a programme of strategic and innovative delivery and assessment mechanisms and also traditional ones such as lectures, seminars and tutorials. Students will normally complete compulsory core modules and will have the opportunity to select from a number of optional modules.

These programmes aim to equip you with a curiosity-driven and deep understanding of your subject, as well as a critical approach and skills relevant to your future career. Our teaching is informed by the very latest research findings and our programmes constantly evolve to incorporate new research developments, with many delivered by research scholars, passionate about their subjects. We also regularly consult with businesses and employers to ensure our programmes are structured with the opportunity to develop key transferable skills for employment.

Envisioning the global workplace

As an international university we pride ourselves on generating graduates with global attributes for the global workplace. Our student-centred style of learning will equip you with the skills and analytical abilities necessary to thrive in business and industry. Teaching and learning opportunities at Nottingham Malaysia are directly informed by cutting-edge research and technology.

Programme activities are enriched by guest lectures from visiting scholars, research seminars, workshops and student conferences. Classes are led by tutors who are actively involved in extending the boundaries of our knowledge, and who seek to promote a community of learning in which undergraduate and postgraduate teaching feeds directly into a collective and collaborative intellectual endeavour. The relatively small size of our student body with an average staff student ratio of 1:14, allows for a more intimate teaching and learning experience, with academics readily approachable to provide further one-on-one support where needed.

In addition, our personal tutorial system gives you access to academic staff to assist you in any non-academic issues that you may face during your time at University.

 nottingham.edu.my/teachingandlearning

* The Quality Assurance Agency (QAA) for Higher Education's independent review of teaching quality in the UK.

** The Malaysian Qualifications Agency (MQA) for quality assurance practices and accreditation of national higher education in Malaysia.



World-changing research

- Over 400 papers were published by academics in 2018*
- We currently have a portfolio of more than RM43 million for both internally and externally funded research-related activities.
- 5* rating from the Malaysian Research Assessment Instrument (MyRA)

* As submitted to MyRA 2018

Accolades

Recent awards for our academic staff include: Appointment as Academy of Science Malaysia Fellow (FASc) 2019; Winner of the L'Oréal-UNESCO International Rising Talents award 2018; Winner of the L'Oréal-UNESCO For Women in Science National Fellowship 2019;

Two shortlisted nominees for the Science, Technology and Digital category Women of the Future awards South East Asia 2020.

Support

We provide extensive support for our academic staff through initiatives such as the Early Career Researcher programme, and workshops organised by the newly formed Research and Knowledge Exchange hub.

We run regular competitions with opportunities for internal funding for various research-related activities.

Research

Here at Nottingham we deliver research that transforms lives and shapes the future, with a particular focus on addressing the challenges facing South East Asia and beyond.

We currently support more than 300 postgraduates and 280 research-active staff working on a large portfolio of interdisciplinary projects funded by government agencies, non-governmental organisations and companies.

Many of our research projects have international collaborators.

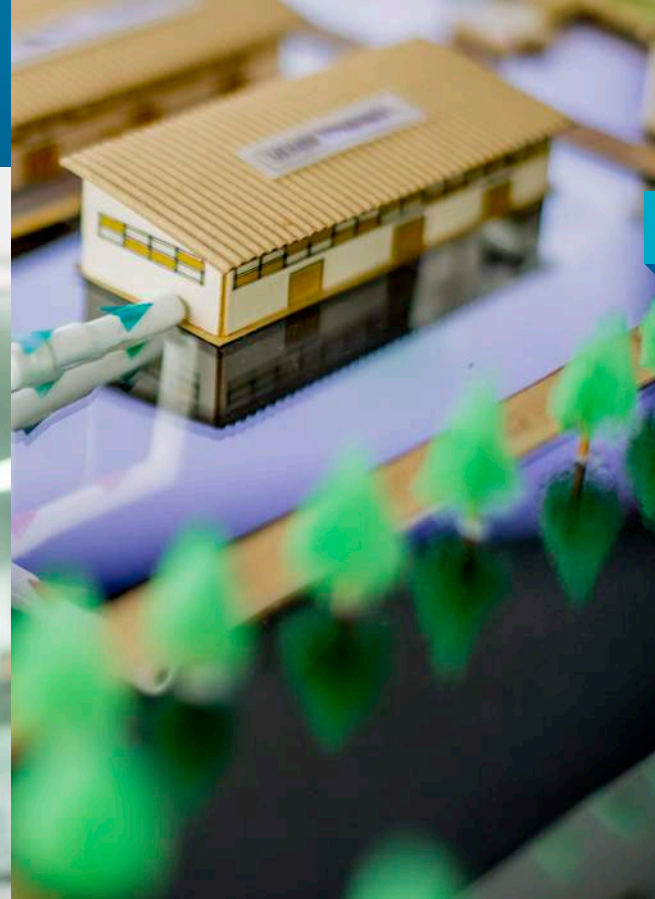
Future food Malaysia

In the face of climate change we must develop new, resilient crops.

Yields must also increase to feed the additional two billion people expected by 2050.

Better access to healthier, safer, more nutritious food is needed in all countries due the growing prevalence of pollutants, nutrient deficiencies and over-processed foods.

Our research identifies sustainable local solutions in Asia to the global challenge of feeding a growing population in a changing world. We have more than 150 active research projects spanning schools and departments in both faculties.



Developing sustainable societies

The world is changing in the face of population growth, climate change and diminishing natural resources we must deepen our understanding of changing environments and pioneer new ways to save our precious planet.

Our research seeks solutions towards preserving our environment for a more sustainable future. We have more than 100 active research projects spanning schools and departments in both faculties.

In addition to these major interdisciplinary research themes, we have established research groups and institutes on: digital frontiers, nanotechnology and advanced materials, green technologies, smart manufacturing, aerospace technology, and Inclusion and diversity in the workplace.

On campus

Combining beautiful gardens, striking architecture and state-of-the-art learning and research facilities, our University is an inspirational place to live, work and study.

A strong sense of community

University of Nottingham Malaysia is characterised by its strong sense of community, created by approachable staff, a welcoming student body, excellent support services and a wide range of activities to help you meet new people and feel at home.

A truly Malaysian setting

We are based on a self-contained site near Semenyih in the state of Selangor, 30 kilometres from Malaysia's capital city, Kuala Lumpur (KL). The beautiful setting and state-of-the-art teaching, learning, research and leisure facilities combine to make an inspirational environment for studying and student life.

Transport is available from the campus to the nearest bus and rail stations, providing easy access to KL and the surrounding region. Kuala Lumpur International Airport is just a 30-minute drive away, making it an ideal base from which to explore locally and further afield.

Amenities for your convenience

Our self-sufficient campus provides students and staff with a range of amenities. Facilities include:

- 24-hour computer access
- convenience stores
- vending machines
- ATMs
- an extensive library
- a sports complex
- an Islamic Centre
- a health centre
- a creche

Prayer rooms are available 24-hours a day for Muslim students, with a free bus service provided to the mosque in Semenyih for Friday prayers. Buddhist, Christian and Hindu places of worship can be found in Semenyih and university facilities are also available to support and host these activities.

Eat, drink and socialise

The campus has an indoor and outdoor food court based in the Students' Association Building, which has recently been extended and renovated, providing a wide choice of food for all tastes. The University has also invested money in creating social and learning hubs for students in the Students' Association Building and around campus. These are perfect places to relax and catch up with friends.



Student life

Our vibrant campus is welcoming and has many events and activities on offer. The Students' Association provides many opportunities to enhance university life, and our facilities enable you to socialise and participate in activities.

Find out more about the Students' Association at

-  sanottingham.org
-  [sauonm](https://www.facebook.com/sauonm)
-  [saunmalaysia](https://www.instagram.com/saunmalaysia)



Students' Association of UNM

As a student at the University, you are automatically a member of the Students' Association (SA), which focuses on student experience and also acts as the bridge between the student community and University management.

The SA encourages you to get to know your peers and get involved with the wide range of events and activities organised by the SA Executives and its clubs and societies, beginning with Freshers' Week for new students.

The SA receives an annual grant from the University in order to offer activities and improve equipment and facilities for students. We also have the authority to raise additional funds from profits made, by running activities and via business ventures run by students, such as its very own merchandise shop Nott A Shop.

You may choose to take the leadership challenge as an elected student officer in the SA Executive Committee, the Student Council Steering Committee, clubs and societies executive positions, or use your talents to organise or participate in events and activities. Whatever you decide to do, there are ample opportunities available to help develop your skills while enhancing your CV.

Freshers' Week

The SA aims to provide all new students with a fun-filled Freshers' Week experience. During Freshers' Week you can enjoy various events designed to welcome you to the University, make new friends and experience the diversity. Past activities have included ice-breaking sessions, karaoke, campus-wide treasure hunts, cabaret, bowling, BBQ nights, music jamming sessions and much more.

Networks

Networks bring together students either to discuss issues of importance or to work together to organise events, campaigns or other forms of value-adding activities to our student community.

Each network is chaired by an SA Executive Officer. Networks are also channels to collectively bring up welfare concerns to the University management while recommending ways to improve and resolve such matters.

Whilst playing a part in creating a green environment, the

Sustainability Network also focuses on activities that are charitable and promote equal opportunity as well as social justice.

The networks under the various executive officers are:

- **Education Network** – Education Officer
- **International Students' Bureau (ISB)** – International Students' Officer
- **Marketing and Communications Network** – Vice President
- **Postgraduate Students' Network (PGSN)** – Postgraduate Officer

- **Sports Network** – Sports Officer
- **Sustainability Network** – Sustainability Officer
- **Welfare Network** –

Home Students' Officer and International Students Officer who deal with:

- Accommodation
- Food
- Health
- Security
- Transport



Student Council

The Student Council serves as a key component of our student community it is the highest governing and policy setting body of the Students' Association (SA). Council consists of over 40 student representatives who serve in the interest of all students. Councillors serve at various levels across our vibrant student community under the positions of: Student Council Steering Committee, SA Executive Officers, faculty and school representatives, postgraduate representatives, clubs and societies representatives, hall tutors and five random voting members from the student body. Council's roles include the consideration of business affecting the student community, initiation and framing of SA by laws and the regulation of SA policy

Clubs and Societies

The SA has about 80 clubs and societies covering a wide spectrum of interests:

- Academic
- Creative arts
- Cultural
- Religious
- Special interests
- Sports

It is highly recommended that you become a member of one or more of our clubs and societies to build up your CV and for your own self-development.

Students' Association Executive Committee

The SA is run by an Executive Committee (EXCO) of nine elected full-time student volunteers holding various portfolios to serve the student community. The EXCO aims to improve the experience of student life by providing representation, development opportunities and quality services for all our students. No matter what is your level of study, your student experience will be taken care of by your elected peers from the time you step into the University until the day you graduate.

To see more of what is happening at our University, visit nottingham.edu.my/currentstudents

Positions held by the Executive Committee include:

- Activities Officer
- Education Officer
- Home Students' Officer
- International Students' Officer
- Postgraduate Students' Officer
- President
- Sports Officer
- Sustainability Officer
- Vice President

Sporting opportunities

As well as an excellent academic reputation, Nottingham is well known for its sporting success and was the winner of *The Times and The Sunday Times Good University Guide Sports University of the Year 2019*.



Whether you're passionate about competing or just fancy something new, we've got it covered.

Find out about getting involved in sport at Nottingham:

nottingham.edu.my/sport

Sports facilities

University of Nottingham Malaysia boasts an impressive range of sports facilities which are free to all students and staff.

Indoor facilities include courts for badminton, basketball, futsal, netball, squash, and volleyball; a fully-equipped gymnasium; and a multi-purpose room for martial arts or table tennis.

Outdoor facilities include a five-a-side football and hockey pitch; a jogging track; a multipurpose field with football, rugby and cricket pitches; a mini archery range; a multipurpose outdoor court suitable for basketball, futsal, and volleyball; and two tennis courts.

We also have a 25m outdoor swimming pool with mixed gender, male and female only sessions.



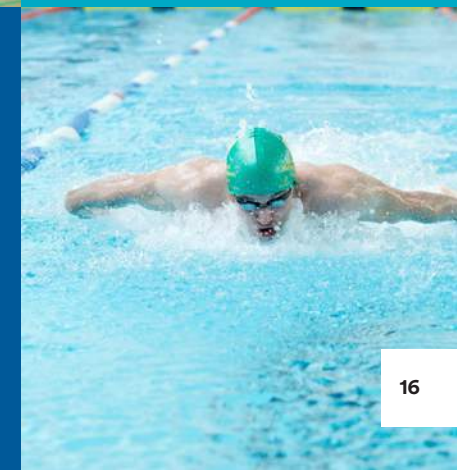
← Sports Clubs

The Students' Association (page 13) supports many sport clubs that you can join during your time with us. This include clubs for archery, badminton, cheerleading, chess, cricket, dodgeball, fitness, football, frisbee, hockey, martial arts, netball, paintball, rock climbing, rugby, squash, swimming, table tennis and volleyball.

Tri Campus Games

Unique within higher education, our Tri Campus Games see students from each of our Nottingham campuses – Malaysia, the UK and China – competing against each other in several sports. The Games involve nearly 200 students from more than 20 nationalities and are held on a different international campus each year.

Get involved in the games through one of the Students' Association sports clubs or come along and show your fellow students your support!



Kick start your career

Our experts in Careers Advisory Service offer ongoing support for planning your career throughout your time at University and beyond.



Our services will provide you with essential resources and guidance for your career choices and offer many opportunities for you to develop the skills needed to plan and manage your future. We help you find your future by:

- arranging company presentations, field trips, networking events, roadshows and on-campus interviews
- creating awareness of the importance of career information, resources, skills development and career guidance to fully prepare you for the workplace
- liaising and maintaining close links with potential employers to obtain information on career opportunities, internship and training programmes and competitions
- maintaining good relationships and excellent collaborations with potential employers for the benefit of students, employers and the University
- offering advice on matters such as CV and cover letter writing, interview and job hunting skills
- organising events such as careers fairs, careers talks and employability workshops to provide invaluable opportunities to meet potential employers
- providing access to dedicated online and printed careers information on relevant occupations, employers and further study through the Careers Resource Centre
- providing you with necessary knowledge to manage your career expectations and enhance your employability

-  careers@nottingham.edu.my
-  UNM Careers
-  UNM Careers
-  blogs.nottingham.edu.my/careers
-  nottingham.edu.my/careers

Research shows that Nottingham is one of the most targeted universities by Britain's leading graduate employers.*

* Ranked in the top ten in The Graduate Market 2013-2018, High Fliers Research



Set yourself apart

The Nottingham Advantage Award is a voluntary extracurricular programme that enables you to develop further skills outside your main degree programme.

It provides the opportunity to gain additional skills and experiences that you can put on your CV, adding to the portfolio of employability skills that you will have developed by the time you graduate.

These include language learning, community volunteering, career skills and enhancing sustainability skills. Modules successfully completed under the Award are recognised on your degree transcript and those students who complete the full award (at least three modules) receive an additional certificate upon graduation.

 nottingham.edu.my/currentstudents/nottingham-advantage-award

Our global community



As a graduate of the University of Nottingham, you will join our global community of 290,000 alumni which includes pioneering scientists, international policymakers, leaders of national charities, newspaper editors, novelists, Olympic medallists and a Nobel Prize winner.

Our alumni

Graduates of the University of Nottingham automatically become members of our global alumni community enabling access to extensive services:

- alumni reunions
- lifelong access to the Careers Advisory Service
- masterclasses
- mentoring programmes
- recognition through Alumni Laureate Awards
- social networking events

 nottingham.edu.my/alumni

Alumni Online

Join our online alumni community to find and stay in touch with friends, enquire about the latest exclusive alumni events, gain access to social networking sites, subscribe to newsletters and receive the alumni magazine.

 alumni.nottingham.ac.uk/netcommunity

Follow us at:

-  UNMC Alumni
-  UNM_Alumni
-  unmalumniofficial

Notable alumni

We're proud of the contribution that our alumni make to society. Here's what some of them have gone on to do:

- **Dr Deng Yaping**—China's Sporting Star of the century
- **DH Lawrence**—author
- **Dr Stewart Adams OBE**—pharmacologist and creator of the painkiller ibuprofen
- **DYMM Tuanku Zara Salim**—Raja Permaisuri Perak
- **H. E. Mrs Nur Ashikin Mohd Taib**—Ambassador at Embassy of Malaysia to Sweden
- **John Rishton**—former CEO, Rolls-Royce
- **Judith McHale**—former Under-Secretary of State in the US Obama Administration
- **Molly Fong**—CEO of Body Shop (West Malaysia and Vietnam)
- **Sir Andrew Witty**—former Chancellor of University of the Nottingham and former CEO of GlaxoSmithKline
- **Sir Clive Granger**—economist and Nobel Prize Winner 2003
- **Sir John Sawers**—former Chief of the Secret Intelligence Service (MI6)
- **The late DYMM Sultan Azlan Muhibuddin Shah Ibni Almarhum Sultan Yussuf Izzuddin Shah Ghafarullah-lah**—former King of Malaysia and Sultan of Perak
- **The late DYMM Tuanku Ja'afar Ibni Almarhum Tuanku Abdul Rahman**—Former King of Malaysia and Yang Di-Pertuan Besar of Negeri Sembilan
- **YAM Tunku Tan Sri Imran ibni Almarhum Tuanku Ja'afar**—son of the former King of Malaysia
- **YM Tengku Tan Sri Dato' Seri Ahmad Rithauddeen Bin Tengku Ismail**—former Minister of Foreign Affairs, Minister of Trade and Industry and Deputy Minister of Defence, and Founding Chairman of the University of Nottingham in Malaysia Sdn Bhd

Your support network



Academic and practical support

Library resources

The library has a comprehensive collection of books to meet the taught programmes offered by the University. The library also has a wide spectrum of electronic and information resources, including subject-based reference enquiry, internet subject gateway and subject focused academic support services. Electronic resources can be accessed anywhere via internet.

 nottingham.edu.my/thelibrary

Student Service Centres

The Student Services Centre located in the Students' Association building helps you with accommodation, campus services, finance, sponsorship, support services, registry, and visa queries. For faculty matters you will need to visit your faculty office.

Student registry

The Student Registry Office oversees administrative matters that concern students, including issuing letters, processing withdrawal and suspension applications, producing official transcripts and certificates, maintaining the student records database, updating student details, setting the academic calendar, managing and updating programme information.

 nottingham.edu.my/studentregistry

Academic and personal tutoring system

At the start of each semester you will meet your personal tutor and may turn to them for advice for related matters.

English language support

The Centre for English Language Education provides English language support for all students who need it through our free in-session classes.

 nottingham.edu.my/celfe

IT services

IT Services provide a range of facilities both on campus and off campus. These include computer rooms, video conferencing facilities, print, copy and scanning facilities, and student portals for accessing study materials.

 nottingham.edu.my/IT-Services



Health and wellbeing

University Health Centre

We offer healthcare, a pharmacy, GPs, physiotherapy laboratory tests and referrals to hospitals.

 nottingham.edu.my/healthcentre

Counselling and mental health

Our free and confidential counselling service provides emotional support, self-help resources and individual counselling consultation where appropriate.

Academic and disability Support



We can help with personal and academic issues affecting your studies, including advice on writing techniques, managing your time, exam preparation, dyslexia support and support for other specific learning differences, as well as arranging support and access for disabled students.

 nottingham.edu.my/wellbeing

Faith provision

Prayer rooms are available 24 hours for Muslim students on the ground floor of the Computer Centre and Islamic Centre. The nearest mosque is in Semenyih and a free bus service is provided for Muslim students for Friday prayers. Buddhist, Christian and Hindu places of worship are located in Semenyih and our facilities are also available to support and host these activities.

Your perfect home

Finding the right place to live while you study is an important consideration in your choice of university. Our Accommodation Office offers a free and friendly service in helping you find a place to live that not only suits your needs but lets you get on with university life – both studying and having fun.



On-campus accommodation options

We offer various room types within our 11 halls of residence with total 2,400 beds to suit your budget. The rooms range from single ensuite, twin share to four shared bedrooms. All the halls are within easy walking distance to the academic buildings, sports facilities, food, retail and leisure facilities. Each residential hall has its own Hall Wardens (staff) and Hall Tutors (postgraduate students) who will be available to provide assistance related to your safety and welfare.

Facilities include:

- cleaning services
- communal student area (student village south J1-15)
- communal student hub*
- convenience store*
- laundromat
- mini fridge in each room*
- outdoor gym (student village north and south)
- pantry facilities
- room repair and maintenance services
- wireless internet connection

* only available in student village north J1-J6

Accommodation fees include utilities and internet connection. The room rental will be billed on a quarterly basis and students in rooms with air-conditioning will be billed on a quarterly basis for air-conditioning usage based on a meter reading.

Coin operator laundry washing machines and dryers are available at both Student Village North and South. Clothes line and drying areas are also available within the residential halls. Students can use the coin-operated launderette services at own expenses.

Find out more

- +60 3 8924 8604
- accommodation@nottingham.edu.my
- nottingham.edu.my/accommodation

Students with specific requirements

If you have a physical disability or have special needs, kindly indicate when applying via OLAA and provide written supporting documentation or medical reports from a registered physician/doctor. These will be forwarded to our Student Wellbeing and Learning Support Office for further advice and assessment. You may also indicate your room preference to be within an "All Female" hall of residence.

How to apply

New students may apply for on-campus accommodation as soon as you have your University student ID which is usually issued after you have submitted your programme application.

Current students who are progressing/continuing their studies (Returning Residents) are encouraged to apply in January (and accept with payment by end February) for the new academic year starting in September and

enjoy the option to request for the same room in the new academic year. Confirmation of your room is on first accepted with payment basis.

On-campus accommodation will be allocated to Returning Residents based on availability of a room and on a "first come first served with payment basis."

Room types

Room types	Rental per student
Deluxe single en-suite bathroom with air-conditioning	RM750 per month
Single en-suite bathroom with air-conditioning	RM680 per month
Single shared en-suite bathroom with air-conditioning	RM615 per month
Single shared bathroom in five room flat with air-conditioning	RM585 per month
Single shared en-suite bathroom	RM510 per month
Single shared bathroom in five room flat	RM480 per month
Twin shared in six bed flat	RM455 per month
Four shared bedroom	RM395 per month



As long as you have your Student ID, you can register with OLAA, the University's on-line accommodation application portal, which will allow you to:

- indicate your date and time of arrival
- manage your offer (accept, decline or apply for an extension)
- preview and select the various types of rooms available
- submit your application

OLAA will also provide you with other important information on how and when you can check-in.

Room Preferences and Allocation

Different room types are available to suit your budget and preference. Applicants must prioritise their choice of room type from 1 (first) to 5 (fifth). Accommodation Office cannot process your application if you selected less than five choices. Kindly be reminded that we follow a "first come first served with payment" policy to confirm the room type.

Apply here

applyaccommodation.nottingham.edu.my

In the event that you do not get your preferred room type, it is recommended that you accept what is been offered to prevent further delay. You will have the chance to change to your preferred room type by applying for room transfer after you have checked-in to the room offered to you. Your room transfer request will be processed according to room availability due to "No Show".

“Selamat Datang, Huān Yíng and Vanakkam!”

University of Nottingham Malaysia welcomes you to one of the most diverse nations in Asia.

Welcome to Malaysia

Covering an area of 127,350 square miles, Malaysia consists of two regions separated by the South China Sea: Peninsular Malaysia and Malaysian Borneo (also known as West and East Malaysia respectively). Peninsular Malaysia extends southeast from the border of Thailand. Malaysian Borneo consists of the states of Sabah and Sarawak which are located on the north-western coastal region of the island of Borneo. The country's population is over 30 million to date.

Malaysia is a country with a unique blend of cultural influences and ethnic groups. The country is home to three main ethnic groups: Malays, Chinese and Indians, as well as the native Orang Asli.

Having been colonised by the Portuguese, Dutch and British, see these influences in the architecture, hear them in Malay language and taste them in the internationally-acclaimed Malaysian cuisine. Visitors to Malaysia are also left awestruck by the tropical beauty of the country - with pristine beaches, some of the world's best underwater wildlife, ancient rainforests and UNESCO world heritage sites to explore, nature enthusiasts will find an exciting home in Malaysia.

The capital city

The Malaysia campus is a 45-minute drive away from Kuala Lumpur (KL), one of Asia's most vibrant cities. KL is a true metropolis with some of the world's tallest buildings, largest shopping havens and modern infrastructure. However, Kuala Lumpur also has pockets of historical sites, traditional villages (known as kampung) and greenery which are fun to explore on the weekends. The city is served by a comprehensive transportation system including buses, trains, a monorail and a number of airports.

Kuala Lumpur lies in the heart of Southeast Asia, and due to the number of low-cost and international carriers transiting in the country, it is an inexpensive starting point for travel around Southeast Asia and Australia.

International student support services

Our international student support service promotes the wellbeing and social interaction of international students. We provide invitations for visas and opening bank accounts, advice on any problems you have with living and studying in Malaysia and information on the professional support services available at the University.

Medical insurance

Medical insurance coverage is compulsory and arranged for you by International Student Support department. The coverage takes effect from the point of registration on campus.

 nottingham.edu.my/international/health-and-insurance

Student visa support

All non-Malaysian nationals who wish to study at an educational institution in Malaysia are required to hold a valid Student Pass. We assist international students in arranging dependant passes for spouse or family members, renewing the student visa while transferring schools within Malaysia and any other visa-related issues.

 apply.visa@nottingham.edu.my

Airport pick-up

We offer an airport pick-up service for new international students on designated days prior to the registration week. Email us at:

 international.support@nottingham.edu.my

Meet us

Members of the International Office frequently travel to different countries to meet with prospective students and their families. We also have overseas representatives in a number of countries who can help you find the right programme, and offer support and advice through the application process. If you would like to visit the University in person, we will be happy to arrange it for you.

 nottingham.edu.my/international/overseas

If you are an international student with a query about studying with us in Malaysia, please contact us:

 +60 3 8924 8686

 nottingham.edu.my/make-an-enquiry

 nottingham.edu.my/international

Our international campuses

During your time with us, you might have the chance to study at one of our campuses in the UK or China. All our campuses offer a warm and friendly environment, interesting landscapes and first-rate facilities.

Jubilee Campus, UK



University of Nottingham Ningbo China



UK campuses

University Park Campus

Set around a lake with beautifully kept gardens, the 330-acre University Park is the University's principal campus. Receiving Green Flag Award status every year since 2003, it is one of the most attractive campuses in the country and features a mixture of period buildings and modern teaching and research facilities, with 12 halls of residence, a conference and exhibition centre, sports facilities and Nottingham Lakeside Arts.

Jubilee Campus

Jubilee Campus opened in 1999 and is just one mile from University Park. It is an exemplar in sustainable brownfield regeneration and has won numerous awards for its environmentally friendly design. The modern, purpose-built buildings include teaching and research facilities, residences, retail, social and support amenities, libraries and a sports hall.

Aspire, one of the country's tallest free-standing works of public art, soars to 60 metres above the campus. The adjoining Innovation Park was launched in 2008 and continues to expand and evolve, hosting specialist facilities for global satellite navigation systems, renewable energy technologies, mental health research and aerospace technologies.

 nottingham.edu.my/campuses

Sutton Bonington Campus

Located in the beautiful countryside of south Nottinghamshire, Sutton Bonington Campus occupies a spacious 100-acre site with its own teaching and learning facilities, sports centre, student guild, social amenities and halls of residence.

Ten miles south of University Park, the campus benefits from state-of-the-art teaching and research facilities including purpose-built plant, food and nutrition science buildings, specialised laboratories, a 24-hour learning resource centre, extensive library, University farm and a dairy centre with 180 robotically milked cows. The campus also houses the School of Veterinary Medicine and Science which opened in 2006 as the first in Britain for more than 50 years.

China Campus

University of Nottingham Ningbo China

China campus became the first British university to establish and run a campus independently within mainland China when the first intake of students were admitted in 2004.

Around two-and-a-half hours by car from Shanghai, the China Campus is based at the Higher Education Park in Ningbo, a historic port city on China's eastern coast. The campus covers 144 acres of landscaped parkland, with a central lake and its own version of Nottingham's famous Trent Building. There are academic, residential and support facilities for almost 8,000 students including academic offices, a library, a fully equipped sports centre, a Students' Union, restaurants and shops.

Overseas opportunities

Nottingham has an extensive network of exciting exchange links. We offer life-enhancing opportunities to study abroad at our campuses in the UK and China as well as the chance to study for a period of time at partner universities across the globe.

Inter-campus exchange

As an undergraduate student, one unique feature of Nottingham Malaysia is the opportunity for you to spend one or two semesters during your second year of study at University of Nottingham UK, or University of Nottingham Ningbo China, while paying Malaysia Campus tuition fees. Participation is subject to the programme or programme being taught at our international campuses – please check with the relevant faculty about the programmes available.

Universitas 21/partner university exchanges

The Universitas 21/partner university exchange is a competitive programme that offers undergraduate students the opportunity to study at a partner university for one semester or one academic year as part of their Nottingham degree. To be eligible you must have completed one year of your degree at Nottingham Malaysia and achieved a minimum pass mark of 60%. You must also be taking a degree programme that is also offered at the host university. Current host universities include:

- Aarhus University, Denmark
- Bocconi University, Milan Italy
- Chungbuk National University, Korea
- Concordia University, Canada
- Korea Advanced Institute of Science and Technology (KAIST)
- Munich University of Applied Science, Germany
- National Taiwan University
- Sciences Po Toulouse, France
- Shiga University Japan
- Tech De Monterrey, Mexico
- The University of Groningen, The Netherlands
- Universidad Del Desarrollo, Chile
- University of Birmingham, UK
- University of Glasgow, UK
- University of Queensland, Australia

 nottingham.edu.my/studyabroad/byschool

Jubilee Campus, UK



China Campus

University Park Campus, UK



If you are registered for your degree programme at University of Nottingham Malaysia, you can access opportunities to study for a period of time outside of Malaysia. Some of our programmes include compulsory periods at our UK campus.

Inter-campus transfer programme

Students registered at the Malaysia Campus are also eligible to transfer to University of Nottingham UK or University of Nottingham Ningbo China after at least one year at the Malaysia Campus, provided there is space and students meeting the requirements.


International Summer Schools

Two-week programmes, based at our campuses in the China and Malaysia, will provide you with the opportunity to study something new while meeting people from all over the world, and learning about different cultures. You will be taught by world-class academics, take part in exciting cultural and social activities, and form new friendships lasting a lifetime. The Summer Schools are open to anyone who fulfils the academic entry requirements.

China: nottingham.edu.cn/international/summer
 Malaysia: nottingham.edu.my/international/summer

David Ross Sports Village



 +60 3 8924 8193/8036/8684/8750

 international.support@nottingham.edu.my

 nottingham.edu.my/studyabroad

RM15 million worth of scholarships

We grant RM15 million worth of scholarships to deserving and academically excellent students. Applicants are selected based on their academic achievements and the socio-economic status of their family. In addition, there are various sources of financial assistance available to help fund your education.

Full scholarships

The Star Education Fund

The University pledges several scholarships via The Star Education Fund for foundation and undergraduate programmes of study for Malaysian students only. Visit The Star for details:

 thestar.com.my

Sin Chew Daily Education Fund

This fund offers several full scholarships for undergraduate programmes for Malaysian only. Visit Sin Chew for details:

 sinchew.com.my

Partial scholarships

25% High Achievers' Scholarship

This is an automatic scholarship for foundation and undergraduate programmes of study to all students. Students who meet the criteria will receive 25% discount on the first year of their tuition fees.

25% Dean's Excellence Scholarship

This scholarship entitles top achieving students a discount of 25% in their tuition fees at the point of progression.

10% Automatic scholarships

We offer several automatic scholarships for alumni of University of Nottingham, children of alumni, siblings, spouses and alumni of Universitas 21 (U21) institutions.

Sports and Arts Scholarship

This scholarship is to acknowledge students' excellence in sports/arts to reward amateur athletes/artistic talent at national or international level, one award a year.

Scholarships will be divided into two categories:

- 50% discount for national level
- 75% discount for international level

All current students are eligible to apply for these scholarships, however, it cannot be backdated.

Not applicable to BSc Computer Science with Artificial Intelligence and Master of Pharmacy (MPharm)

Partial scholarships for Malaysian students

50% Tinggi Foundation Scholarship

Tinggi Foundation offers 50% scholarships from semester 2 onwards to deserving Malaysian students in undergraduate programmes (except MPharm and Computer Science with Artificial Intelligence).

February intake students (if they are considered) will only get the scholarship from their Year 2 until completion of undergraduate course.

Other finance options

Other finance options for undergraduate students include:

- Employees Provident Fund (EPF) withdrawal scheme for education – for Malaysian students pursuing diploma and higher level
- National Higher Education Fund (PTPTN loan) – for Malaysian students doing undergraduate programmes only

Students with outstanding academic results can also seek sponsorship from other sponsoring bodies. More information on sponsoring bodies can be found at our website.

 +60 3 8924 8052/8665/8063

 sponsorship@nottingham.edu.my

 nottingham.edu.my/scholarships



See for yourself

Open days

Each year we run open days, information days and counselling sessions where you can visit our campus, experience our facilities, meet students and staff, attend talks and presentations as well as participate in activities.

Some faculties and schools also run their own open days throughout the year.



Independent visits

You are welcome to arrange a visit to the campus and meet our staff for more information. Please contact us to arrange for a visit.

 nottingham.edu.my/make-an-enquiry

Education fairs

We participate in a number of education fairs throughout the year all over Malaysia. You can talk to our staff to find out the University and our programmes.

 nottingham.edu.my/study/events

Meet us in your country

Members of our International Office visit many countries to meet prospective students and attend international exhibitions. We also work with a number of international academic services, educational agencies and counsellors in countries across the globe.

These agents and counsellors can help you to find the right programme, providing support and advise throughout the application process.

 nottingham.edu.my/overseasrepresentatives



Foundation programmes

Arts and Education	40
Business and Management	40



Prove it



Realise it



Investigate it



Apply it



Foundation programmes



Overview

At the University of Nottingham Malaysia, we offer four foundation programmes: Arts and Education, Business and Management, Engineering and Science. These are an ideal entry pathway for our degree programmes and will provide you with the academic skills and confidence to further your education. Upon successful completion of your foundation programme, progression to an undergraduate degree is automatic and unconditional.

While all foundation programmes have an English language component, each programme is designed to target the specific needs of the student. The Foundation in Science, for example, covers topics such as biology, computing, mathematics and psychology, whereas the Foundation in Arts focuses largely on language and communication skills. We will guide you through non-academic tutorials, and assist you on a one-to-one basis with personal or academic issues.

Two or three-semester programme

Each semester consists of 10-12 weeks of teaching and an additional one to three weeks of assessment. Your foundation route depends on your skills and the amount of formal education you have undertaken. The three-semester programme is ideal

if you have completed a minimum of 11 years of formal education, whereas the two-semester programme is suitable if you have completed at least 12 years of formal education but need to enhance your skills in order to undertake an undergraduate degree.

If you study for the three-semester programme, you will take all modules, and if you take the two-semester programme you will take all modules offered in the second and third semesters.

Progression opportunities

There are two foundation programmes within the Faculty of Arts and Social Sciences: Foundation in Arts and Education and Foundation in Business and Management. Each undergraduate degree in the faculty has its preferred foundation programme, with content tailored for that programme. In addition, alternative pathways are open to other degrees, should your academic interest change in the programme of your foundation year.

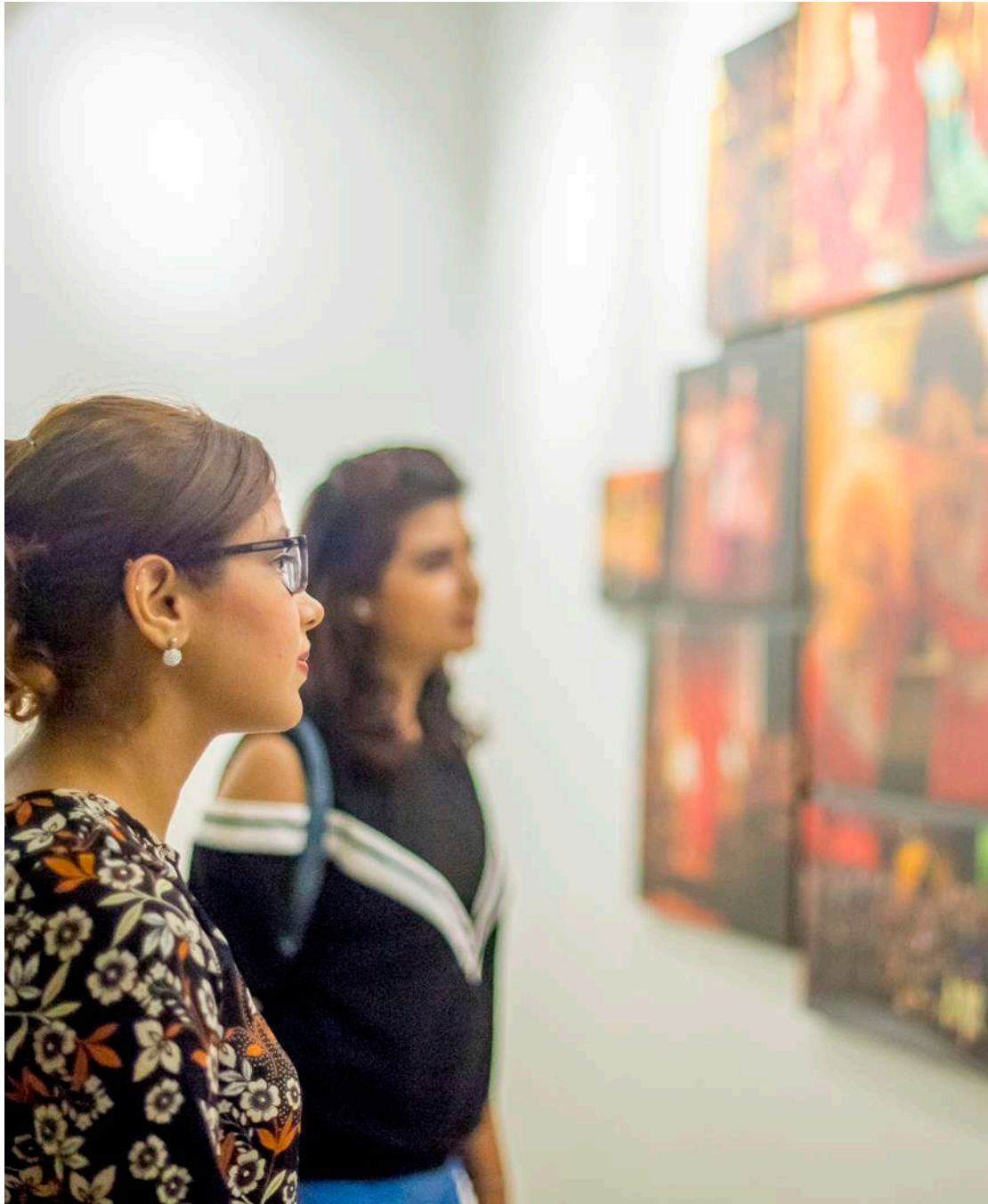
At a glance

- As a foundation student you will be a full member of the University and have access to all the opportunities, support and facilities on offer.
- Our programmes are carefully designed to prepare you for degree-level study and have a high rate of progression.
- Our foundation programmes are an opportunity to gain the skills and knowledge needed to undertake a range of bachelor degrees while studying at a world-class university.

All entry requirements, fees, school and programme information are intended as a guide and were accurate at the time of printing. For the most up to date information and further details of each programme please visit nottingham.edu.my/foundation

- +60 3 8924 8686
- nottingham.edu.my/make-an-enquiry
- UoNMalaysia
- UoNMalaysia
- nottingham.edu.my/foundation

Foundation	Duration	Intake	Malaysian fees	International fees
Arts and Education KPT/JPS(R/010/3/0393)3/21	2 or 3 semesters full-time	April and June (3 semester), September (2 and 3 semester)	RM7,800 per semester	RM9,500 per semester
Business and Management KPT/JPS(R/010/3/0392)2/21	2 or 3 semesters full-time	April and June (3 semester), September (2 and 3 semester)	RM7,800 per semester	RM9,500 per semester



Entry requirements	English language requirements
Arts and Education	IELTS (Academic): 6.0 (with no less than 5.5 in each element)
3-Semester Entry	TOEFL (iBT): 79 (minimum 17 in Writing and Listening, 18 in Reading, 20 in Speaking)
SPM/GCSE/IGCSE	PTE (Academic): 55 (with no less than 51 in each element)
IB Middle Years Programme (IB MYP)	SPM: grade B+
Canadian Ontario Grade 11 Secondary School	1119 (GCE O): grade C
2-Semester Entry	GCSE O-Level: grade C
A Level	IGCSE (First Language): grade C
AS Level	IGCSE (Second Language): grade B
STPM	IB MYP: 4
UEC	MUET: Band 3
IB Diploma	UEC: grade B3
SAM or other Australian Matriculations	Applicants who are planning to progress to undergraduate programmes offered by Nottingham University Business School must have at least grade B in mathematics at SPM/ GCSE/ IGCSE High School Diploma or equivalent.
Canadian Ontario Grade 12 Secondary School Diploma (OSSD)	Applicants who have successfully completed 12 years of education (definitions will vary according to school system) and meet the entry requirements for the programme, may be eligible to apply for the 2-Semester entry. Acceptance is at the discretion of the University.
High School Diploma (US Style Curriculum)	

Students who do not meet these entry requirements may be considered on a case-by-case basis. Please see our entry requirement guidelines on page 76.

Entry requirements	English language requirements
Business and Management	
3-Semester Entry	
SPM/GCSE/IGCSE	5 Bs including mathematics, excluding moral studies and religious studies. Consideration to be made based on relevant subjects.
IB Middle Years Programme (IB MYP)	5, 5, 5, 5, 5 including mathematics, excluding Personal Project. Consideration to be made based on relevant subjects.
Canadian Ontario Grade 11 Secondary School	70% average with 75% in relevant academic subjects. Canadian Grade 11 from other provinces are acceptable and to be assessed based on the University's requirements.
2-Semester Entry	
A Level	CCC, excluding critical thinking and general studies.
AS Level	BBB, excluding critical thinking and general studies.
STPM	BBB, excluding Pengajian Am.
UEC	4 B3s and 1 B4, including mathematics, excluding Bahasa Malaysia and Chinese language.
IB Diploma	24 points with 4,4,4 at Higher Level, including mathematics.
SAM or other Australian Matriculations	ATAR 74 (consideration to be made based on relevant subjects).
Canadian Ontario Grade 12 Secondary School Diploma (OSSD)	70% average based on 6 subjects with at least 60% in mathematics of data management. Canadian Secondary School Diplomas from other provinces are acceptable and to be assessed based on the University's requirements.
High School Diploma (US Style Curriculum)	Minimum final GPA 3.0 (out of 4) with Grade B in mathematics or pre-calculus in grade 11 or grade 12.

Students who do not meet these entry requirements may be considered on a case-by-case basis. Please see our entry requirement guidelines on page 76.

In addition to the entry requirements listed above, those who have taken SPM/ GCSE/ IGCSE High School Diploma or equivalent must have grade B in mathematics.

Applicants who have successfully completed 12 years of education (definitions will vary according to school system) and **meet the entry requirements** for the programme, may be eligible to apply for the 2-Semester entry. Acceptance is at the discretion of the University.

Foundation in Arts and Education

The Foundation in Arts and Education provides an entry route for degree programmes offered by the Faculty of Arts and Social Sciences, especially English, Education, International Communications Studies and International Relations. Considerable content is devoted to oral and written communication, critical thinking and study skills, while other modules will give a grounding in subject-specific content. You will be taught in innovative ways designed to help you to think issues through for yourself. This interactive and student focused teaching style will help you to become an independent and active learner. You will take part in lectures, seminars and workshops and follow a similar timetable to a typical undergraduate. Assessment is through exams, coursework essays, portfolios and oral presentations.

First Semester

Typical core modules

- Communication Networks
- Contemporary Global Issues
- Computer Basics and Operations Decisions

Second Semester

Typical core modules

- Communication and Culture
- Critical Thinking and Study Skills

Typical optional modules (choose any two)

- Elementary Economics and Mathematical Skills
- English for Academic Purposes
- Foundations in Language and Literature
- Introduction to Law
- Oral Communication for Academic Purposes
- Social Sustainability

Third Semester

Typical core modules

- Basic Concepts of Politics and Philosophy
- Principles of Education

Typical optional modules (choose any one)

- Business Accounting
- Quantitative Methods for Business

or

Typical optional modules (choose any two)

- Basic Principles of Applied Psychology
- Communications Politics and Media
- Fundamentals in Economics
- The World Economy

Foundation in Business and Management

The Foundation in Business and Management will help you develop into an independent learner and ease your progress onto undergraduate study. The programme provides an entry route to degree programmes offered by the Faculty of Arts and Social Sciences, especially in Business, Education, International Communications Studies and International Relations. Lectures are typically two to three hour sessions which will familiarise you with the subject's main theoretical concepts and ideas. In addition, tutorials, seminars and workshops are conducted so you can apply theoretical concepts to practical issues, participate in class discussions and improve your presentation skills. Lab work, presentations and assignments will be key parts of your learning experience and assessment. All core modules are compulsory, while you can select optional modules relating to your preferred undergraduate programme.

First Semester

Typical core modules

- Computer Basics and Operations Decisions
- Contemporary Global Issues
- Introduction to Social Science

Second Semester

Typical core modules

- Business and Management in a Global Context
- Critical Thinking and Study Skills
- Elementary Economics and Mathematical Skills

Typical optional modules (choose any one)

- Foundations in Language and Literature
- Introduction to Law
- Oral Communication for Academic Purposes
- Social Sustainability

Third Semester

Typical core modules

- Business Accounting
- Fundamentals in Economics
- Quantitative Methods for Business

Typical optional modules (choose any one)

- Basic Principles of Applied Psychology
- Communications Politics and Media
- English for Academic Purposes
- The World Economy

Pathways for progression

Arts and Education

Primary programmes for progression

Education (TESOL) (BA)
 Education (TESOL) (BEd)
 English Language and Literature (BA)
 English with Creative Writing (BA)
 International Communication Studies (BA)
 International Communication Studies with English Language and Literature (BA)
 International Communication Studies with Film and Television Studies (BA)
 International Relations (BA)
 International Relations with French/Spanish (BA)

Alternative pathways for progression (strong level of maths required)

Applied Psychology and Management (BSc)
 Business Economics and Finance (BSc)
 Business Economics and Management (BSc)
 Finance, Accounting and Management (BSc)
 International Business Management (BSc)
 Management (BSc)
 Psychology (BSc)
 Psychology and Cognitive Neuroscience (BSc)

Business and Management

Primary programmes for progression

Applied Psychology and Management (BSc)
 Business Economics and Finance (BSc)
 Business Economics and Management (BSc)
 Economics (BSc)
 Economics and International Economics (BSc)
 Finance, Accounting and Management (BSc)
 International Business Management (BSc)
 Management (BSc)

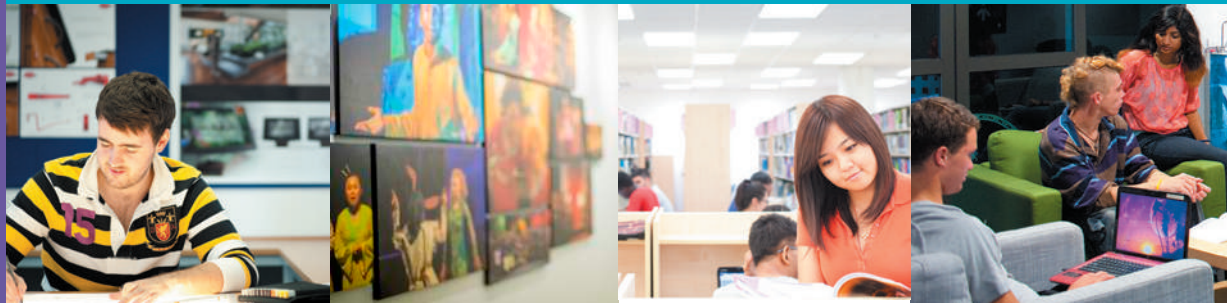
Alternative pathways for progression

Education (TESOL) (BA)
 Education (TESOL) (BEd)
 International Communication Studies (BA)
 International Communication Studies with English Language and Literature (BA)
 International Communication Studies with Film and Television Studies (BA)
 International Relations (BA)
 International Relations with French/Spanish (BA)
 Psychology (BSc)
 Psychology and Cognitive Neuroscience (BSc)



Arts and Social Sciences

Applied Psychology	44
Business	47
Economics	55
Education	58
English	61
Media, Languages and Cultures	64
Politics, History and International Relations	70



Applied Psychology



What is applied psychology?

Applied psychology is the application of psychological science, theory, and principles to problems of everyday life. It has become influential in almost all aspects of society, where applied psychologists work to improve people's lives and help clients achieve their goals and objectives. In essence, applied psychologists are interested in people and seek to understand human behaviour and thought processes. More importantly, they are interested in how individuals interact with the various cultural, physical, social and societal systems that characterise human life.

The BSc Applied Psychology and Management combines applied psychology with the study of core areas of contemporary business and management, providing you with an excellent foundation to enter careers in psychology and business.

How will I study?

In the first year you are introduced to the underlying core management disciplines of accounting, economics and finance and the psychology of the individual and their relationship with the business world, as well as research methods in applied psychology. In the second year, you take modules in more advanced subjects in accounting, economics, and research methods

while learning about the psychology of culture, groups and society, and other applications of individual psychology. In the final year, you will take further modules on human resource management, strategy and more advanced modules in work psychology, and embark on an applied research project.

Career prospects

Applied psychology and management offers an added value not met by graduates from a single-subject background due to the integration of a psychological perspective. It will prepare you for international careers with a strong human element in government agencies, industry and other types of organisations, such as charities, consultancies and non-governmental organisations. Applied psychologists in business are valued and respected within their various areas of expertise, particularly in the fields of advertising, career and organisational development, change management, counselling, human resources, marketing, occupational testing, selection and recruitment, and training. They often collaborate with other experts in business and their contribution is highly sought-after.

At a glance

- Applied Psychology and Management provides excellent training for a future career in psychology and business, and will enable you to apply psychological theories and principles to real-world situations.
- Our modules are the perfect complement to business and management as they teach you to ask the right questions and use scientific evidence to analyse and provide answers to problems.
- You will gain skills that are highly sought-after by employers such as the ability to analyse and interpret evidence, the application of research methods, effective communication, problem-solving, teamwork and time management.

All entry requirements, fees, school and programme information are intended as a guide and were accurate at the time of printing. For the most up to date information and further details of each programme please visit nottingham.edu.my/ugstudy

- +60 3 8924 8686
- nottingham.edu.my/make-an-enquiry
- UoNMalaysia
- UoNMalaysia
- nottingham.edu.my/appliedpsychology

BSc (Hons)	Duration	Intake	Malaysian fees	International fees
BSc Applied Psychology and Management KPT/JPS (R/345/6/0884)3/21	3 years full-time	September	RM36,000 per year	RM42,000 per year

Entry requirements	English language requirements
A Level	BBB, excluding critical thinking and general studies.
IB Diploma	30 points with 5, 5, 5 at Higher Level and 5 points in mathematics at Standard or Higher Level.
STPM	B+B+B+, excluding Pengajian Am.
UEC	2 As and 3 B3s, excluding Bahasa Malaysia and Chinese language.
SAM or other Australian Matriculations	ATAR 86 (consideration to be made based on relevant subjects).
Canadian Ontario Grade 12 Secondary School Diploma (OSSD)	80% average based on 6 subjects with at least 70% in Mathematics of Data Management. Canadian Secondary School Diplomas from other provinces are acceptable and to be assessed based on the University's requirements.
Advance Placement (AP)	4, 4, 4 in relevant subjects. Applicants taking non-preferred subjects may be made an offer across more than three subjects at Advanced Placement level.
Diploma - Other Institutions	Acceptance to the second year is on a case by case basis (and at the discretion of the School) but normally would require an overall GPA of 3.3 (out of 4) or 70% and above (consideration to be made based on relevant subjects), and previous studies must meet the prerequisite requirements to the programme.
Foundation - Other Institutions	Acceptance is at the discretion of the School but normally would require an overall GPA of 3.3 (out of 4) or 70% and above (consideration to be made based on relevant subjects), and previous studies must meet the prerequisite requirements to the programme.
University of Nottingham Malaysia Foundation	Successful completion of any foundation programme and meeting mathematics requirements.
In addition to the entry requirements listed above, those who have taken SPM/ GCSE/ IGCSE/ High School Diploma or equivalent must have grade B in mathematics or grade C in UEC mathematics.	IELTS (Academic): 6.5 (with no less than 6.0 in each element) TOEFL (iBT): 87 (minimum 20 in Speaking and 19 in all other elements) PTE (Academic): 62 (with no less than 55 in each element) GCE A Level English Language or English Literature: grade C GCE AS Level English Language or English Literature: grade C SPM: grade A- 1119 (GCE O): grade B GCSE O-Level: grade C IGCSE (first language): grade C IGCSE (second language): grade B MUET: Band 4 UEC: grade A2 IB English A1 or A2 (Standard or Higher Level): 4 points IB English B (Higher Level): 4 points IB English B (Standard Level): 5 points

Students who do not meet these entry requirements may be considered on a case-by-case basis. Please see our entry requirement guidelines on page 76.

Related programmes

BSc Business Economics and Management (page 52)
 BSc Finance, Accounting and Management (page 53)
 BSc International Business Management (page 53)
 BSc Management (page 54)

(Undergraduate Prospectus Science and Engineering)

BSc Psychology (page 89)
 BSc Psychology and Cognitive Neuroscience (page 89)

BSc Applied Psychology and Management

This programme is a joint honours degree offered in conjunction with Nottingham University Business School, and the first of its kind to be offered in Malaysia. It provides excellent training for a future career in psychology and/or business and will teach you to apply psychological theories and principles to real-world settings. By combining applied psychology with core areas of management, you will learn to interpret human behaviour, analyse social interactions and develop an evidence-based approach to problem solving. You will develop an inquisitive mind, superior social skills and a practical business orientation which will prepare you for a successful career in industry and beyond.

Year one

Typical core modules

- Applied Research Methods
- Business Economics
- Entrepreneurship: Theory and Practice
- Fundamentals of Financial and Management Accounting
- Introduction to Applied Psychology
- People, Work and Organisations
- Psychology of Individual Differences

Year two

Typical core modules

- Advanced Research Methods
- Applied Social and Cultural Psychology
- Human Resource Management with International Perspectives
- International Business
- Marketing Management
- Psychology of Learning

Typical optional modules

- Branding and Advertising
- Contemporary Issues in Psychology
- Corporate Entrepreneurship and Innovation
- Developmental Psychology
- Introduction to Counselling

Year three

Typical core modules

- Business Ethics and Sustainability
- Research Project in Applied Psychology
- Strategic Management

Typical optional modules

- Cross Cultural Management
- Marketing and Society
- Occupational Health Psychology
- Selection and Training in Organisations



At a glance

- As a leading centre for management education, Nottingham University Business School (NUBS) is renowned for world-class research and teaching, and in the latest UK Research Excellence Framework we ranked among the top six business schools in the UK for research power.
- We are part of an elite global group that has gained European Quality Improvement System (EQUIS) accreditation – proof not only of our high standards but also of our commitment to internationalisation.
- We draw on our global presence to enhance business and management knowledge while offering a unique insight into Asian business growth and development.

All entry requirements, fees, school and programme information are intended as a guide and were accurate at the time of printing. For the most up to date information and further details of each programme please visit nottingham.edu.my/ugstudy

- +60 3 8924 8686
- nottingham.edu.my/make-an-enquiry
- NUBSMalaysia
- @NUBSMalaysia
- nottingham.edu.my/business

Business

What is business and management?

All programmes in Nottingham University Business School involve the study of organisations, their management and the changing external environment in which they operate. While the exact blend of subjects studied depends on the particular programme, each degree prepares you for a career in business and management and allows you to develop skills in qualitative and quantitative analysis, critical thinking, oral and written presentation, information technology and group working.

How will I study?

Our programmes enable you to either opt for a broad-based management education or to specialise in a particular aspect of management. All programmes have been carefully designed to allow you to acquire the fundamentals of management and the most recent trends in business thinking. Combining studies in accounting, economics, finance, management and marketing, the interdisciplinary nature of our programmes will provide you with the competitive edge to pursue a career in any line of business.

Professional accreditation

Nottingham University Business School is among the top 6 business schools in the UK for research power. Uniquely, the EQUIS accreditation applies to all our campuses in the UK, China and Malaysia. In addition to EQUIS, some of our degree programmes are also accredited by several major professional accountancy bodies. The exemptions that are available from professional examination papers set by these bodies vary depending on the degree programme.

The BSc Finance, Accounting and Management programme is accredited by the Association of Chartered Certified Accountants (ACCA), the Chartered Institute of Management Accountants (CIMA), the Institute of Chartered Accountants in England and Wales (ICAEW) and CPA Australia.

The BSc Management programme is accredited by the Chartered Institute of Marketing (CIM).

Career prospects

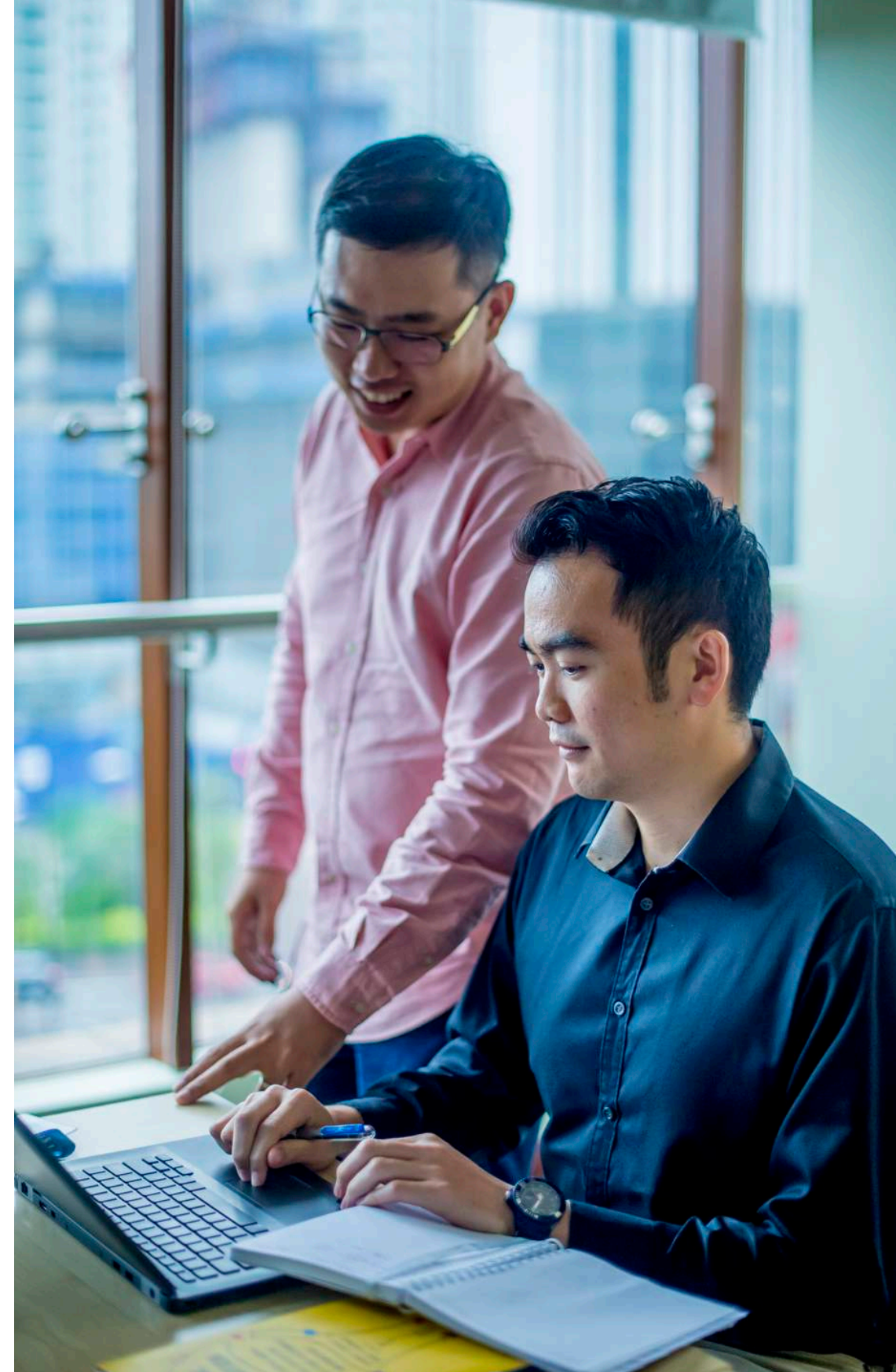
Our interdisciplinary approach to business education will enable you to have a head start in a wide spectrum of careers. Many of our graduates have secured prestigious jobs in multinational corporations. Some of our graduates have become auditors, entrepreneurs, executives in the banking and financial services industry and industry regulators. Other career options include academia, investment research, management consultancy, risk management and other service-oriented professions.



BSc (Hons)	Duration	Intake	Malaysian fees	International fees
BSc Business Economics and Finance KPT/JPS(R/340/6/0629)03/21	3 years full-time	February and September	RM37,000 per year	RM45,500 per year
BSc Business Economics and Management KPT/JPS(R/340/6/0628)3/21	3 years full-time	September	RM37,000 per year	RM45,500 per year
BSc Finance, Accounting and Management UNM/KPM-JPT(R2/340/6/0514)9/24	3 years full-time	February and September	RM37,000 per year	RM45,500 per year
BSc International Business Management KPT/JPS(R/345/6/0883)3/21	3 years full-time	September	RM37,000 per year	RM45,500 per year
BSc Management UNM/KPM-JPT(R2/345/6/0712)9/24	3 years full-time	September	RM37,000 per year	RM45,500 per year

Entry requirements		English language requirements
A Level	BBB, excluding critical thinking and general studies.	IELTS (Academic): 6.5 (with no less than 6.0 in each element)
IB Diploma	30 points with 5, 5, 5 at Higher Level and 5 points in mathematics at Standard or Higher Level.	TOEFL (iBT): 87 (minimum 20 in Speaking and 19 in all other elements)
STPM	B+B+B+, excluding Pengajian Am.	PTE (Academic): 62 (with no less than 55 in each element)
UEC	2 As and 3 B3s, excluding Bahasa Malaysia and Chinese language.	GCE A Level English Language or English Literature: grade C
SAM or other Australian Matriculations	ATAR 86 (consideration to be made based on relevant subjects).	GCE AS Level English Language or English Literature: grade C
Canadian Ontario Grade 12 Secondary School Diploma (OSSD)	80% average based on 6 subjects with at least 70% in Mathematics of Data Management. Canadian Secondary School Diplomas from other provinces are acceptable and to be assessed based on the University's requirements.	SPM: grade A-
Advance Placement (AP)	4, 4, 4 in relevant subjects. Applicants taking non-preferred subjects may be made an offer across more than three subjects at Advanced Placement level.	1119 (GCE O): grade B
Diploma - Other Institutions	Acceptance to the second year is on a case by case basis (and at the discretion of the School) but normally would require an overall GPA of 3.3 (out of 4) or 70% and above (consideration to be made based on relevant subjects), and previous studies must meet the prerequisite requirements to the programme.	GCSE O-Level: grade C
Foundation - Other Institutions	Acceptance is at the discretion of the School but normally would require an overall GPA of 3.3 (out of 4) or 70% and above (consideration to be made based on relevant subjects), and previous studies must meet the prerequisite requirements to the programme.	IGCSE (first language): grade C
University of Nottingham Malaysia Foundation	Successful completion of any foundation programme and meeting mathematics requirements.	IGCSE (second language): grade B
		MUET: Band 4
		UEC: grade A2
		IB English A1 or A2 (Standard or Higher Level): 4 points
		IB English B (Higher Level): 4 points
		IB English B (Standard Level): 5 points

Students who do not meet these entry requirements may be considered on a case-by-case basis. Please see our entry requirement guidelines on page 76.





BSc Business Economics and Finance

This degree allows you a greater specialisation in finance, offering the key elements of Business Economics. You will study core business and economics modules and take additional modules related to finance. You will gain an in-depth understanding of the core areas of economics and finance, such as derivatives pricing, economics of regulation, industrial economics and corporate restructuring. This programme will provide you with an excellent background for specialist quantitatively orientated careers in financial economics and research, as well as those in the areas of accountancy, banking, finance and management.

Year one

Typical core modules

- Business Finance
- Computers in Business
- Fundamentals of Financial and Management Accounting
- Introduction to Economics
- Microeconomics for Business
- Organisational Behaviour
- Quantitative Methods 1b
- Work and Society

Plus, approved optional modules (must include Quantitative Methods 1a for students without a Grade C in A-Level Mathematics or equivalent)

Year two

Typical core modules

- Corporate Finance
- Industrial Economics I: Economics of Organisation and Innovation
- Industrial Economics II: Pricing and Decision Making
- Introductory Econometrics
- Quantitative Methods 2a

Plus approved optional modules

Year three

Typical core modules

- Business Ethics and Sustainability
- Economics of Regulation and Public Choice
- Financial Economics
- Financial Markets: Theory and Computation
- Industrial Economics III: Market Structure and Competition Policy
- Industrial Economics IV: Games and Strategies

Plus approved optional modules

Related programmes

BSc Applied Psychology and Management (page 46)
 BSc Economics (page 57)

BSc Business Economics and Management

Throughout this degree, you will study core business economics modules and modules related to management. With an emphasis on theoretical and applied microeconomics, you will gain the ability to analyse the economic and social environment in which economic decisions faced by managers and businesses are taken. You will develop an awareness of business and financial environments and current business issues, as well as an understanding of modern economics ideas and their relevance to business and financial decision-making.

Year one

Typical core modules

- Business Finance
- Computers in Business
- Fundamentals of Financial and Management Accounting
- Introduction to Economics
- Microeconomics for Business
- Organisational Behaviour
- Quantitative Methods 1b
- Work and Society

Plus, approved optional modules (must include Quantitative Methods 1a for students without a Grade C in A-Level Mathematics or equivalent)

Year two

Typical core modules

- Firm Strategy and Internationalisation
- Industrial Economics I: Economics of Organisation and Innovation
- Industrial Economics II: Pricing and Decision Making
- International Business Strategy
- Introductory Econometrics
- Quantitative Methods 2a

Plus approved optional modules

Year three

Typical core modules

- Business Ethics and Sustainability
- Economics of Regulation and Public Choice
- Industrial Economics III: Market Structure and Competition Policy
- Industrial Economics IV: Games and Strategies
- Strategic Management

Plus approved optional modules

BSc Finance, Accounting and Management

This might well be amongst the most sought-after qualifications in the Business School as it is underpinned by a variety of other disciplines to run a corporation. Here, you will learn to utilise the theoretical and practical techniques of finance and accounting within an economic, organisational and decision-making framework. You will also develop a critical understanding of the techniques and their contexts. By completing the programme, you will be well-equipped to undertake professional examinations in accounting.

Year one

Typical core modules

- Business Finance
- Business Law
- Computers in Business
- Economic Principles
- Fundamentals of Financial and Management Accounting
- Organisational Behaviour
- Professional and Academic Development
- Quantitative Methods 1b

Plus approved optional modules (must include Quantitative Methods 1a for students without a Grade C in A-Level Mathematics or equivalent)

Year two

Typical core modules

- Accounting Information Systems
- Corporate Finance
- Intermediate Corporate Reporting
- Introductory Econometrics
- Management Accounting
- Management Strategy
- Quantitative Methods 2a

Plus approved optional modules

Year three

Typical core modules

- Advanced Corporate Reporting and Analysis
- Advanced Management Accounting
- Business Ethics and Sustainability
- Financial Markets: Theory and Computation

Plus approved optional modules

BSc International Business Management

We are aware of the fundamental need to create new managers for a new world. Focusing on international business strategy and globalisation, you will be exposed to a range of general management subjects, such as accounting, business information technologies, economics, finance and quantitative methods. A special emphasis is placed on business and management in an international context, including the particular cultural, legal and political conditions affecting business in Asia and European countries. Students on this programme frequently choose to take optional modules in international communications studies and international relations, complementing the business focus of the core curriculum.

Year one

Typical core modules

- Business Economics
- Consumers and Markets
- Entrepreneurship: Theory and Practice
- Fundamentals of Financial and Management Accounting
- Managing Operations in the Digital Enterprise
- Organisational Behaviour
- Quantitative Methods 1b
- Work and Society

Plus, either Quantitative Methods 1a (compulsory for students without a Grade C in A-Level Mathematics or equivalent) or Professional and Academic Development (compulsory for all other students)

Year two

Typical core modules

- Firm Strategy and Internationalisation
- Human Resource Management with International Perspectives
- International Business
- Managing the Responsible Business
- Marketing Management
- Technology and Organisation

Plus approved optional modules

Year three

Typical core modules

- Business Ethics and Sustainability
- Cross Cultural Management
- Finance in the Global Market
- New Venture Creation
- Strategic Management

Plus approved optional modules

BSc Management

Our management programme will provide you with a broad-based but rigorous grounding in a range of management principles. You will learn to apply a theoretical understanding of organisational accounting, analysis and economics to a range of management subjects including human resource management, marketing and strategy. We will also encourage you to be critical, show initiative and develop an awareness of the benefits and limitations of different approaches to management.

Year one

Typical core modules

- Business Economics
- Consumers and Markets
- Entrepreneurship: Theory and Practice
- Fundamentals of Financial and Management Accounting
- Managing Operations in the Digital Enterprise
- Organisational Behaviour
- Quantitative Methods 1b
- Work and Society

Plus, either Quantitative Methods 1a (compulsory for students without a Grade C in A-Level Mathematics or equivalent) or Professional and Academic Development (compulsory for all other students)

Year two

Typical core modules

- Human Resource Management with International Perspectives
- International Business
- Marketing Management
- Technology and Organization

Plus approved optional modules

Year three

Typical core modules

- Business Ethics and Sustainability
- New Venture Creation
- Strategic Management

Plus approved optional modules

The Business School's undergraduate degree programmes provide a well-rounded business education that will equip you with the knowledge and skills necessary to succeed in a global business environment.





At a glance

- Economics is the second highest paid degree in the UK, Institute for Fiscal Studies.
- Exceptional alumni including the late Sir Clive Granger, winner of the 2003 Nobel Prize in Economic Sciences.
- Exchange opportunities at the University's campuses in the UK or China or in locations such as Canada.
- Flexible programmes with broad range of modules.
- 2nd in the world in the field of Cognitive and Behavioural Economics, The Repec/IDEAS ranking.
- 4th in the UK for economics, The Guardian University Guide 2018

All entry requirements, fees, school and programme information are intended as a guide and were accurate at the time of printing. For the most up to date information and further details of each programme please visit nottingham.edu.my/ugstudy

- +60 3 8924 8686
- nottingham.edu.my/make-an-enquiry
- UoNMalaysia
- UoNMalaysia
- nottingham.edu.my/economics

Studying economics at Nottingham Malaysia

Established in 2010, Nottingham School of Economics Malaysia is an integral part of University of Nottingham's School of Economics, a top ranked economics department. We provide students with all the benefits of a world-class British education but in the dynamic setting of Malaysia. As the world looks East, our students are in the unique position to witness first-hand the extraordinary economic development taking place in Malaysia and regionally within ASEAN.

Our Economics degrees are among the few Bachelor of Science in Economics degrees offered in Malaysia. They combine the core analytical and quantitative techniques required by modern economics with in depth study of topical issues, informed by research active staff who are pushing forward the boundaries of the subject. Our academics are highly qualified with PhDs from renowned universities in North America, Europe and Australia, and have extensive international teaching and working experiences.

Good returns to studying economics

With rigorous training in data analysis, problem solving, report writing, oral presentations and teamwork, our graduates are highly sought after in the job market.

Economics

Economics graduates have an enviable flexibility to choose from a wide range of careers, including jobs in investment banks and management consultancies, and high-impact jobs with opportunities to shape policies in think tank and government agencies. The solid mathematical, quantitative and analytical skills that students acquire through an economics degree are very much sought after, making it one of the highest paid degrees in the market (according to the Institute for Fiscal Studies and the Hamilton Project).

Broad career options

Economics graduates from University of Nottingham Malaysia have been recruited by investment banks, commercial banks, multinational companies, government organisations, as well as policy institutes. In addition, a significant fraction of our graduates are pursuing their master and doctoral studies around the world, as our honours degree is recognised for entry into postgraduate programmes at internationally renowned universities.

We look forward to helping you to achieve your ambitions here at Nottingham Malaysia.

BSc (Hons)	Duration	Intake	Malaysian fees	International fees
BSc Economics UNM/KPM-JPT(R/2/314/6/0022)10/24	3 years full-time	September	RM36,000 per year	RM45,500 per year
BSc Economics and International Economics UNM/KPM-JPT(R/314/6/0023)9/24	3 years full-time	September	RM36,000 per year	RM45,500 per year

Entry requirements	English language requirements	
A Level	BBB, excluding critical thinking and general studies.	IELTS (Academic): 6.5 (with no less than 6.0 in each element)
IB Diploma	30 points with 5, 5, 5 at Higher Level and 5 points in mathematics at Higher level or 6 points at Standard Level.	TOEFL (iBT): 87 (minimum 20 in Speaking and 19 in all other elements)
STPM	B+B+B+, excluding Pengajian Am.	PTE (Academic): 62 (with no less than 55 in each element)
UEC	2 As and 3 B3s, excluding Bahasa Malaysia and Chinese language.	GCE A Level English Language or English Literature: grade C
SAM or other Australian Matriculations	ATAR 86 (consideration to be made based on relevant subjects).	GCE AS Level English Language or English Literature: grade C
Canadian Ontario Grade 12 Secondary School Diploma (OSSD)	80% average based on 6 subjects with 60% in Calculus and Vectors and 70% in Mathematics of Data Management. Canadian Secondary School Diplomas from other provinces are acceptable and to be assessed based on the University's requirements.	SPM: grade A-
Advance Placement (AP)	4, 4, 4 in relevant subjects. Applicants taking non-preferred subjects may be made an offer across more than three subjects at Advanced Placement level.	1119 (GCE O): grade B
Diploma - Other Institutions	Acceptance is at the discretion of the School but normally would require an overall GPA of 3.3 (out of 4) or 70% and above (consideration to be made based on relevant subjects), and previous studies must meet the prerequisite requirements to the programme.	GCSE O-Level: grade C
Foundation - Other Institutions	Acceptance is at the discretion of the School but normally would require an overall GPA of 3.3 (out of 4) or 70% and above (consideration to be made based on relevant subjects), and previous studies must meet the prerequisite requirements to the programme.	IGCSE (first language): grade C
University of Nottingham Malaysia Foundation	Successful completion of any foundation programme and meeting mathematics requirements.	IGCSE (second language): grade B
In addition to the entry requirements listed above, those who have taken SPM/ GCSE/ IGCSE/ High School Diploma or equivalent must have grade A- in mathematics.		MUET: Band 4
		UEC: grade A2
		IB English A1 or A2 (Standard or Higher Level): 4 points
		IB English B (Higher Level): 4 points
		IB English B (Standard Level): 5 points

Students who do not meet these entry requirements may be considered on a case-by-case basis. Please see our entry requirement guidelines on page 76.

Related programmes

- BSc Business Economics and Finance (page 52)
- BSc Business Economics and Management (page 52)

For more information about our programmes, visit nottingham.edu.my/ugstudy

BSc Economics

Offering you the flexibility to tailor your module choice to your interests, this programme provides a solid grounding in a wide range of techniques and skills sought after by employers. Macroeconomics, microeconomics, mathematics and statistics form the core of the degree. You will have the flexibility to select modules offered by other schools across the University.

Year one

Providing you with a solid grounding in introductory economic theory and mathematics/statistics, your first year of study will focus on the relevance of such methods to the study of economic questions of cultural, political and social importance.

Typical core modules

- Introduction to Macroeconomics
- Introduction to Microeconomics
- Quantitative Economics

Typical optional modules

- Economic Integration 1 and 2

Year two

You will develop your analytical skills and knowledge of the core disciplines of economics and quantitative methods, as well as the major sub-disciplines of economics. You can apply to spend a semester on exchange.

Typical core modules

- Applied Econometrics 1 and 2
- Macroeconomic Theory
- Microeconomic Theory

Typical optional modules

- Development Economics
- Experimental and Behavioural Economics
- Financial Economics
- International Trade

Year three

In your final year you will examine the major themes in economics at an advanced level and build on the topics covered in previous years. Under the guidance of an academic, you'll also undertake a year-long dissertation on a topic of your choice and will gain experience of the research process.

Typical core modules

- Economics Dissertation

Typical optional modules

- Advanced Development Economics
- Advanced Experimental and Behavioural Economics
- Advanced Financial Economics
- Advanced International Trade 1 and 2
- Advanced Microeconomics
- International Money and Macroeconomics
- Topics in Econometrics

BSc Economics and International Economics

Following a similar structure to BSc Economics, this programme is particularly suitable if you are interested in studying international trade and international aspects of financial economics. It will provide you with core training in economics, combined with a special focus on a range of aspects of international economics, including international trade and monetary economics, in which the school has a worldwide reputation. Modules in international economics form a significant element of this programme, but there is also ample opportunity to take modules offered by other schools in the University. As a graduate, you will have a thorough knowledge of economic theory and how it is applied to the real world, particularly in relation to international trade, monetary economics and globalisation. You will also be familiar with the key analytical techniques that economists use in practice.

Year one

In your first year, you will study the core of BSc Economics with additional modules in the economics of integration, focusing on the key principles and the largest customs union in the world: the European Union.

Typical core modules

- Economic Integration 1 and 2
- Introduction to Macroeconomics
- Introduction to Microeconomics
- Quantitative Economics

Year two

This year will help develop your knowledge of the theoretical framework for international trade and money, including topics such as globalisation, off-shoring, monetary policy and the business cycle. You can apply to spend a semester on exchange.

Typical core modules

- Applied Econometrics 1 and 2
- International Trade
- Macroeconomic Theory
- Microeconomic Theory

Typical optional modules

- Development Economics
- Experimental and Behavioural Economics
- Financial Economics

Year three

Typical core modules

- Advanced International Trade 1 and 2
- Economics Dissertation

Typical optional modules

- Advanced Development Economics
- Advanced Financial Economics
- Advanced Microeconomics
- Advanced Experimental and Behavioural Economics
- International Money and Macroeconomics
- Topics in Econometrics

Education



What is education?

This degree provides students with in-depth knowledge and understanding about teaching and learning, children and young people's development, and schooling in different cultural contexts. It aims to support students in becoming principled, effective and reflective in a wide range of professions.

How will I study?

Our undergraduate programmes blend international teacher education concepts with a variety of context-based approaches. Teaching combines lectures, seminars, workshops and tutorials with virtual learning environments and emphasis is also placed on self-led learning. Assessment is carried out through a variety of coursework and a supervised research project (dissertation) in an area of your choice in the third year.

Career prospects

Education is a challenging, exciting and rewarding career. Careers in education are available in four main areas:

- public and private schools, colleges and universities
- supplementary and alternative education providers
- the education products industry, including Information and communications technology, multimedia and conventional material development and publishing
- education services, including consultancy, investment services, research and technology services



At a glance

- As part of a truly international university, we provide a cross-cultural perspective within a global context and attract students from all over the world.
- The School of Education at the University of Nottingham, UK, is one of the largest and most established education departments in the country.
- You will benefit from innovative teaching methods which are informed by our high quality research in education: we were ranked 3rd in the UK in the UK Research Excellence Framework 2014.

All entry requirements, fees, school and programme information are intended as a guide and were accurate at the time of printing. For the most up to date information and further details of each programme please visit nottingham.edu.my/ugstudy

- ☎ +60 3 8924 8686
- 🌐 nottingham.edu.my/make-an-enquiry
- 📘 EducationUNM
- 🐦 UoNMalaysia
- 📍 nottingham.edu.my/education

BA/BEd (Hons)	Duration	Intake	Malaysian fees	International fees
BA Education (TESOL) KPT/JPS(R/145/6/0069)12/20	3 years full-time	September	RM27,600 per year	RM33,500 per year
BEd (TESOL) KPT/JPS(R/145/6/0089)12/20	4 years full-time	September	RM27,600 per year	RM33,500 per year

Entry requirements	English language requirements
A Level	BBC, excluding critical thinking and general studies.
IB Diploma	28 points with 5, 5, 4 at Higher Level..
STPM	B+B+B, excluding Pengajian Am.
UEC	1 A and 4 B3s, excluding Bahasa Malaysia and Chinese language.
SAM or other Australian Matriculations	ATAR 82 (consideration to be made based on relevant subjects).
Canadian Ontario Grade 12 Secondary School Diploma (OSSD)	80% average based on 6 subjects (consideration to be made based on relevant subjects). Canadian Secondary School Diplomas from other provinces are acceptable and to be assessed based on the University's requirements.
Advance Placement (AP)	4, 4, 3 in relevant subjects. Applicants taking non-preferred subjects may be made an offer across more than three subjects at Advanced Placement level.
Diploma - Other Institutions	Acceptance to the second year is on a case by case basis (and at the discretion of the School) but normally would require an overall GPA of 3.3 (out of 4) or 70% and above (consideration to be made based on relevant subjects), and previous studies must meet the prerequisite requirements to the programme.
Foundation - Other Institutions	Acceptance is at the discretion of the School but normally would require an overall GPA of 3.0 (out of 4) or 65% and above (consideration to be made based on relevant subjects), and previous studies must meet the prerequisite requirements to the programme.
University of Nottingham Malaysia Foundation	Successful completion of the Foundation in Arts and Education programme.
	IELTS (Academic): 6.5 (with no less than 6.0 in each element)
	TOEFL (iBT): 87 (minimum 20 in Speaking and 19 in all other elements)
	PTE (Academic): 62 (with no less than 55 in each element)
	GCE A Level English Language or English Literature: grade C
	GCE AS Level English Language or English Literature: grade C
	SPM: grade A-
	1119 (GCE O): grade B
	GCSE O-Level: grade C
	IGCSE (first language): grade C
	IGCSE (second language): grade B
	MUET: Band 4
	UEC: grade A2
	IB English A1 or A2 (Standard or Higher Level): 4 points
	IB English B (Higher Level): 4 points
	IB English B (Standard Level): 5 points

Students who do not meet these entry requirements may be considered on a case-by-case basis. Please see our entry requirement guidelines on page 76.

BA Education (TESOL) and BEd (TESOL)

The structure of the programme is modular, composed of modules contributing a specific number of credits. One credit represents 10 hours of student work; it means that that a 10 credit module represents 100 hours of student endeavour, including formal teaching, independent study, school-base experience and the preparation of assessments. An Honours degree requires the successful completion of 360 credits, 120 of which are taken in each year. The first year is called the Qualifying year. Students must complete and attain a satisfactory grade for the Qualifying year before they are allowed to progress to Part I (second year). The requirement is applied in Part I before students progress to Part II (third year). Part I counts for 40% and Part II counts for 60% of the final degree classification.

Year one

Typical core modules

- Behaviour and Classroom Management
- Education and Society
- Identifying and Understanding Special Education Needs
- Literacy in School and Society
- Understanding Learners and Learning

Typical optional modules

*Elective modules from any faculty in UNM (a 20 credits module or two 10 credits modules)

Year two

Typical core modules

- Curriculum Studies
- Literature in the Language Classroom
- Materials for Language Learning
- Teaching and Learning Strategies
- Teaching Language Across the Curriculum

Typical optional modules

*Elective modules from any faculty in UNM (a 20 credits module or two 10 credits modules)

Year three

Typical core modules

- Assessment and Evaluation in TESOL/SEN
- Educational Inquiry
- Educational Research
- Teaching Listening and Speaking
- Teaching Reading and Writing
- TESOL Methodology

Year four (BEd only)

Typical core modules

- Practical Teaching in TESOL
- School-based Continuing Professional Development
- School experience
- Teaching Portfolio





English

At a glance

- Our research expertise is broad and includes: 19th century literature; applied linguistics; American, British, and Malaysian literatures; creative writing; disprogramme analysis; systemic functional linguistics; bilingualism; world englishes; and gender and language.
- Our School of English is one of the oldest schools of English in the UK and is known globally for its international teaching and research.
- Our strong links with the Malaysian academic and literary communities will give you the opportunity to attend public talks, readings and literary festivals.

All entry requirements, fees, school and programme information are intended as a guide and were accurate at the time of printing. For the most up to date information and further details of each programme please visit nottingham.edu.my/ugstudy

- +60 3 8924 8686
- nottingham.edu.my/make-an-enquiry
- UoNMalaysia
- UoNMalaysia
- nottingham.edu.my/english

What is English?

English is a fascinating and wide-reaching subject which enables you to investigate how language shapes, and is shaped by, the dynamic environments in which it is used. English covers a range of areas and texts. The study of literature will involve relating works to their historical and social context, as well as wider questions of applied linguistics, while creative writing will develop your writing skills and insight into the process of writing. It will train you in cultural, literary and linguistic theories, thus enabling you to develop the high-level creative and analytical skills needed for academic as well as professional interactions.

How will I study?

You will take a combination of compulsory and optional modules, which are taught in weekly seminars and combine traditional lecture-style content with small group discussions, case studies and presentations. In your first year, you can expect around 12 scheduled contact hours a week and you will spend a significant amount of time each week on independent study. Staff offer individual and small group consultations and encourage you to seek their advice and feedback on your work. You will be assessed using a combination of individual research-based essays, portfolios, exams, oral presentations and occasional group work.

Career prospects

The creative, analytical and communication skills developed during an English degree will equip you for the changing demands of the 21st-century workplace. English graduates have a range of career choices open to them. These include advertising, banking, broadcasting, business, communications, the creative industries, government service, human resources, journalism, law, lecturing, management, marketing, public relations, publishing, research and teaching. Some students may choose to undertake postgraduate study or teacher training.

BA (Hons)	Duration	Intake	Malaysian fees	International fees
BA English Language and Literature KPT/JPS(R/222/6/0026)1/23	3 years full-time	September	RM27,600 per year	RM33,500 per year
BA English with Creative Writing KPT/JPS(R/222/6/0027)1/23	3 years full-time	September	RM27,600 per year	RM33,500 per year

Entry requirements	English language requirements	
A Level	BBB, excluding critical thinking and general studies.	IELTS (Academic): 6.5 (with no less than 6.0 in each element)
IB Diploma	30 points with 5, 5, 5 at Higher Level.	TOEFL (iBT): 87 (minimum 20 in Speaking and 19 in all other elements)
STPM	B+B+B+, excluding Pengajian Am.	PTE (Academic): 62 (with no less than 55 in each element)
UEC	2 As and 3 B3s, excluding Bahasa Malaysia and Chinese language.	GCE A Level English Language or English Literature: grade C
SAM or other Australian Matriculations	ATAR 86 (consideration to be made based on relevant subjects).	GCE AS Level English Language or English Literature: grade C
Canadian Ontario Grade 12 Secondary School Diploma (OSSD)	80% average based on 6 subjects (consideration to be made based on relevant subjects). Canadian Secondary School Diplomas from other provinces are acceptable and to be assessed based on the University's requirements.	SPM: grade A-1119 (GCE O): grade B GCSE O-Level: grade C
Advance Placement (AP)	4, 4, 4 in relevant subjects. Applicants taking non-preferred subjects may be made an offer across more than three subjects at Advanced Placement level.	IGCSE (first language): grade C IGCSE (second language): grade B
Diploma - Other Institutions	Acceptance to the second year is on a case by case basis (and at the discretion of the School) but normally would require an overall GPA of 3.3 (out of 4) or 70% and above (consideration to be made based on relevant subjects), and previous studies must meet the prerequisite requirements to the programme.	MUET: Band 4 UEC: grade A2
Foundation - Other Institutions	Acceptance is at the discretion of the School but normally would require an overall GPA of 3.3 (out of 4) or 70% and above (consideration to be made based on relevant subjects), and previous studies must meet the prerequisite requirements to the programme.	IB English A1 or A2 (Standard or Higher Level): 4 points IB English B (Higher Level): 4 points IB English B (Standard Level): 5 points
University of Nottingham Malaysia Foundation	Successful completion of the Foundation in Arts and Education programme.	

Students who do not meet these entry requirements may be considered on a case-by-case basis. Please see our entry requirement guidelines on page 76.

Related programmes

BA International Communication Studies (page 67)
BA International Communication Studies with English Language and Literature (page 67)

BA International Communication Studies with Film and Television Studies (page 67)

For more information about our programmes, visit
nottingham.edu.my/ugstudy

BA English Language and Literature

BA English with Creative Writing

On both English degrees, you will study a range of core literature and language modules in years one and two, followed by a range of optional modules in your final year. Students on the BA English with Creative Writing programme will devote two thirds of their time to the area of English and one third to creative writing. The two strands of the programme are strongly connected: your developing knowledge and understanding of the various aspects of English will inform your creative writing practice, and vice versa.

Year one

Typical core modules

- Academic Community
- Beginning Creative Writing*
- Introduction to Linguistics
- Studying Literature
- The Influence of English
- The Survey of English Literature and Drama

Year two

Typical core modules

- Discourse and Society
- Language, Gender, and Sexuality
- Literary Linguistics
- Modern and Contemporary Literature
- Prose and Poetry Writing*
- Victorian and Fin de Siecle Literature
- World Literatures in English
- Writing for Performance*

Year three

Typical core modules

- Advanced Writing Practice*
- Dissertation in Creative Writing*
- Dissertation in Language or Literature (Optional)
- Malaysian English (Optional)
- Malaysian Literature in English (Optional)
- Modern British Fiction Since 1950
- Patterns, Functions, and the Description of English
- Shakespeare and His Contemporaries on the Stage
- Sociolinguistics

* English with Creative Writing students only



Our degrees cover a wide range of language skills in English.

Media, Languages and Cultures



What is international communications?

Media and communications underpin almost every facet of modern life, from the global economy to interpersonal relationships and our leisure time, to-how we learn about the world we live in. With digitisation and convergence only accelerating this trend, there is an ever-increasing need to understand the implications of these developments and to gain the skills and knowledge necessary to participate in shaping global media and communication infrastructures.

The constant buzz at International Communications explores the complex world of communications, culture and media in their various forms – linguistic, multimodal and visual – from new technologies, politics and popular culture, to critical theory, high culture and news media. It will train you in the theories and realities of local and international media and communication, enabling you to develop the analytical, creative, practical and problem-solving skills needed to succeed in our globalised society.

How will I study?

Classes are a dynamic mix of traditional lecture-style content delivery and class discussions, where you will be encouraged to ask questions and voice your own opinions and interpretations. In addition to theoretical and philosophical approaches, our teaching methods emphasise: argumentation, communication and presentation skills; collaboration and teamwork; comprehension and information processing; independent thinking; and practical and vocational engagement. You will be assessed through individual research-based essays and presentations as well as group work in order to foster the successful team dynamic essential to many professions, and via various digital media platforms

At a glance

- Our BA degrees have a compulsory language component which allows you to learn a modern European or Asian language to a high degree of proficiency, providing you with a leading edge in the globally competitive job market.
- Our campuses in the UK and China and range of media and communication industry connections provide you with the opportunity to study abroad and apply for summer internships during your degree.
- The School of Media, Languages and Cultures engages in dynamic and impactful research into the macro and micro-level workings of the global media and communication environment.

All entry requirements, fees, school and programme information are intended as a guide and were accurate at the time of printing. For the most up to date information and further details of each programme please visit nottingham.edu.my/ugstudy

+60 3 8924 8686

nottingham.edu.my/make-an-enquiry

UNMCMLC

@UNMCMLC

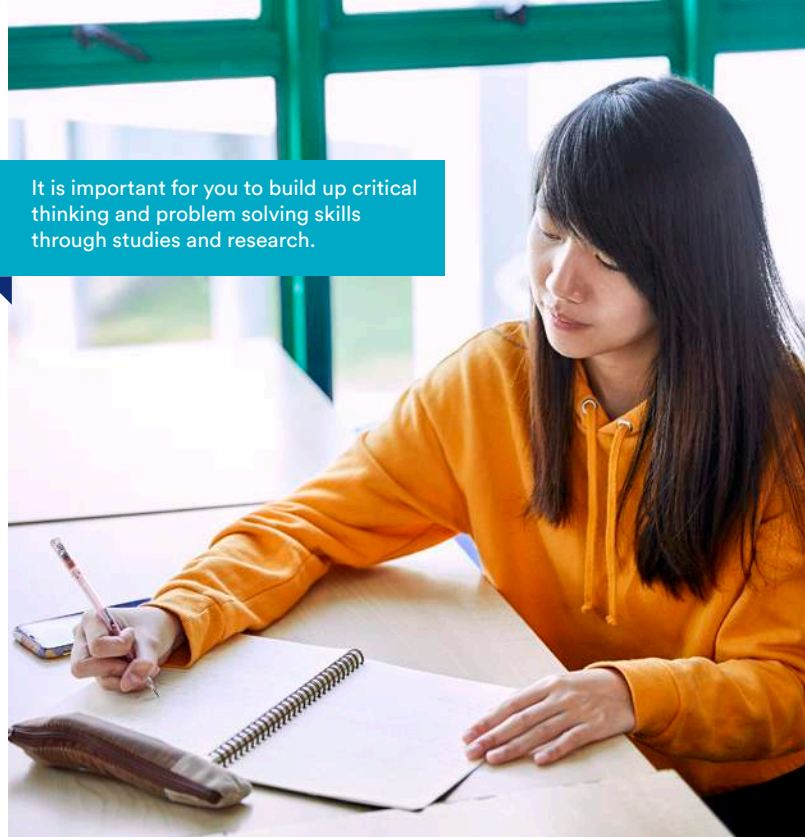
nottingham.edu.my/media-languages

Career prospects

An international communications degree is your passport to a variety of rewarding professions. Likely career fields include: the audio-visual, digital and print media industries; marketing; production; public relations; and research. Career paths in these fields include advertising account executives, copywriters and creative roles, news editors, journalists and reporters.

Other career options include: arts or heritage administration and management; the civil service, diplomatic or embassy work and government service; non-governmental organisations, politics and think-tanks; and consultancy, human resources, management and recruitment within the international business environment. Graduates with a passion for language can pursue interpreting, publishing and translation roles while others may continue their studies and pursue research and/or teaching.

It is important for you to build up critical thinking and problem solving skills through studies and research.



BA (Hons)	Duration	Intake	Malaysian fees	International fees
BA International Communication Studies KPT/JPS(R/321/6/0194)3/21	3 years full-time	September	RM36,000 per year	RM42,000 per year
BA International Communication Studies with English Language and Literature UNM/KPM-JPT(R2/321/6/0155)10/24	3 years full-time	September	RM36,000 per year	RM42,000 per year
BA International Communication Studies with Film and Television Studies UNM/KPM-JPT(R2/321/6/0154)10/24	3 years full-time	September	RM36,000 per year	RM42,000 per year
BA International Communications Studies with Performing Arts UNM/KPM-JPT(N/321/6/0250)11/24	3 years full-time	September	RM27,600 per year	RM33,500 per year
BA Liberal Arts UNM/KPM-JPT(N/312/6/0034)11/24	3 years full-time	September	RM27,600 per year	RM33,500 per year

Entry requirements	English language requirements	
A Level	BBC, excluding critical thinking and general studies.	IELTS (Academic): 6.5 (with no less than 6.0 in each element)
IB Diploma	28 points with 5, 5, 4 at Higher Level.	TOEFL (iBT): 87 (minimum 20 in Speaking and 19 in all other elements)
STPM	B+B+B, excluding Pengajian Am.	PTE (Academic): 62 (with no less than 55 in each element)
UEC	1 A and 4 B3s, excluding Bahasa Malaysia and Chinese language.	GCE A Level English Language or English Literature: grade C
SAM or other Australian Matriculations	ATAR 82 (consideration to be made based on relevant subjects).	GCE AS Level English Language or English Literature: grade C
Canadian Ontario Grade 12 Secondary School Diploma (OSSD)	80% average based on 6 subjects (consideration to be made based on relevant subjects). Canadian Secondary School Diplomas from other provinces are acceptable and to be assessed based on the University's requirements.	SPM: grade A-
Advance Placement (AP)	4, 4, 3 in relevant subjects. Applicants taking non-preferred subjects may be made an offer across more than three subjects at Advanced Placement level.	1119 (GCE O): grade B
Diploma - Other Institutions	Acceptance to the second year is on a case by case basis (and at the discretion of the School) but normally would require an overall GPA of 3.3 (out of 4) or 70% and above (consideration to be made based on relevant subjects), and previous studies must meet the prerequisite requirements to the programme.	GCSE O-Level: grade C
Foundation - Other Institutions	Acceptance is at the discretion of the School but normally would require an overall GPA of 3.0 (out of 4) or 65% and above (consideration to be made based on relevant subjects), and previous studies must meet the prerequisite requirements to the programme.	IGCSE (first language): grade C
University of Nottingham Malaysia Foundation	Successful completion of the Foundation in Arts and Education or Business and Management programme.	IGCSE (second language): grade B
		MUET: Band 4
		UEC: grade A2
		IB English A1 or A2 (Standard or Higher Level): 4 points
		IB English B (Higher Level): 4 points
		IB English B (Standard Level): 5 points

Students who do not meet these entry requirements may be considered on a case-by-case basis. Please see our entry requirement guidelines on page 76.

Related programmes

BA English Language and Literature (page 61)

BA English with Creative Writing (page 61)

BA International Communication Studies**BA International Communication Studies with English Language and Literature****BA International Communication Studies with Film and Television Studies**

You will study a range of core compulsory modules to give you a thorough grounding in international media and communications. You will also take additional compulsory or optional modules from within the school or faculty. A unique aspect of our degree programmes is the compulsory language component, where you will learn a new modern language and graduate with a high level of spoken and written fluency in your chosen language. You may also apply for a range of summer internships within the Malaysian and international media and communication industry. There is also the chance to apply for mobility exchanges to the UK or China campuses in your second and third years of study.

Year one**Typical core modules**

- Beginners French, German, Japanese, Korean, Mandarin or Spanish (full year)
- Culture and Society
- Introduction to Linguistics*
- Media and Communications Theory
- Producing Film and Television**
- Reading Film and Television**
- Studying Literature*

Typical optional module

- Global Music Studies

Year two**Typical core modules**

- Film and TV in Social and Cultural Context**
- Intermediate French, German, Japanese, Korean, Mandarin or Spanish (full year)
- Music in Film**
- Political Communication, Public Relations and Propaganda
- Reading Chinese and Japanese Literature 1
- Researching Culture, Film and Media (full year)

Plus one literature and one linguistics module from the School of English (please refer to their module listings on page 61).

Typical optional modules

- Community Interpreting
- Cultural Politics
- Introduction to Translation

Year three**Typical core modules**

- Advanced French, German, Japanese, Korean, Mandarin or Spanish (full year)
- Cultural, Film and Media Dissertation (full year)
- Digital Communication and Media
- Documentary Film and Documentary Practice**
- Gender, Sexuality and Media
- Media and Conflict
- Modern British Fiction*
- Patterns, Functions and Descriptions of English*
- Southeast Asian Film**
- Writing for the Media

* Compulsory for English language and literature students only.

** Compulsory for film and television studies students only.

BA International Communications Studies with Performing Arts

The International Communication Studies with Performing Arts pathway is conceived with a clear aim - allowing students to combine their Career with their Passion.

Performing Arts worldwide is a multibillion industry, which demands qualified practitioners in a range of positions that encompass the whole creative and production process, from performers to technical staff, from stage direction to communication and management. Our graduates will learn how to become leading voices in this fascinating field, gaining understanding on the dynamics of Creative Industries, and on the social and cultural elements inherent to them. They will have the opportunity of gaining hands-on practice in the process of development and production of music, dance and theatre shows, while developing further understanding in the field of Media and Communication.

This course is particularly intended for students with a passion for Performing Arts (including music, dance and theatre), who want to find solid career options within the field.

Year one**Typical core modules**

- Culture and Society
- Beginners French, German, Japanese, Korean, Mandarin or Spanish (full year)
- Global Music Studies
- Literature and English Drama
- Media and Communications Theory

Year two**Typical core modules**

- Intermediate French, German, Japanese, Korean, Mandarin or Spanish (full year)
- Music in Film
- Political Communication, Public Relations and Propaganda
- Researching Culture, Film and Media (full year)
- Writing for Performance

Year three**Typical core modules**

- Creative Project
- Advanced French, German, Japanese, Korean, Mandarin or Spanish (full year)
- Writing for the Media

Typical optional modules

- Digital Communication and Media
- Psychology of Music
- Gender, Sexuality and Media



BA Liberal Arts

Changes in the global economy, increasing challenges in employment and new opportunities arising from technological innovation have made the Liberal Arts degree a valuable asset – one that is recognised by employers and governments across the world. This is due to the capacity for this type of degree to foster creativity as well as ensuring that students have a broad range of skills and experiences.

The core modules in this programme equip students with relevant research skills in the Arts & Social Sciences. These are regarded as life-long learning skills, culminating in a Dissertation, which require students to apply these skills to develop a written project of 10,000 words in an area relevant to the field. The modules also include a business component that will enhance students' employability; and a language component that offers students the opportunity to learn a chosen language from Beginners to Advanced level. This is also a crucial skill for employability and increases the 'international' portfolio of the student. The optional Arts & Social Sciences modules allow students to study from a range of disciplines to create an original academic portfolio in the areas of Education; English; Culture, Film & Media; and Politics, History & International Relations.

The Liberal Arts programme at the University of Nottingham also incorporates established traditions to create a degree that offers a genuinely global perspective. What is significant for Liberal Arts students is that they can use the three campuses to develop a unique curriculum that reflects their interests and helps to build their own unique profile. For example, a student from the Malaysia campus will benefit from studying for a semester in the UK or China by taking modules in business, politics and economics that might not feature within their programme at home.

Year one

Typical core modules

- Applied Research Methods
- Beginners French, German, Japanese, Korean, Mandarin or Spanish (full year)
- Business Economics
- Culture and Society

Typical optional modules

- Approaches to Global Politics
- Global Music Studies
- Identifying and Understanding Special Needs Education
- Introduction to European Politics
- Literacy in Schools and Society
- Media and Communications Theory
- Producing Film and Television
- Reading Film and Television
- The Influence of English 1
- The Making of Modern Asia
- The Survey of English Literature and Drama 1
- Understanding Schools and Schooling

Year two

Typical core modules

- Advanced Research Methods
- Cultural Politics
- Entrepreneurship: Theory and Practice
- Intermediate French, German, Japanese, Korean, Mandarin or Spanish (full year)
- Research Culture, Film and Methods

Typical optional modules

- English Through Time
- Film and Television in Social and Cultural Context
- Global Political Economy and International Development
- International Relations of the Asia Pacific
- Learning Styles and Strategies
- Modern and Contemporary Literature
- Music in Film
- Political Communication, Public Relations and Propaganda
- Teaching Styles and Strategies

Year three

Typical core modules

- Advanced French, German, Japanese, Korean, Mandarin or Spanish (full year)
- Dissertation
- Strategic Management

Typical optional modules

- Comparative Political Economy in East Asia
- Democracy and Authoritarianism in Southeast Asia
- Documentary Film and Documentary Practice
- Drama, Theatre and Performance
- Gender, Sexuality and Media
- Literature in the Classroom
- Malaysian Literature in English
- Materials for Language Teaching
- Phonetics and Phonology for Language Teaching
- Southeast Asian Film
- The Teaching of Grammar
- Writing for the Media

Politics, History and International Relations



International relations as a profession

There has never been a more relevant or exciting time to study politics and international relations on an Asian campus. Economic globalisation, social mobility and rapid changes in domestic, regional and global politics increasingly impact on our daily lives. International Relations, as an academic discipline, studies complex dynamics involving states, development challenges, societal groups, identities and cultures in areas such as economics, law, politics and security. It considers some of the most burning questions of the day, and also investigates deeper questions relating to how we understand and conceptualise contemporary global transformations.

How will I study?

Our teaching methods are designed to nurture deep knowledge of the field and to help you develop the transferable skills required to succeed in your future career. As well as lectures and seminars, our staff utilise films, role plays and simulations, often in problem-solving settings. You will be presented with a variety of challenges and types of assessment, including essays, exams, group projects, policy papers, presentations and reviews.

The school specialises in small group teaching, which will enable you to explore the subject as it is practised – through intense debate and discussion.

Career prospects

Our degrees will equip you for a career in a variety of fields including aid and non-governmental sectors, finance and international business, foreign ministries, international media and journalism, international organisations, local and national government, lobbying and policy advice and think-tanks.

At a glance

- As part of a global university with a thriving international student body, the School of Politics, History and International Relations provides a unique environment for studying international relations.
- Our academic staff are trained educators engaged in a range of internationally recognised cutting-edge, policy relevant and discipline driven research. They are active scholars whose expertise engages with a variety of areas, including international security, global political economy, comparative politics, development, and the politics of Southeast Asia, Europe and the Middle East. They also participate in public debate and provide commentary through the media.

All entry requirements, fees, school and programme information are intended as a guide and were accurate at the time of printing. For the most up to date information and further details of each programme please visit nottingham.edu.my/ugstudy

- +60 3 8924 8686
- nottingham.edu.my/make-an-enquiry
- UoNMalaysia
- UoNMalaysia
- nottingham.edu.my/politics

BA (Hons)	Duration	Intake	Malaysian fees	International fees
BA International Relations UNM/KPM-JPT(R2/313/6/0017)10/24	3 years full-time	September	RM36,000 per year	RM42,000 per year
BA International Relations with French UNM/KPM-JPT(R2/313/6/0018)10/24	3 years full-time	September	RM36,000 per year	RM42,000 per year
BA International Relations with Spanish UNM/KPM-JPT(R2/313/6/0019)10/24	3 years full-time	September	RM36,000 per year	RM42,000 per year

Entry requirements		English language requirements
BA International Relations		IELTS (Academic): 6.5 (with no less than 6.0 in each element)
A Level	BBC, excluding critical thinking and general studies.	
IB Diploma	28 points with 5, 5, 4 at Higher Level.	TOEFL (iBT): 87 (minimum 20 in Speaking and 19 in all other elements)
STPM	B+B+B excluding Pengajian Am.	
UEC	1 A and 4 B3s, excluding Bahasa Malaysia and Chinese language.	PTE (Academic): 62 (with no less than 55 in each element)
SAM or other Australian Matriculations	ATAR 82 (consideration to be made based on relevant subjects).	GCE A Level English Language or English Literature: grade C
Canadian Ontario Grade 12 Secondary School Diploma (OSSD)	80% average based on 6 subjects (consideration to be made based on relevant subjects). Canadian Secondary School Diplomas from other provinces are acceptable and to be assessed based on the University's requirements.	GCE AS Level English Language or English Literature: grade C
Advance Placement (AP)	4, 4, 3 in relevant subjects. Applicants taking non-preferred subjects may be made an offer across more than three subjects at Advanced Placement level.	SPM: grade A-
Diploma - Other Institutions	Acceptance to the second year is on a case by case basis (and at the discretion of the School) but normally would require an overall GPA of 3.3 (out of 4) or 70% and above (consideration to be made based on relevant subjects), and previous studies must meet the prerequisite requirements to the programme.	1119 (GCE O): grade B GCSE O-Level: grade C IGCSE (first language): grade C
Foundation - Other Institutions	Acceptance is at the discretion of the School but normally would require an overall GPA of 3.0 (out of 4) or 65% and above (consideration to be made based on relevant subjects), and previous studies must meet the prerequisite requirements to the programme.	IGCSE (second language): grade B MUET: Band 4
University of Nottingham Malaysia Foundation	Successful completion of the Foundation in Arts and Education or Business and Management programme.	UEC: grade A2 IB English A1 or A2 (Standard or Higher Level): 4 points IB English B (Higher Level): 4 points IB English B (Standard Level): 5 points

Students who do not meet these entry requirements may be considered on a case-by-case basis. Please see our entry requirement guidelines on page 76.

Entry requirements	English language requirements
BA International Relations with a language	
Applicants for degree programmes with a language minor must have no prior knowledge of that language	
A Level	BBB, excluding critical thinking and general studies.
IB Diploma	30 points with 5, 5, 5 at Higher Level.
STPM	B+B+B+, excluding Pengajian Am.
UEC	2 As and 3 B3s, excluding Bahasa Malaysia and Chinese language.
SAM or other Australian Matriculations	ATAR 86 (consideration to be made based on relevant subjects).
Canadian Ontario Grade 12 Secondary School Diploma (OSSD)	80% average based on 6 subjects (consideration to be made based on relevant subjects). Canadian Secondary School Diplomas from other provinces are acceptable and to be assessed based on the University's requirements.
Advance Placement (AP)	4, 4, 4 in relevant subjects. Applicants taking non-preferred subjects may be made an offer across more than three subjects at Advanced Placement level.
Diploma - Other Institutions	Acceptance to the second year is on a case by case basis (and at the discretion of the School) but normally would require an overall GPA of 3.3 (out of 4) or 70% and above (consideration to be made based on relevant subjects), and previous studies must meet the prerequisite requirements to the programme.
Foundation - Other Institutions	Acceptance is at the discretion of the School but normally would require an overall GPA of 3.3 (out of 4) or 70% and above (consideration to be made based on relevant subjects), and previous studies must meet the prerequisite requirements to the programme.
University of Nottingham Malaysia Foundation	Successful completion of the Foundation in Arts and Education or Business and Management programme.

Students who do not meet these entry requirements may be considered on a case-by-case basis. Please see our entry requirement guidelines on page 76.

Related programmes

BA International Communication Studies (page 67)

BA International Relations

BA International Relations with French/Spanish

International Relations studies the complex relations between states and international organisations in areas such as economics, law, politics and security. Our programmes offer a balance between theory and practice. They will prepare you to participate actively in many fields of work, including politics, advocacy and business.

Your first year will introduce you to the key analytical approaches used in the study of global politics, drawing on international political events in historical and contemporary settings. Your second year modules will focus on contemporary history, global society, political economy and security and prepare you for your final year dissertation by providing training in research techniques. You may pursue your own independent research project during your third year while taking optional modules based on the research expertise of our staff.

Year one

Typical core modules

- Approaches to Global Politics
- Governing the World
- Introduction to European Union Politics
- Power and Contest: Living in a Political World
- The Making of Modern Asia

Typical optional modules

- Beginners French/Spanish
- Business Economics
- Culture and Society
- Introduction to Applied Psychology
- Media and Communications

Year two

Typical core modules

- Global Political Economy and International Development
- International Relations of the Asia Pacific
- International Security

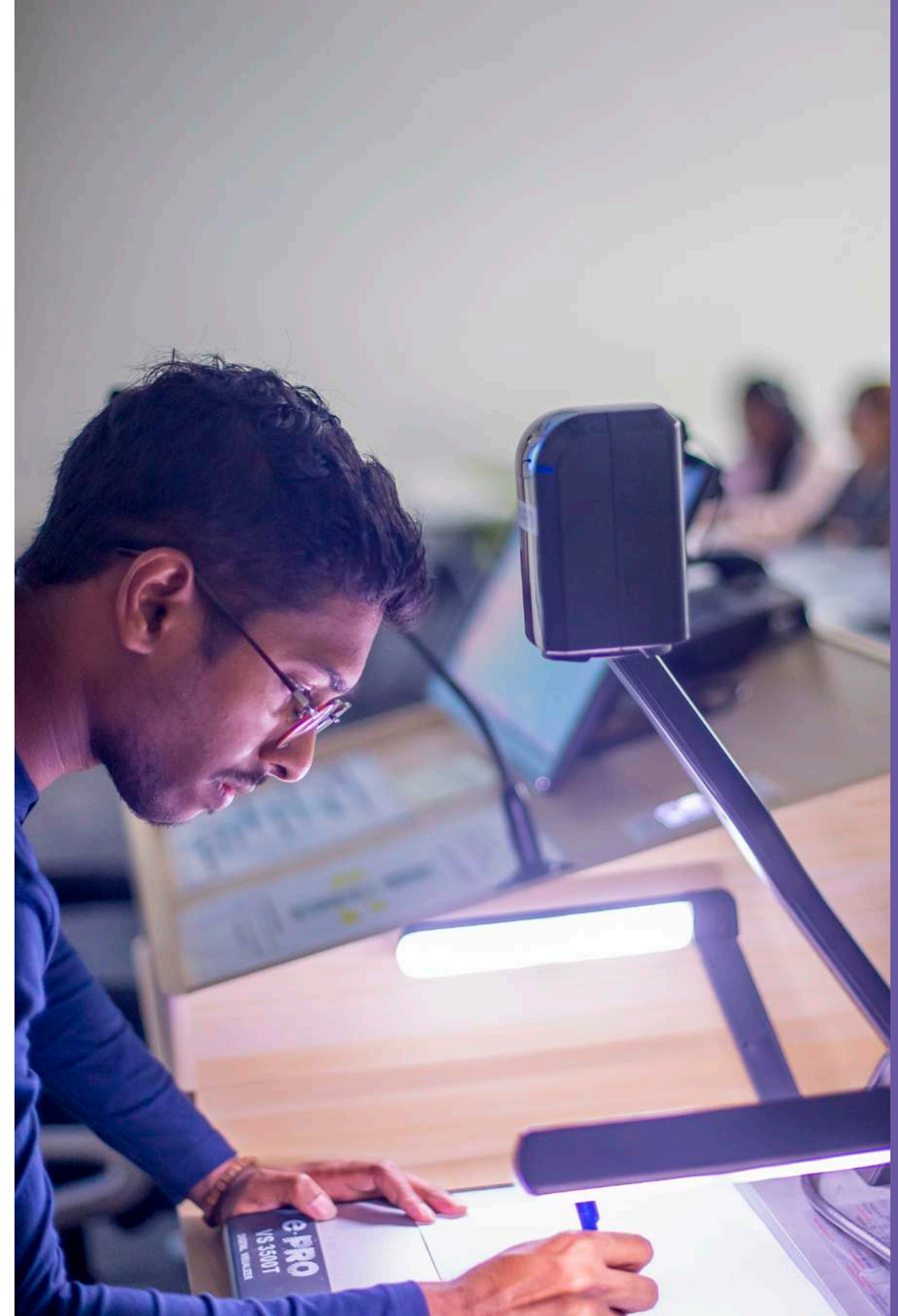
Typical optional modules

- Comparative Politics
- Designing International Relations Research
- Intermediate French/Spanish
- Political Communication, Public Relations and Propaganda

Year three

Typical optional modules

- Advanced French/Spanish
- Comparative Political Economy of East and Southeast Asia
- Dissertation: Politics, History and International Relations (for non-language students)
- Environmental Politics
- Food, Hunger and Development
- Policy and Persuasion
- Politics and International Relations of the Middle East



How to apply

You can apply online via our Online Admissions Application Portal (MyNottingham). To create an application, you will need to register to create an account or log in if you have previously applied online.

 mynottingham.nottingham.edu.my

You can also download an application form from the website. Paper copies are also available. We can mail it to you or you can visit in person to collect one.

 nottingham.edu.my/applications

We are only able to accept applications via post or through MyNottingham. If you have any queries, please contact us.

 +60 3 8924 8686

 nottingham.edu.my/make-an-enquiry

Application Fee

The University charges an application fee of RM100 for Malaysian applicants and RM200 for international applicants for all programmes. This fee applies to online and paper applications.

 nottingham.edu.my/applications

Step 1

Apply online or complete the paper application form (details above).

Supporting documents needed

- Copy of ID page of passport for international
- Copy of NRIC for Malaysian applicants
- Programme syllabus (for those applying for entry into the second year of study)
- English language qualifications (if applicable)
- Official SPM/GCSE, AS level results and predicted STPM/UEC/A level grades or equivalent

Step 2

An acknowledgement email (with Nottingham ID) will be sent to you upon receipt of your application.

Step 3

Your application will be considered by our admission tutors and a decision will be made within two working weeks. A confirmation email will be sent to applicants once a decision has been made. Successful applicants will receive a notification through email and will

be able to log in to MyNottingham to download the following documentation (hard copies are not provided):

- Offer Letter
- Offer pack (containing next steps, accommodation, student visa, Wellbeing and Learning Support Services and payment of tuition fees information) - link will be provided in the offer letter

Applicants and agents will be able to view the progress of applications and make payments online through MyNottingham.

Step 4

Offer holders will be given a four-week deadline to accept offer and pay a tuition fee deposit of RM1,000 (Malaysian offer holders) or RM2,000 (International offer holders) before the lapsed date in the offer letter.

For further information on the offer acceptance and refund of tuition fee deposit, visit our website:

 nottingham.edu.my/study/offer-acceptance

Step 5

You will be able to apply for the on-campus accommodation and student visa after you have accepted your offer and paid the tuition fee deposit.

Step 6

Prior to registration day, you will receive an email which contains registration information.

It is important to note that University of Nottingham Malaysia requires all offer holders to complete two different parts of the registration process - Part 1: Online Registration and Part 2: In Person Registration.

International students

As an international student, we advise that you submit your application at least three months before your intake as your visa can take three months to process. If we receive your application after this date it will still be processed, but we cannot guarantee accommodation availability or that the visa processes will be completed in time for the last date of registration. Your application cannot be processed until all of the required forms and documents have been completed and sent in and you have paid the application fee. For further information, please contact us.

 +60 3 8924 8686

 nottingham.edu.my/make-an-enquiry

What are we looking for?

Consideration will be given to whether applicants will be able to fulfil the objectives of their programme of study and achieve the standards required. A range of factors additional to, and in some cases instead of, formal examination of results are considered in the selection process. These can include:

- additional evidence of achievement, motivation and potential gathered through an interview, assessment of written materials or additional selection tests
- other factors as appropriate to the discipline, such as employment or voluntary work in relevant fields and sustained critical engagement with relevant issues
- the personal statement and reference

Intake

February

- only applicable for selected undergraduate programmes

April

- three-semester foundation programme

June

- three-semester foundation programmes (excluding Foundation in Science)

September

- all foundation programmes
- all undergraduate programmes

 nottingham.edu.my/applications

Entry requirement guidelines

We strongly encourage all interested students to apply. Our students come to us with a diverse range of qualifications and we also consider applicants' personal statement, references and interview performance (if you have one) when making a decision. The only way for us to fully determine eligibility is through the submission of a completed application.

English language requirement guidelines

IELTS and TOEFL test results must be less than two years old and all IELTS must be the academic version of the test.

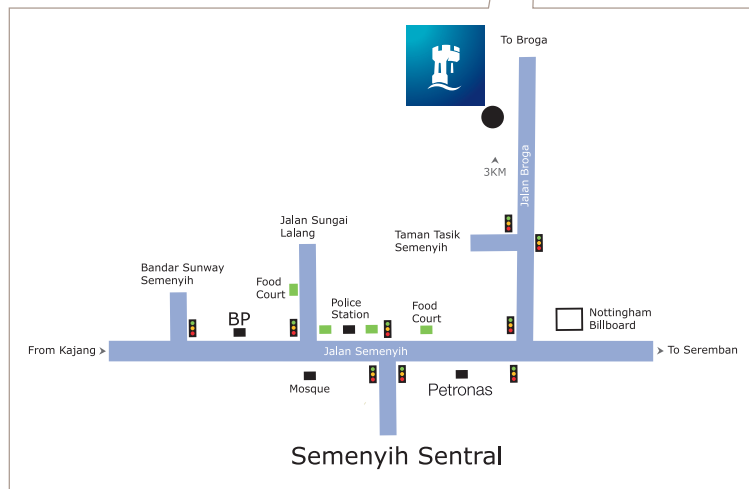
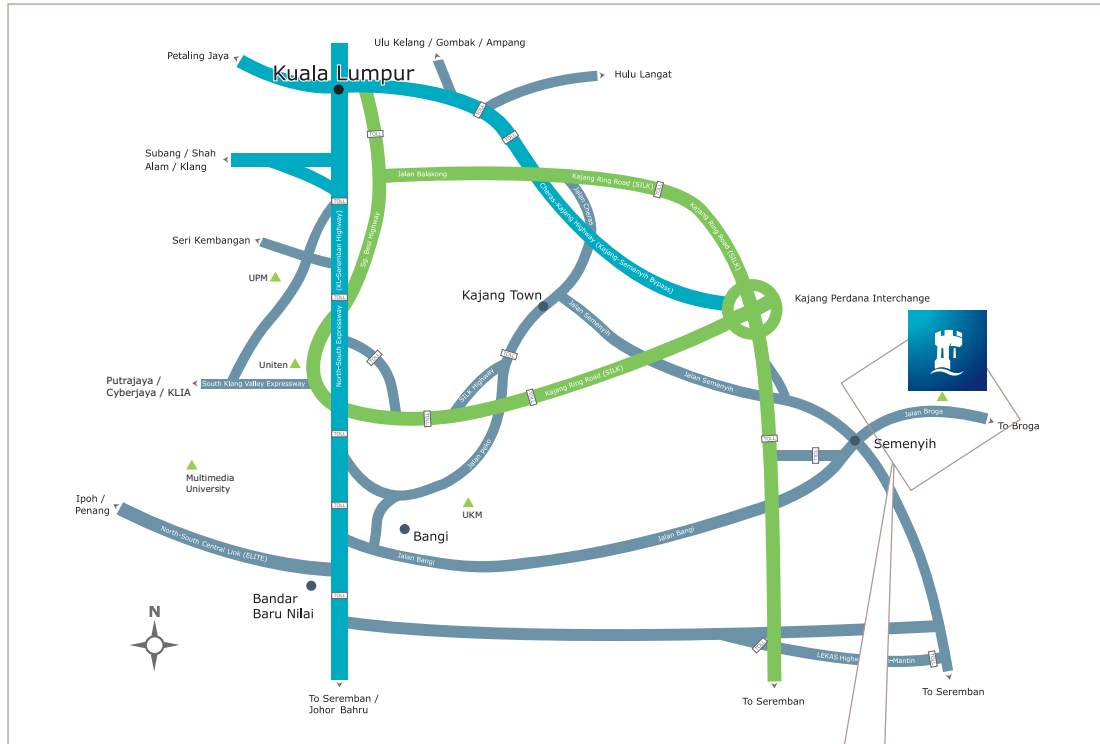
MUET results are valid for five years from the date of the release of results.



Where to find us

University of Nottingham Malaysia can be reached easily by train, bus, car or taxi. The University provides bus services for staff and students to/from Kajang KTM station and Terminal Bersepadu Selatan (TBS) next to Bandar Tasik Selatan LRT station.

 nottingham.edu.my/maps



University of Nottingham Malaysia
 DULN001(B)
 Jalan Broga, 43500 Semenyih,
 Selangor Darul Ehsan, Malaysia

-  **+60 3 8924 8686**
-  **nottingham.edu.my/make-an-enquiry**
-  **UoNMalaysia**
-  **UoNMalaysia**
-  **nottingham.edu.my**

Index

Programme	Page
Applied Psychology and Management	46
Business Economics and Finance	52
Business Economics and Management	52
Economics	57
Economics and International Economics	57
Education (TESOL)	60
English Language and Literature	63
English with Creative Writing	63
Finance, Accounting and Management	53
Foundation in Arts and Education	40
Foundation in Business and Management	40
International Business Management	53
International Communication Studies	67
International Communication Studies with English Language and Literature	67
International Communication Studies with Film and Television Studies	67
International Communication Studies with Performing Arts	68
International Relations	73
International Relations with French/Spanish	73
Liberal Arts	69
Management	54
TESOL	60

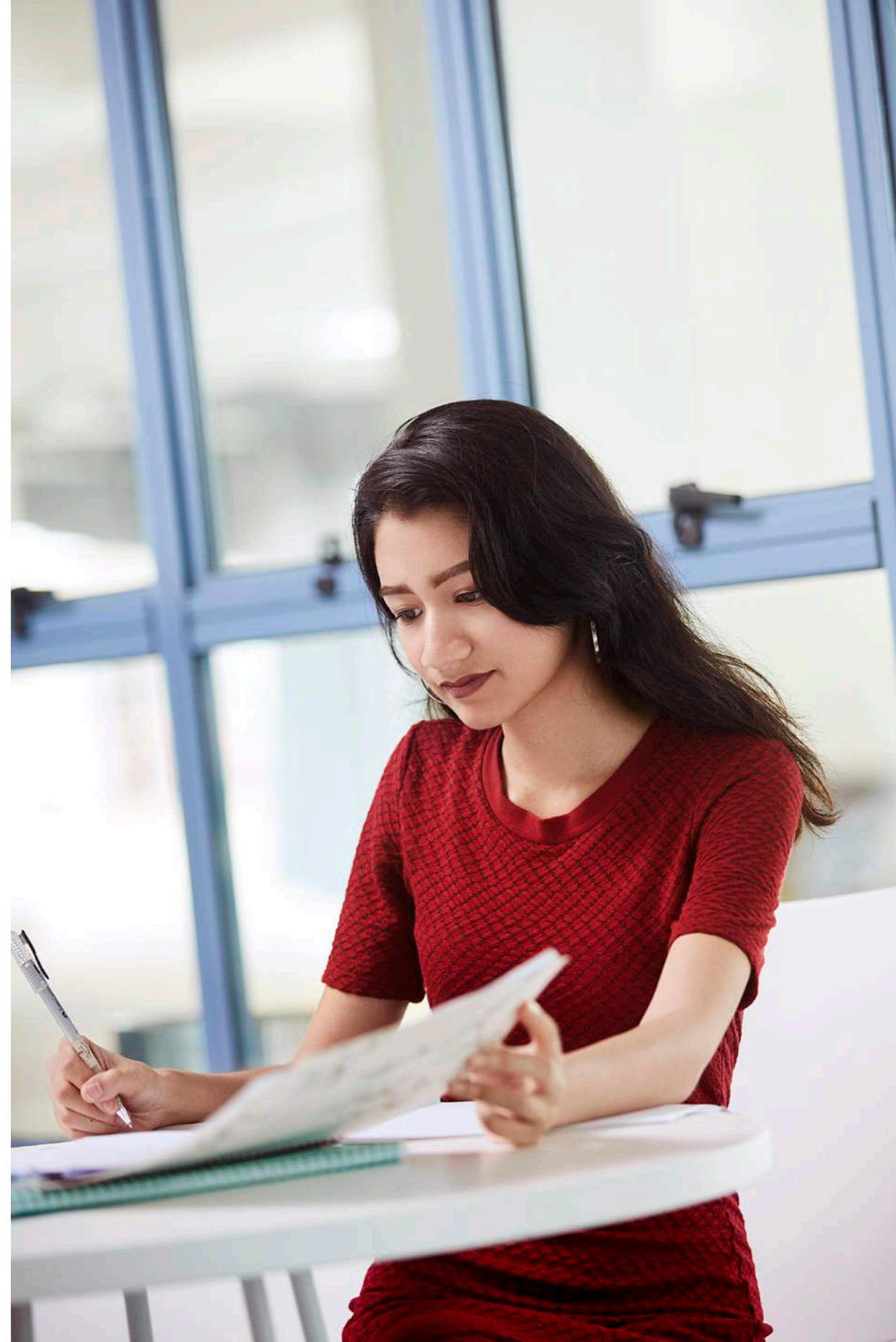
The University of Nottingham has made every effort to ensure that the information in this brochure was accurate when published. Please note, however, that the nature of the content means that it is subject to change from time to time, and you should therefore consider the information to be guiding rather than definitive. You should check the University's website for any updates before you decide to accept a place on a programme by visiting

 nottingham.edu.my/ugstudy

Where there is a difference between the contents of this study guide and our website, the contents of the website take precedence and represent the basis on which we intend to deliver our educational services to you.

© University of Nottingham 2020. All rights reserved.

Printed December 2019



Get social

Connect with Nottingham

Find out about student life at Nottingham and interact with the University community, anytime, anywhere in the world.

Discover more:



Explore the world of Nottingham

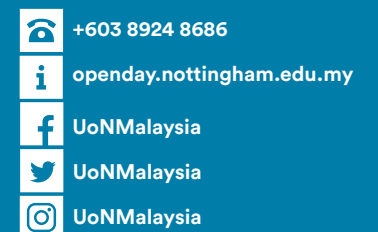
Visit our inspiring campus on an open day



Open days

2020

Book it:





University of
Nottingham

UK | CHINA | MALAYSIA

For undergraduate enquiries contact:
Student Recruitment Enquiry Centre



+603 8924 8686



nottingham.edu.my/make-an-enquiry



UoNMalaysia



UoNMalaysia

nottingham.edu.my

THE TIMES
THE SUNDAY TIMES

GOOD
UNIVERSITY
GUIDE
2019

SPORTS
UNIVERSITY
OF THE YEAR