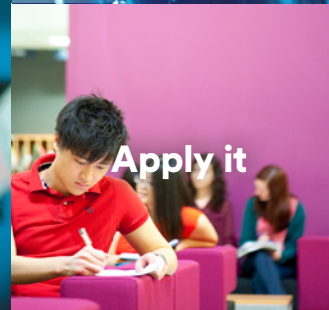


Realise it



Detect it



Apply it



See it



Inspect it



Experience it



Achieve it



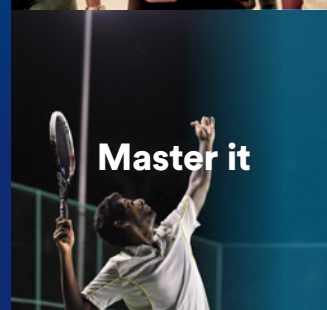
Perfect it



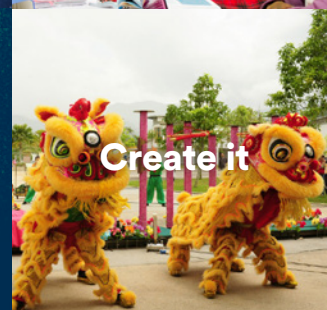
Prove it



Achieve it in a world  
beyond ordinary



Master it



Create it



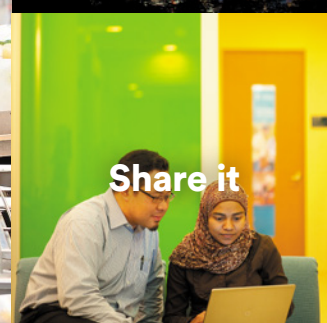
Explore it



Visualise it



Discover it



Share it



# Welcome to the world of Nottingham

## Access to a world-class UK education

Our programmes are Honour degree programmes and taught in English. All students graduate with the same degree and the same certificate, irrespective of which campus they study at. Our degrees are accredited by international professional bodies such as:

- Association of Chartered Certified Accountants (ACCA)
- Association for Nutrition (AfN) UK
- British Computer Society (BCS)
- British Psychological Society (BPS)
- Certified Practising Accountant (CPA) Australia
- Chartered Institute of Management Accountants (CIMA)
- Engineering Council, UK (EUCUK)
- European Foundation for Management Development (EFMD) Quality Improvement System (EQUIS)
- General Pharmaceutical Council (GPhC), UK
- Institute of Chartered Accountants in England and Wales (ICAEW)

## Worldwide study abroad opportunities

Wealth of opportunities at our campuses in UK, China and partner universities across the globe

**5** Star  
rating in  
SETARA  
2018/19

under the mature  
university categories

About  
**5,500**  
students from  
85 countries  
study at Malaysia  
campus

Top  
**100**  
universities  
worldwide

QS World University Rankings 2021

**Sports**  
University  
of the year

The Times and The Sunday Times  
Good University Guide 2021

Over  
**300,000**  
alumni from across  
the globe



Alumni from our UK, China and Malaysia campuses

## Nobel prize-winning academics

University of Nottingham  
academics have won Nobel  
Prizes twice since 2003

**Renowned for our commitment to teaching and learning, we are in the top 100 of universities internationally.\* Recognised globally for teaching excellence, acclaimed for our life-changing research and home to students from all over the world, University of Nottingham is an inspiring place to study and work.**

In 2000 we became the first British university to set up a campus both outside of the UK and in Malaysia, earning University of Nottingham the Queen's Award for Enterprise 2001 and the Queen's Award for Industry (International Trade) 2006.

Since opening, Nottingham Malaysia has welcomed students from across the globe and gained a reputation for world-class research and teaching in arts, engineering, science and social science.

\* QS World University Rankings 2021

**2**  
international  
campuses  
in China  
and the UK



**It starts here**  
**Where it goes**  
**is up to you**

# Contents

Teaching and learning	7
Research	9
Our campus	11
Student life	13
Sporting opportunities	15
Careers	17
Our alumni	19
Services for students	21
Graduate school	23
Accommodation	25
International student support	27
International campuses	29
Funding your studies	31
See for yourself	33

<b>Engineering</b>	<b>35</b>
Research opportunities	36
Chemical and Environmental Engineering	39
Civil Engineering	42
Electrical and Electronic Engineering	44
Mechanical, Materials and Manufacturing Engineering	46
<b>Science</b>	<b>49</b>
Biomedical Sciences	50
Biosciences	53
Computer Science	56
Environmental and Geographical Sciences	59
Pharmacy	62
Psychology	64
How to apply	67
Where to find us	69
Index	71
Get social	73





# Teaching excellence

Students are the heart of the University and learn in an academically-stimulating environment. Students are especially nurtured with regards to personal development, which includes current entrepreneurial and leadership skills. These commitments and their achievement are recognised by the Teaching Excellence Framework (TEF) Gold rating for outstanding teaching achieved in 2017 and Rating System for Malaysian Higher Education Institutions (SETARA) 2018/2019 5-star 'Excellent' for mature university category.

The SETARA rating is further evidence of our strong commitment to the growth of the higher education sector in Malaysia, in providing access to students to earn an international degree with mobility opportunities across campuses in the UK and China. In addition, being part of two quality assurance jurisdictions (QAA\*, UK and MQA\*\*) further strengthens our quality standing, as we are independently evaluated by these agencies. The University is consistently among the highest ranking performers in independent teaching assessments.

## An internationally recognised UK degree

All degrees offered by University of Nottingham Malaysia are University of Nottingham degrees and are subject to the same quality assurance processes as those offered in the UK. You will graduate with a degree from University of Nottingham, irrespective of the campus at which you complete your programme, be it in the UK, China or Malaysia. You will receive a UK-style education and all our degree programmes, coursework materials, and assessments are in English.

## Academic excellence

All academic staff at the University of Nottingham Malaysia are selected based on their excellence in teaching and research. Diversity is our strength. Our highly qualified academic staff members are from the UK, Malaysia and various countries recruited based on open international competition.

respective discipline, they are required to obtain Post Graduate Certificate in Higher Education (PGCHE). Apart from teaching, academic staff members are required to be active in research and publication and be involved in community and international engagement.

## Quality programmes

We offer a comprehensive and varied range of programmes, catering to students at all levels, through foundation, undergraduate and postgraduate to PhD. Our programmes span a range of disciplines and subjects across arts and social sciences, engineering and science. Our degrees are accredited by both the Malaysian and UK quality assurance agencies and by relevant national and international professional bodies such as the Association of MBAs, EQUIS, the UK Engineering Council, the General Pharmaceutical Council (UK), Board of Engineers Malaysia (BEM) and Pharmacy Board Malaysia (PBM).

Our undergraduate and postgraduate taught programmes provide a

structured framework for study. They are based upon a programme of strategic and innovative delivery and assessment mechanisms and also traditional ones such as lectures, seminars and tutorials. Students will normally complete compulsory core modules and will have the opportunity to select from a number of optional modules.

These programmes aim to equip you with a curiosity-driven and deep understanding of your subject, as well as a critical approach and skills relevant to your future career. Our teaching is informed by the very latest research findings and our programmes constantly evolve to incorporate new research developments, with many delivered by research scholars, passionate about their subjects. We also regularly consult with businesses and employers to ensure our programmes are structured with the opportunity to develop key transferable skills for employment.

## Envisioning the global workplace

As an international university we pride ourselves on generating graduates with global attributes for the global workplace. Our student-centred style of learning will equip you with the skills and analytical abilities necessary to thrive in business and industry. Teaching and learning opportunities at Nottingham Malaysia are directly informed by cutting-edge research and technology.

Programme activities are enriched by guest lectures from visiting scholars, research seminars, workshops and student conferences. Classes are led by tutors who are actively involved in extending the boundaries of our knowledge, and who seek to promote a community of learning in which undergraduate and postgraduate teaching feeds directly into a collective and collaborative intellectual endeavour. The relatively small size of our student body with an average staff student ratio of 1:14, allows for a more intimate teaching and learning experience, with academics readily approachable to provide further one-on-one support where needed.

In addition, our personal tutorial system gives you access to academic staff to assist you in any non-academic issues that you may face during your time at University.

 [nottingham.edu.my/teachingandlearning](https://nottingham.edu.my/teachingandlearning)

\* The Quality Assurance Agency (QAA) for Higher Education's independent review of teaching quality in the UK.

\*\* The Malaysian Qualifications Agency (MQA) for quality assurance practices and accreditation of national higher education in Malaysia.





# World-changing research

- Over 400 papers were published by academics in 2018\*
- We currently have a portfolio of more than RM43 million for both internally and externally funded research-related activities.
- 5\* rating from the Malaysian Research Assessment Instrument (MyRA)

\* As submitted to MyRA 2018

## Accolades

Recent awards for our academic staff include: Appointment as Academy of Science Malaysia Fellow (FASc) 2019; Winner of the L'Oréal-UNESCO International Rising Talents award 2018; Winner of the L'Oréal-UNESCO For Women in Science National Fellowship 2019;

Two shortlisted nominees for the Science, Technology and Digital category Women of the Future awards South East Asia 2020.

## Support

We provide extensive support for our academic staff through initiatives such as the Early Career Researcher programme, and workshops organised by the newly formed Research and Knowledge Exchange hub.

We run regular competitions with opportunities for internal funding for various research-related activities.

## Research

Here at Nottingham we deliver research that transforms lives and shapes the future, with a particular focus on addressing the challenges facing South East Asia and beyond.

We currently support more than 300 postgraduates and 280 research-active staff working on a large portfolio of interdisciplinary projects funded by government agencies, non-governmental organisations and companies.

Many of our research projects have international collaborators.

## Future food Malaysia

In the face of climate change we must develop new, resilient crops.

Yields must also increase to feed the additional two billion people expected by 2050.

Better access to healthier, safer, more nutritious food is needed in all countries due the growing prevalence of pollutants, nutrient deficiencies and over-processed foods.

Our research identifies sustainable local solutions in Asia to the global challenge of feeding a growing population in a changing world. We have more than 150 active research projects spanning schools and departments in both faculties.



## Developing sustainable societies

The world is changing in the face of population growth, climate change and diminishing natural resources we must deepen our understanding of changing environments and pioneer new ways to save our precious planet.

Our research seeks solutions towards preserving our environment for a more sustainable future. We have more than 100 active research projects spanning schools and departments in both faculties.

In addition to these major interdisciplinary research themes, we have established research groups and institutes on: digital frontiers, nanotechnology and advanced materials, green technologies, smart manufacturing, aerospace technology, and Inclusion and diversity in the workplace.





# Our campus

Combining beautiful gardens, striking architecture and state-of-the-art learning and research facilities, our University is an inspirational place to live, work and study.

## A strong sense of community

University of Nottingham Malaysia is characterised by its strong sense of community, created by approachable staff, a welcoming student body, excellent support services and a wide range of activities to help you meet new people and feel at home.

## A truly Malaysian setting

We are based on a self-contained site near Semenyih in the state of Selangor, 30 kilometres from Malaysia's capital city, Kuala Lumpur (KL). The beautiful setting and state-of-the-art teaching, learning, research and leisure facilities combine to make an inspirational environment for studying and student life.

Transport is available from the campus to the nearest bus and rail stations, providing easy access to KL and the surrounding region. Kuala Lumpur International Airport is just a 30-minute drive away, making it an ideal base from which to explore locally and further afield.

## Amenities for your convenience

Our self-sufficient campus provides students and staff with a range of amenities. Facilities include:

- 24-hour computer access
- convenience stores
- vending machines
- ATMs
- an extensive library
- a sports complex
- an Islamic Centre
- a health centre
- a creche

Prayer rooms are available 24-hours a day for Muslim students, with a free bus service provided to the mosque in Semenyih for Friday prayers. Buddhist, Christian and Hindu places of worship can be found in Semenyih and university facilities are also available to support and host these activities.

## Eat, drink and socialise

The campus has an indoor and outdoor food court based in the Students' Association Building, which has recently been extended and renovated, providing a wide choice of food for all tastes. The University has also invested money in creating social and learning hubs for students in the Students' Association Building and around campus. These are perfect places to relax and catch up with friends.





# Student life

Our vibrant campus is welcoming and has many events and activities on offer. The Students' Association provides many opportunities to enhance university life, and our facilities enable you to socialise and participate in activities.

Find out more about the Students' Association at

 [sanottingham.org](http://sanottingham.org)

 [sauonm](https://www.facebook.com/sauonm)

 [saunmalaysia](https://www.instagram.com/saunmalaysia)

## Students' Association of UNM

As a student at the University, you are automatically a member of the Students' Association (SA), which focuses on student experience and also acts as the bridge between the student community and University management.

The SA encourages you to get to know your peers and get involved with the wide range of events and activities organised by the SA Executives and its clubs and societies, beginning with Freshers' Week for new students.

The SA receives an annual grant from the University in order to offer activities and improve equipment and facilities for students. We also have the authority to raise additional funds from profits made, by running activities and via business ventures run by students, such as its very own merchandise shop Nott A Shop.

You may choose to take the leadership challenge as an elected student officer in the SA Executive Committee, the Student Council Steering Committee, clubs and societies executive positions, or use your talents to organise or participate in events and activities. Whatever you decide to do, there are ample opportunities available to help develop your skills while enhancing your CV.

## Freshers' Week

The SA aims to provide all new students with a fun-filled Freshers' Week experience. During Freshers' Week you can enjoy various events designed to welcome you to the University, make new friends and experience the diversity. Past activities have included ice-breaking sessions, karaoke, campus-wide treasure hunts, cabaret, bowling, BBQ nights, music jamming sessions and much more.

## Networks

Networks bring together students either to discuss issues of importance or to work together to organise events, campaigns or other forms of value-adding activities to our student community.

Each network is chaired by an SA Executive Officer. Networks are also channels to collectively bring up welfare concerns to the University management while recommending ways to improve and resolve such matters.

Whilst playing a part in creating a green environment, the

Sustainability Network also focuses on activities that are charitable and promote equal opportunity as well as social justice.

The networks under the various executive officers are:

- **Education Network** – Education Officer
- **International Students' Bureau (ISB)** – International Students' Officer
- **Marketing and Communications Network** – Vice President
- **Postgraduate Students' Network (PGSN)** – Postgraduate Officer

- **Sports Network** – Sports Officer
- **Sustainability Network** – Sustainability Officer
- **Welfare Network** –

Home Students' Officer and International Students Officer who deal with:

- Accommodation
- Food
- Health
- Security
- Transport



## Student Council

The Student Council serves as a key component of our student community it is the highest governing and policy setting body of the Students' Association (SA). Council consists of over 40 student representatives who serve in the interest of all students. Councillors serve at various levels across our vibrant student community under the positions of: Student Council Steering Committee, SA Executive Officers, faculty and school representatives, postgraduate representatives, clubs and societies representatives, hall tutors and five random voting members from the student body. Council's roles include the consideration of business affecting the student community, initiation and framing of SA by laws and the regulation of SA policy

## Clubs and Societies

The SA has about 80 clubs and societies covering a wide spectrum of interests:

- Academic
- Creative arts
- Cultural
- Religious
- Special interests
- Sports

It is highly recommended that you become a member of one or more of our clubs and societies to build up your CV and for your own self-development.

## Students' Association Executive Committee

The SA is run by an Executive Committee (EXCO) of nine elected full-time student volunteers holding various portfolios to serve the student community. The EXCO aims to improve the experience of student life by providing representation, development opportunities and quality services for all our students. No matter what is your level of study, your student experience will be taken care of by your elected peers from the time you step into the University until the day you graduate.

To see more of what is happening at our University, visit [nottingham.edu.my/currentstudents](http://nottingham.edu.my/currentstudents)

Positions held by the Executive Committee include:

- Activities Officer
- Education Officer
- Home Students' Officer
- International Students' Officer
- Postgraduate Students' Officer
- President
- Sports Officer
- Sustainability Officer
- Vice President



# Sporting opportunities

As well as an excellent academic reputation, Nottingham is well known for its sporting success and was the winner of *The Times* and *The Sunday Times Good University Guide Sports University of the Year 2019*.



Whether you're passionate about competing or just fancy something new, we've got it covered.

Find out about getting involved in sport at Nottingham:

 [nottingham.edu.my/sport](https://nottingham.edu.my/sport)

## Sports facilities

University of Nottingham Malaysia boasts an impressive range of sports facilities which are free to all students and staff.

Indoor facilities include courts for badminton, basketball, futsal, netball, squash, and volleyball; a fully-equipped gymnasium; and a multi-purpose room for martial arts or table tennis.

Outdoor facilities include a five-a-side football and hockey pitch; a jogging track; a multipurpose field with football, rugby and cricket pitches; a mini archery range; a multipurpose outdoor court suitable for basketball, futsal, and volleyball; and two tennis courts.

We also have a 25m outdoor swimming pool with mixed gender, male and female only sessions.



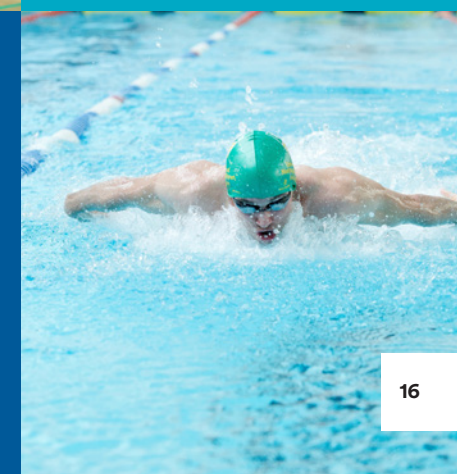
## ← Sports Clubs

The Students' Association (page 13) supports many sport clubs that you can join during your time with us. This includes clubs for archery, badminton, cheerleading, chess, cricket, dodgeball, fitness, football, frisbee, hockey, martial arts, netball, paintball, rock climbing, rugby, squash, swimming, table tennis and volleyball.

## Tri Campus Games

Unique within higher education, our Tri Campus Games see students from each of our Nottingham campuses – Malaysia, the UK and China – competing against each other in several sports. The Games involve nearly 200 students from more than 20 nationalities and are held on a different international campus each year.

Get involved in the games through one of the Students' Association sports clubs or come along and show your fellow students your support!





# Kick start your career

Our experts at Careers Advisory Service offer ongoing support for planning your career throughout your time at university and beyond.

The Careers Advisory Service (CAS) can play an important role in your career development. Our services will provide you with essential resources and guidance for your career choices and offer many opportunities for you to develop the skills needed to plan and manage your future. CAS will help you develop your career by:

- arranging company presentations, field trips, networking events and roadshows
- creating awareness of the importance of career information, resources, skills development and career guidance to fully prepare you for the workplace
- liaising and maintaining close links with potential employers to obtain information on career opportunities, internship and training programmes and competitions
- maintaining good relationships and excellent collaborations with potential employers for the benefit of students, employers and the University
- organising events such as career fairs and career talks to provide invaluable opportunities to meet potential employers
- preparing you for the working world by providing advice on matters such as CV, cover letter writing, interview and job hunting skills
- providing access to dedicated online and printed careers information on relevant occupations, employers and further study through the Careers Resource Centre
- providing you with the necessary knowledge to manage your career expectations and enhance your employability



 careers@nottingham.edu.my  
 UNM Careers  
 UNM Careers  
 blogs.nottingham.edu.my/careers  
 nottingham.edu.my/careers



# Our global community



As a graduate of the University of Nottingham, you will join our global community of over 300,000 alumni which includes pioneering scientists, international policymakers, leaders of national charities, CEOs, novelists, Olympic Gold medallists and a Nobel Prize winner.

## Our alumni

Graduates of the University of Nottingham automatically become members of our global alumni community, enabling access to these extensive services:

- alumni reunions
- lifelong access to the Careers Advisory Service
- masterclasses
- mentoring programmes
- recognition through Alumni Laureate Awards
- social networking events

 [nottingham.edu.my/alumni](https://nottingham.edu.my/alumni)

## Alumni Online

Join our online alumni community to find and stay in touch with friends, enquire about the latest alumni-exclusive events, gain access to social networking sites, subscribe to newsletters and receive the alumni magazine.

 [alumni.nottingham.ac.uk/netcommunity](https://alumni.nottingham.ac.uk/netcommunity)

## Follow us at:

-  @unmalumniofficial
-  UNM\_Alumni
-  @unmalumniofficial

## Notable alumni

We are proud of the contributions that our alumni make to society. Here are what some of them have gone on to do:

- **Dr Deng Yaping** - Olympic Gold Medallist
- **DH Lawrence** - Novelist and poet
- **Dr Stewart Adams OBE** - Pharmacologist and inventor of ibuprofen
- **DYMM Tuanku Zara Salim** - Raja Permaisuri (Queen) of Perak
- **H. E. Datin Paduka Nur Ashikin Mohd Taib** - Ambassador at the Embassy of Malaysia to Sweden
- **John Rishton** - former CEO of Rolls-Royce Limited
- **Mohamed Firzul Hussain Firaz** - Deputy Minister of Finance, Ministry of Finance, Maldives
- **Molly Fong** - CEO of The Body Shop (West Malaysia and Vietnam)
- **Nishtha Satyam** - Deputy Country Representative, UN Women, India, Bhutan, Maldives and Sri Lanka
- **Sir Andrew Witty** - Former Chancellor of the University of Nottingham and former CEO of GlaxoSmithKline
- **Sir Clive Granger** - economist and Nobel Prize Winner (2003)
- **Sir John Sawers** - former Chief of the Secret Intelligence Service (MI6)
- **The late DYMM Sultan Azlan Muhibbuddin Shah ibni Almarhum Sultan Yussuff Izzuddin Shah Ghafarullahu-lah** - former King of Malaysia and former Sultan of Perak
- **The late DYMM Tuanku Ja'afar ibni Almarhum Tuanku Abdul Rahman** - former King of Malaysia and former Yang di-Pertuan Besar of Negeri Sembilan
- **YAM Tuanku Tan Sri Dato' Seri Imran ibni Almarhum Tuanku Ja'afar al-Haj** - son of the former King of Malaysia and Malaysian sports administrator



# Your support network



## Academic and practical support

### Library resources

The library has a comprehensive collection of books to meet the taught programmes offered by the University. The library also has a wide spectrum of electronic and information resources, including subject-based reference enquiry, internet subject gateway and subject focused academic support services. Electronic resources can be accessed anywhere via internet.

 [nottingham.edu.my/thelibrary](https://nottingham.edu.my/thelibrary)

### Student Service Centres

The Student Services Centre located in the Students' Association building helps you with accommodation, campus services, finance, sponsorship, support services, registry, and visa queries. For faculty matters you will need to visit your faculty office.

### Student registry

The Student Registry Office oversees administrative matters that concern students, including issuing letters, processing withdrawal and suspension applications, producing official transcripts and certificates, maintaining the student records database, updating student details, setting the academic calendar, managing and updating programme information.

 [nottingham.edu.my/studentregistry](https://nottingham.edu.my/studentregistry)

### Academic and personal tutoring system

At the start of each semester you will meet your personal tutor and may turn to them for advice for related matters.

### English language support

The Centre for English Language Education provides English language support for all students who need it through our free in-session classes.

 [nottingham.edu.my/celfe](https://nottingham.edu.my/celfe)

### IT services

IT Services provide a range of facilities both on campus and off campus. These include computer rooms, video conferencing facilities, print, copy and scanning facilities, and student portals for accessing study materials.

 [nottingham.edu.my/IT-Services](https://nottingham.edu.my/IT-Services)



## Health and wellbeing

### University Health Centre

We offer healthcare, a pharmacy, GPs, physiotherapy laboratory tests and referrals to hospitals.

 [nottingham.edu.my/healthcentre](https://nottingham.edu.my/healthcentre)

### Counselling and mental health

Our free and confidential counselling service provides emotional support, self-help resources and individual counselling consultation where appropriate.

### Academic and disability Support



We can help with personal and academic issues affecting your studies, managing your time, dyslexia support and support for other specific learning differences, as well as arranging support and access for disabled students.

 [nottingham.edu.my/wellbeing](https://nottingham.edu.my/wellbeing)

### Faith provision

Prayer rooms are available 24 hours for Muslim students on the ground floor of the Computer Centre and Islamic Centre. The nearest mosque is in Semenyih and a free bus service is provided for Muslim students for Friday prayers. Buddhist, Christian and Hindu places of worship are located in Semenyih and our facilities are also available to support and host these activities.



# Your Graduate School

The Graduate School is committed to enhance the research experience of our postgraduates and early-career research staff as well as your personal career development by providing you with the skills and confidence to maximise your potential at the University of Nottingham Malaysia and beyond.



## “Your potential, our support – the possibilities are endless”

Postgraduates are central to our research mission. We provide a year-round programme of social and academic-related events, as well as personal and professional support. Our dedicated team of trainers is committed to working with you to ensure you receive all the support and skills training you need to fulfill your potential.

We offer a dedicated postgraduate hub, a range of resources and development opportunities, training programmes, seminars, competitions and public engagement activities. Our hub includes a social space where you can come and relax, have a break from work or study, meet other postgraduates and early-career researchers and develop a constructive network of friends and colleagues.

## Your Researcher Development

Our Researcher Development Programme delivers dedicated core training that is in line with the standards set out by the UK's major research funders. This means that as well as helping you to develop your research skills, you'll have access to a wide range of professional development opportunities, covering communication skills, careers, time management and entrepreneurship. You'll also have the chance to meet and work alongside leading researchers from other disciplines.

We also support your professional development via our Postgraduate Student Teachers programme. The programmes are aligned to the Professional Standard of Framework (PSF) areas of activity, core knowledge and professional values. The PSF is designed specifically for teaching and supporting learning in higher education.

## External Engagement

Our range of outreach activities gives you unique opportunities to engage with the community and with professional leaders from different industry sectors. You'll find it not only interesting, but also rewarding and lots of fun. External engagement also inspires creativity and innovation, generates public awareness and is a great way to enhance the impact of your research.

## Travel and Mobility

We offer a number of competitive financial awards to support you in presenting your research at an international conference or to conduct some of your research abroad. We also have a Graduate School in China and Graduate Centres at our UK campus which you can use should you spend any time there.



 [graduateschool@nottingham.edu.my](mailto:graduateschool@nottingham.edu.my)

 UNMCGradSchool

 [nottingham.edu.my/gs](http://nottingham.edu.my/gs)



# Your perfect home

Finding the right place to live while you study is an important consideration in your choice of university. Our Accommodation Office offers a free and friendly service in helping you find a place to live that not only suits your needs but lets you get on with university life – both studying and having fun.

## On-campus accommodation options

We offer various room types within our 11 halls of residence with total 2,352 beds (approximately 2350) to suit your budget. The rooms range from single ensuite, twin share to four shared bedrooms. All the halls are within easy walking distance to the academic buildings, sports facilities, food, retail and leisure facilities. Each residential hall has its own Hall Wardens (staff) and Hall Tutors (postgraduate students) who will be available to provide assistance related to your safety and welfare.

### Facilities and services include:

- free room cleaning services
- free room repair and maintenance services
- communal student hub\*
- convenience store\*
- coin-operated laundromat
- mini fridge in each room\*
- outdoor gym
- pantry facilities
- 20 GB per day wireless internet connection
- TV and dance studio - Nexus Building\*

\* only available in student village north (J1-J6)

Accommodation fees include water, electricity and internet connection. The room rental will be billed on a quarterly basis and students in air-conditioning rooms will be billed on a quarterly basis for air-conditioning usage exceeding 200kWh based on a separate meter reading.

Coin operated laundry washing machines and dryers are available at both Student Village North and South. Clothes line and drying areas are also available within the residential halls. Students can use the coin-operated launderette services at own expenses.

## Students with specific requirements

If you have a physical disability or special needs, kindly indicate and provide written supporting documentation or medical reports from a registered physician/doctor when applying via OLAA. These will be forwarded to our Student Wellbeing and Learning Support for further advise and assessment. You may also indicate your room preference to be within an "all female" hall of residence.

## How to apply

New students may apply for on-campus accommodation as soon as you have your University student ID which is usually issued after you have submitted your programme application.

Current students who are progressing/continuing their studies are encouraged to apply for the new academic year starting in September and enjoy the option to request for the same room in the new academic year.

On-campus accommodation will be allocated to Returning Residents based on availability of a room and on a "first come, first served with payment basis".

### Find out more



+60 3 8924 8604



accommodation@nottingham.edu.my



nottingham.edu.my/accommodation

### Room types

Deluxe single en-suite bathroom with air-conditioning\*

### Codes

DSEB A/C

### Room Rates (per month)

RM750

Single en-suite bathroom with air-conditioning

SEB A/C

RM680

Single shared en-suite bathroom with air-conditioning

SSEB A/C

RM615

Single shared bathroom in five room flat with air-conditioning

SSB A/C

RM585

Single shared en-suite bathroom

SSEB

RM510

Single shared bathroom in five room flat

SSB

RM480

Twin shared in six bed flat

TWIN

RM455

Four shared bedroom

QUAD

RM395

\* only located at student village north (J1 - J6)



As long as you have your Student ID, you can register with OLAA, the University's on-line accommodation application portal, which will allow you to:

- preview and select various room types available
- indicate your tentative arrival date and time
- submit your application
- manage your offer (accept, decline or apply for an extension)

OLAA will also provide you with other important information on how and when you can check-in.

## Preferences and Allocation

Different room types are available to suit your budget and preference. Applicants must prioritise their choice of room type from 1 (first to 5 (fifth)). Accommodation office cannot process your application if you have selected less than five choices. Kindly be reminded that we follow a "first come, first served with payment" policy to confirm the room type.

Apply here



applyaccommodation.nottingham.edu.my

In the event that you do not get your preferred room type, you are recommended to accept what is been offered and have the chance to apply for room transfer after check in. The request will be processed according to room availability due to "No Show".



# “Selamat Datang, Huān Yíng and Vanakkam!”

University of Nottingham Malaysia welcomes you to one of the most diverse nations in Asia.

## Welcome to Malaysia

Covering an area of 127,350 square miles, Malaysia consists of two regions separated by the South China Sea: Peninsular Malaysia and Malaysian Borneo (also known as West and East Malaysia respectively). Peninsular Malaysia extends southeast from the border of Thailand. Malaysian Borneo consists of the states of Sabah and Sarawak which are located on the north-western coastal region of the island of Borneo. The country's population is over 30 million to date.

Malaysia is a country with a unique blend of cultural influences and ethnic groups. The country is home to three main ethnic groups: Malays, Chinese and Indians, as well as the native Orang Asli.

Having been colonised by the Portuguese, Dutch and British, see these influences in the architecture, hear them in Malay language and taste them in the internationally-acclaimed Malaysian cuisine. Visitors to Malaysia are also left awestruck by the tropical beauty of the country - with pristine beaches, some of the world's best underwater wildlife, ancient rainforests and UNESCO world heritage sites to explore, nature enthusiasts will find an exciting home in Malaysia.

## The capital city

The Malaysia campus is a 45-minute drive away from Kuala Lumpur (KL), one of Asia's most vibrant cities. KL is a true metropolis with some of the world's tallest buildings, largest shopping havens and modern infrastructure. However, Kuala Lumpur also has pockets of historical sites, traditional villages (known as kampung) and greenery which are fun to explore on the weekends. The city is served by a comprehensive transportation system including buses, trains, a monorail and a number of airports.

Kuala Lumpur lies in the heart of Southeast Asia, and due to the number of low-cost and international carriers transiting in the country, it is an inexpensive starting point for travel around Southeast Asia and Australia.

## International student support services

Our international student support service promotes the wellbeing and social interaction of international students. We provide invitations for visas and opening bank accounts, advice on any problems you have with living and studying in Malaysia and information on the professional support services available at the University.

## Medical insurance

Medical insurance coverage is compulsory and arranged for you by International Student Support department. The coverage takes effect from the point of registration on campus.

 [nottingham.edu.my/international/health-and-insurance](https://nottingham.edu.my/international/health-and-insurance)

## Student visa support

All non-Malaysian nationals who wish to study at an educational institution in Malaysia are required to hold a valid Student Pass. We assist international students in arranging dependant passes for spouse or family members, renewing the student visa while transferring schools within Malaysia and any other visa-related issues.

 [apply.visa@nottingham.edu.my](mailto:apply.visa@nottingham.edu.my)

(Only for new student enquiry)

 [visarenewal@nottingham.edu.my](mailto:visarenewal@nottingham.edu.my)

(Only for existing students with student pass)

## Airport pick-up

We offer an airport pick-up service for new international students on designated days prior to the registration week. Email us at:

 [international.support@nottingham.edu.my](mailto:international.support@nottingham.edu.my)

## Meet us

Members of the International Office frequently travel to different countries to meet with prospective students and their families. We also have overseas representatives in a number of countries who can help you find the right programme, and offer support and advice through the application process. If you would like to visit the University in person, we will be happy to arrange it for you.

 [nottingham.edu.my/international/overseas](https://nottingham.edu.my/international/overseas)

If you are an international student with a query about studying with us in Malaysia, please contact us:

 +60 3 8924 8686

 [nottingham.edu.my/make-an-enquiry](https://nottingham.edu.my/make-an-enquiry)

 [nottingham.edu.my/international](https://nottingham.edu.my/international)



# Our international campuses

During your time with us, you might have the chance to study at one of our campuses in the UK or China. All our campuses offer a warm and friendly environment, interesting landscapes and first-rate facilities.

## Jubilee Campus, UK

### UK campus

#### Jubilee Campus

Jubilee Campus opened in 1999 and is just one mile from University Park. It is an exemplar in sustainable brownfield regeneration and has won numerous awards for its environmentally friendly design. The modern, purpose-built buildings include teaching and research facilities, residences, retail, social and support amenities, libraries and a sports hall.

Aspire, one of the country's tallest free-standing works of public art, soars to 60 metres above the campus. The adjoining Innovation Park was launched in 2008 and continues to expand and evolve, hosting specialist facilities for global satellite navigation systems, renewable energy technologies, mental health research and aerospace technologies.

## University of Nottingham Ningbo China

### China Campus

#### University of Nottingham Ningbo China

China campus became the first British university to establish and run a campus independently within mainland China when the first intake of students were admitted in 2004.

Around two-and-a-half hours by car from Shanghai, the China Campus is based at the Higher Education Park in Ningbo, a historic port city on China's eastern coast. The campus covers 144 acres of landscaped parkland, with a central lake and its own version of Nottingham's famous Trent Building. There are academic, residential and support facilities for almost 8,000 students.

### UK campus

#### University Park Campus

Set around a lake with beautifully kept gardens, the 330-acre University Park is the University's principal campus. Receiving Green Flag Award status every year since 2003, it is one of the most attractive campuses in the country and features a mixture of period buildings and modern teaching and research facilities, with 12 halls of residence, a conference and exhibition centre, sports facilities and Nottingham Lakeside Arts.

## University Park Campus

## Sutton Bonington Campus

### UK campus

#### Sutton Bonington Campus

Located in the beautiful countryside of south Nottinghamshire, Sutton Bonington Campus occupies a spacious 100-acre site with its own teaching and learning facilities, sports centre, student guild, social amenities and halls of residence.

Ten miles south of University Park, the campus benefits from state-of-the-art teaching and research facilities. The campus also houses the School of Veterinary Medicine and Science which opened in 2006 as the first in Britain for more than 50 years.





# Our scholarships

**University of Nottingham Malaysia grants scholarships to deserving and academically excellent students. Applicants are selected based on their academic achievement and the socio-economic status of their family. In addition, there are various sources of financial assistance available to help fund your education.**

## Automatic scholarships

We offer several automatic scholarships for alumni of University of Nottingham, children of alumni, siblings, spouses and alumni of Universitas 21 (U21) institutions.



+6 (0)3 8924 8609



[sponsorship@nottingham.edu.my](mailto:sponsorship@nottingham.edu.my)



[nottingham.edu.my/scholarships](http://nottingham.edu.my/scholarships)

## Science and Engineering Scholarship

Postgraduate research scholarships to eligible students and application will be reviewed by the Committee on case-by-case basis

## Financial assistance

Postgraduate students may also seek funding through the Employees Provident Fund (EPF) Withdrawal Scheme for Education.

Students with outstanding academic results can also seek sponsorship from other sponsoring bodies.







# See for yourself



## Independent visits

You are welcome to arrange a visit to the campus and meet our staff for more information. Please contact us to arrange for a visit.

 [nottingham.edu.my/make-an-enquiry](https://nottingham.edu.my/make-an-enquiry)



## Open days

Each year we run open days, information days and counselling sessions where you can visit our campus, experience our facilities, meet students and staff, attend talks and presentations as well as participate in activities.

Some faculties and schools also run their own open days throughout the year.

 [futurestudents.nottingham.edu.my](https://futurestudents.nottingham.edu.my)

## Education fairs

We participate in a number of education fairs throughout the year all over Malaysia. You can talk to our staff to find out the University and our programmes.

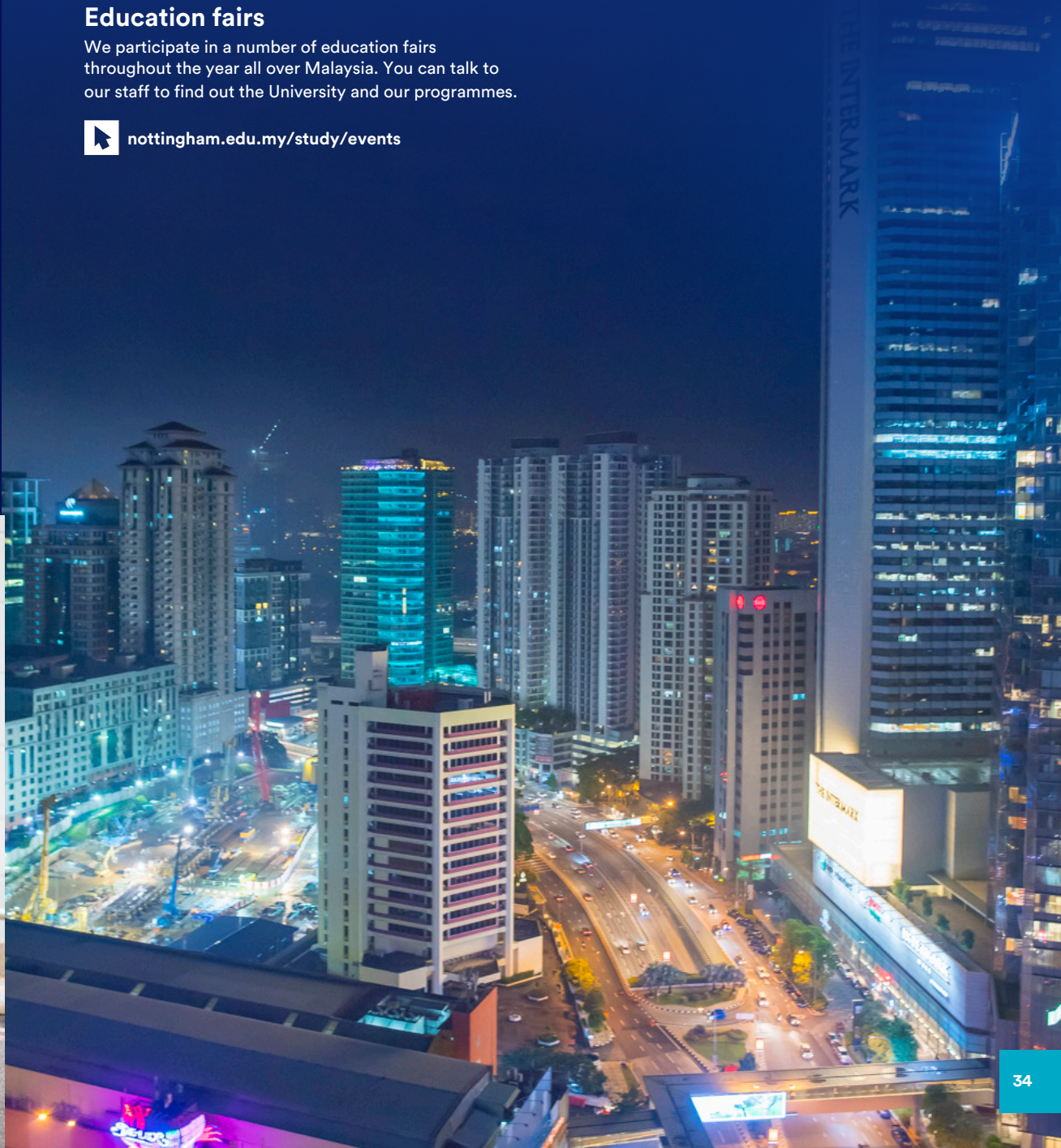
 [nottingham.edu.my/study/events](https://nottingham.edu.my/study/events)

## Meet us in your country

Members of our International Office visit many countries to meet prospective students and attend international exhibitions. We also work with a number of international academic services, educational agencies and counsellors in countries across the globe.

These agents and counsellors can help you to find the right programme, providing support and advise throughout the application process.

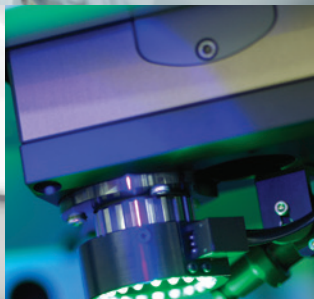
 [nottingham.edu.my/overseasrepresentatives](https://nottingham.edu.my/overseasrepresentatives)





# Engineering

Research opportunities	36
Chemical and Environmental Engineering	39
Civil Engineering	42
Electrical and Electronic Engineering	44
Mechanical, Materials and Manufacturing Engineering	46



## Engineering



### Teaching and learning

Engineering offers a range of high-quality programmes which are well resourced both in terms of facilities and quality of the programmes offered:

- Chemical and Environmental Engineering (see page 39)
- Civil Engineering (see page 42)
- Electrical and Electronic Engineering (see page 44)
- Mechanical, Materials and Manufacturing Engineering (see page 46)

Engineering solutions are all around us, enabling us to live better and longer lives. We need the right people if we are to continue to innovate. People who can challenge, people who can create, and people who can apply new knowledge in new products and processes. The University is committed to provide students an unrivalled quality and excellence, strength and pragmatism, boldness and innovation, respect and tolerance. Graduates can expect to take up leading roles in well-known companies worldwide.

### Research

We are one of the top five research-led universities in engineering in the UK, and Nottingham Malaysia plays an integral part in research activities of the University. Nottingham Malaysia has a significant number of research awards, intellectual property rights, technology transfer and consultancy projects.

Many of our researchers are internationally renowned leaders in their respective disciplines.

The Faculty of Science and Engineering (FOSE) encourages interdisciplinary research and is organised under different research clusters, as outlined below. These clusters focus on both fundamental and application-driven research, and they create an exciting synergy from diverse expertise and perspectives.



### At a glance

- As well as being taught by researchers at the leading edge of their field, you will also develop the essential skills necessary to embark on a fulfilling career as an engineer.
- We continually expand our programmes both in response to changes in society and to integrate the very latest research findings.
- Engineering is one of the strongest faculties in the University of Nottingham, with all engineering departments recognised as being among the best in higher education.

All entry requirements, fees, school and programme information are intended as a guide and were accurate at the time of printing. For the most up to date information and further details of each programme, please visit [nottingham.edu.my/pgstudy](http://nottingham.edu.my/pgstudy)

- +60 3 8924 8686
- [nottingham.edu.my/make-an-enquiry](http://nottingham.edu.my/make-an-enquiry)
- [unm.science.engineering](http://unm.science.engineering)
- UoNMalaysia
- [nottingham.edu.my/engineering](http://nottingham.edu.my/engineering)



## Research Expertise

- Advanced Materials
- Aerospace
- Artificial Intelligence and Advanced Data Analysis
- Automated Integrated System
- Brain and Cognition
- Digital Environment
- Food
- Green and Renewable Technologies
- Health
- Nanotechnology

- Pure and Applied Mathematical, Physical and Computer Sciences
- Sustainable Ecosystem and Communities
- Sustainable Structure and Infrastructure
- Tropical Environment



Engineering	Duration	Intake	Malaysian fees	International fees
Research opportunities				
<b>MPhil</b> KPT/JPS(N/520/7/0085)7/21	1-2 years full-time 2-4 years part-time	February, April, June and September	RM45,100 per year*	RM53,100 per year*
<b>PhD</b> KPT/JPS(N/520/8/0086)7/21	3-4 years full-time 6-8 years part-time	February, April, June and September	RM45,100 per year*	RM53,100 per year*

\* Part-time students pay half the full-time fee for each year.

## Research opportunities

## MPhil/PhD

We offer high-quality doctoral training to postgraduate students who wish to pursue an MPhil or PhD. As a research student, you will work under a supervisor(s) who will assist you in your research and thesis design.

By undertaking postgraduate level study, you will work towards the enhancement of a variety of skill sets:

- awareness in specialised areas
- design and development of experimental techniques
- development of communication and presentation skills
- development of methodological skills
- the ability to work independently and solve problems creatively

If you are interested in applying, we would recommend that you familiarise yourself with our research areas and staff expertise and then contact us to discuss your research project proposal with the relevant supervisor in the first instance. Please visit our applications pages to find out how to apply.



**nottingham.edu.my/applications**

Entry requirements	English language requirements
<p><b>PhD</b></p> <p>A master's degree (or international equivalent) with an average mark of 60% and above plus, an upper second class honours degree (or international equivalent) in computer science, engineering, mathematics, physics or other related disciplines. Non-UK qualifications will be assessed against this standard.</p> <p>or</p> <p>A first class honours degree (or international equivalent) in computer science, engineering, mathematics, physics or other related disciplines. Non-UK qualifications will be assessed against this standard.</p>	<p>IELTS (Academic): 6.0 (with no less than 5.5 in each element)</p> <p>TOEFL (iBT): 79 (minimum 17 in Writing and Listening, 18 in Reading, 20 in Speaking)</p> <p>PTE (Academic): 65 (with no less than 59 in each element)</p> <p>MUET: Band 4</p>
<p><b>MPhil</b></p> <p>An upper second class honours degree (or international equivalent) in computer science, engineering, mathematics, physics or other related disciplines. Non-UK qualifications will be assessed against this standard.</p>	

Please also refer to our entry requirement guidelines on page 67.





### At a glance

- The Department of Chemical and Environmental Engineering is a leading centre for the development of industrial processes and applications in energy, sustainability and environmental engineering.
- Our taught postgraduate programmes produce high-quality engineers with the advanced skills and training demanded by industry and organisations all over the world.

All entry requirements, fees, school and programme information are intended as a guide and were accurate at the time of printing. For the most up to date information and further details of each programme, please visit [nottingham.edu.my/pgstudy](http://nottingham.edu.my/pgstudy)

+60 3 8924 8686

[nottingham.edu.my/make-an-enquiry](http://nottingham.edu.my/make-an-enquiry)

UNM Chemical and Environmental Engineering

UoNMalaysia

[nottingham.edu.my/engineering/chemical](http://nottingham.edu.my/engineering/chemical)

# Chemical and Environmental Engineering

## Teaching and learning

The modern world is reliant on innovative technology to make products, harvest and conserve resources, and use energy efficiently.

The Department of Chemical and Environmental Engineering is a leading centre for research and teaching aimed at developing such creative and efficient technologies. The Department devises an innovative approach to teaching and student support, and this structured support framework allows students to develop advanced technical competence. Staffs are widely recognised for their excellence research performance, by winning various national and international awards. These include the IChemE Innovator of the Year Global Award, Asia Pacific Young Drying Scientist Award, SCEJ Outstanding Asian Researcher, Top Research Scientist Malaysia, IEM Young Engineer Award, IChemE Young Academic Award, JCI The Outstanding Young Malaysian, etc. Besides, they also serve as editors for various international renown research journals.

MSc dissertation topics are usually offered in the following areas of research, which reflect the expertise of the department staffs:

- Bioprocess engineering
- Food and bioprocessing
- Nanotechnology and advanced materials
- Palm oil processing
- Process design and optimisation
- Waste treatment, management and recycling

## Professional accreditation

The MSc Chemical Engineering is accredited by the Institution of Chemical Engineers (IChemE).

## Career prospects

MSc Chemical Engineering graduates have found jobs in a range of industries including consultancy, environmental protection, food, management, nanotechnology, oil and gas, and petrochemicals. MSc Environmental Engineering graduates are well suited for careers in companies hiring environmental consultants or in-house environmental experts in order to stay ahead of environmental restrictions and legislation. Both programmes also aim to provide a strong foundation for further study to PhD level and the pursuit of a career in research.

Chemical and Environmental Engineering	Duration	Intake	Malaysian fees	International fees
<b>Taught programmes</b>				
<b>MSc Chemical Engineering</b> KPT/JPS(R/524/7/0012)/11/21	1 year full time 2 years part time	September	RM53,300 per programme	RM59,900 per programme
<b>MSc Environmental Engineering</b> KPT/JPS(R/526/7/0025)/1/23	1 year full time	September	RM53,300 per programme	RM59,900 per programme

## Taught programmes

### MSc Chemical Engineering

The programme has been designed to assist holders of relevant degrees in science and engineering to upgrade their academic qualifications and enhance their professional standing. You will gain skills in advanced engineering practice, which includes design, operations, problem-solving and practical elements. The advanced practice is centred on themes in energy and environmental applications, so you can also gain significant experience in areas such as carbon capture, energy efficiency, food and pharmaceutical engineering, nanotechnology, process optimisation and water treatment.

### Programme structure

The programme is operated on a modular basis and consists of two semesters during which you will follow a series of taught modules followed by an individual research project, undertaken during the summer period. You will be taught using the latest advances in teaching methods and electronic resources. You must choose modules worth a total of 70 credits. To meet IChemE's further learning requirement, you must include 40 credits of specified modules designated as chemical engineering depth. You must also complete the Introduction to Postgraduate Research module (20 credits) and the Accelerated Design Training (30 credits) before undertaking an Individual Research Project (60 credits), leading to a total of 180 credits for the programme. If you have taken any of the modules as part of a BEng/ MEng degree programme at the University of Nottingham, you are not allowed to take those modules for a second time.

### Typical core modules

- Accelerated Design Training
- Individual Research Project
- Introduction to Postgraduate Research

### Optional depth modules

- Advanced Biochemical Engineering
- Advanced Computational Methods
- Advanced Process Control
- Advanced Reaction Engineering
- Advanced Rheology and Materials
- Computational Fluid Dynamics
- Process Design and Optimisation
- Process Synthesis and Design

### Optional breadth modules

- Advanced Environmental Assessment
- Air Pollution
- Contaminated Land
- Fats and Oils Processing Technology
- Food Processing Technology
- Nanotechnology
- Palm Oil and Oleochemicals
- Petroleum Refining and Gas Processing
- Power Generation and Carbon Capture
- Professional Engineer in Society
- Process Simulation
- Statistical Process Control and Quality Management
- Water Treatment Engineering



## MSc Environmental Engineering

The MSc Environmental Engineering is aimed at students who have an interest in environmental engineering but initially undertook a more mainstream undergraduate programme. It is ideal for those who want to specialise in environmental engineering after graduating from their undergraduate degree or after working in the environmental engineering field. The syllabus covers a number of traditional subjects which you can choose from, such as air pollution, contaminated land and water treatment. The compulsory part of the programme concentrates on developing and improving research, teamwork and communication skills in a context relevant to environmental engineers.

### Programme structure

You will take a mixture of module choices from a restricted list of traditional environmental engineering subjects and from free-choice options from across the campus, enabling you to build your own multidisciplinary syllabus. You will also be required to complete a Group Design Project with relevance to environmental engineering. You must pass all the components in the autumn and spring semesters, comprising 120 credits, to progress to the final stage of the Individual Research Project. The Individual Research Project is worth 60 credits and occupies the entire summer semester.

#### Typical core modules

- Accelerated Design Training
- Advanced Environmental Field Course
- Individual Research Project
- Introduction to Postgraduate Research

#### Typical optional modules

- Advanced Environmental Assessment
- Air Pollution or Air Pollution 2
- Contaminated Land
- Free Choice\*
- Hazardous Waste Management
- Power Generation and Carbon Capture
- Water Treatment or Water Treatment Engineering

\* Students may choose modules from any other programme provided it is approved by the Programme Director.

#### Entry requirements

##### MSc Chemical Engineering

An upper second class honours degree (or international equivalent) in chemical engineering or a related discipline. Non-UK qualifications will be assessed against this standard.

##### MSc Environmental Engineering

An upper second class honours degree (or international equivalent) in engineering or science subjects. Non-UK qualifications will be assessed against this standard.

#### English language requirements

IELTS (Academic): 6.0 (with no less than 5.5 in each element)

TOEFL (iBT): 79 (minimum 17 in Writing and Listening, 18 in Reading, 20 in Speaking)

PTE (Academic): 65 (with no less than 59 in each element)

MUET: Band 4

Please also refer to our entry requirement guidelines on page 67.

## Civil Engineering

### Teaching and learning

At the University of Nottingham Malaysia, you will follow the same high-quality degree curriculum that has helped civil engineering at the University of Nottingham to be consistently rated among the top civil engineering schools in the UK. We have strong links with industry professionals and at Masters level, we deliver world-class teaching that reflects the research interests of our academic staff. This ensures programme content represents state-of-the-art research and up to date developments. It also enables MSc students to work on projects that contribute to the ongoing research in the faculty.

### Professional accreditation

Our MSc programme is accredited by the Joint Board of Moderators (Chartered Institution of Highways and Transportation, Institute of Highway Engineers, Institution of Civil Engineers, Institution of Structural Engineers). The programme also meets the requirements for Further Learning for a Chartered Engineer (CEng) for those who have already acquired an accredited CEng (partial) BEng (Hons) undergraduate degree.

### Career prospects

Career destinations for MSc Civil Engineering graduates include civil engineers, design and development engineers.



### At a glance

- Our programme is informed by the world leading research that ranked the Faculty of Engineering 3rd in the UK for research power in engineering, in the Research Excellence Framework 2014.
- We are recognised for our world-class learning environment and have an international reputation for new knowledge generation.

All entry requirements, fees, school and programme information are intended as a guide and were accurate at the time of printing. For the most up to date information and further details of each programme, please visit [nottingham.edu.my/pgstudy](http://nottingham.edu.my/pgstudy)



+60 3 8924 8686



[nottingham.edu.my/make-an-enquiry](http://nottingham.edu.my/make-an-enquiry)



UNMC.civil



UoNMalaysia



[nottingham.edu.my/engineering/civil](http://nottingham.edu.my/engineering/civil)



Civil Engineering	Duration	Intake	Malaysian fees	International fees
<b>Taught programmes</b>				
<b>MSc Civil Engineering</b> UNM/KPM-JPT(R2/526/7/0086)9/24	1 year full time	September	RM53,300 per programme	RM59,900 per programme

## Taught programmes

### MSc Civil Engineering

Our MSc Civil Engineering provides a comprehensive programme of study across a range of subject areas. You may prefer to opt for a more specialised approach by choosing specific modules in the area of your interest in the first two semesters. Furthermore, you could focus your research project in the same area. You may choose from these research areas: environment, geotechnical engineering, management, pavement engineering, structural engineering, and transportation and water resources.

### Programme structure

The programme consists of 120 credits of core and optional taught modules along with a 60-credit major individual research-based project. In addition to the core modules, you will be able to choose from a number of optional modules to create a more generalised path of study for the award of MSc Civil Engineering or to augment your degree with a specific area of interest. Following the successful completion of the taught modules, the major individual project is undertaken over the summer term.

Entry requirements	English language requirements
An upper second class honours degree (or international equivalent) in civil engineering or a related discipline. Non-UK qualifications will be assessed against this standard.	IELTS (Academic): 6.0 (with no less than 5.5 in each element)
	TOEFL (iBT): 79 (minimum 17 in Writing and Listening, 18 in Reading, 20 in Speaking)
	PTE (Academic): 65 (with no less than 59 in each element)
	MUET: Band 4

Please also refer to our entry requirement guidelines on page 67.

#### Typical core modules

- Research Project
- Research Project Preparation

#### Typical optional modules

- Advanced Structural Design
- Construction Planning and Processes
- Construction Project Management
- Dynamic and Wind Engineering
- Finite Element Analysis in Structural Mechanics
- Geotechnical modelling
- Highway and Pavement Design
- Railway Technology
- Sustainable Construction and Life Cycle Analysis
- Tall Building Group Design Project

# Electrical and Electronic Engineering

## Teaching and learning

From IC chips to iPads, from IoT to autonomous systems, we are surrounded and empowered by products based on electrical and electronic engineering. Nottingham is one of the leading universities offering an Electrical and Electronic Engineering. The Department of Electrical and Electronic Engineering was one of the first departments to be established at the University and our academic staff have an extensive research portfolio. The department is built on a strong foundation with a wealth of experience from the department in the UK, which was established in 1933. We have close links with industry, especially with our campuses in the UK and China.

## Career prospects

Electrical and Electronic Engineering continue to be buoyant industries. The MSc in Electrical and Electronic Engineering offers excellent career opportunities in microelectronics industry, system integrators, design and software development companies, IoT and automation solution companies, mobile communications manufacturers, wireless and wired telecommunications companies. Some graduates enter the management and commerce sector, or software and IT, while others pursue PhD programmes or work in the academic field.

## At a glance

- Our postgraduates gain an important mix of scientific, technical and professional skills and are highly competitive on the global arena.
- We have links with a range of companies which provide exciting opportunities for industrial collaboration. These include: Dyson, Intel, MIMOS Berhad, Motorola Solutions Malaysia, Rohde and Schwarz, Significant Technologies, and Telekom Malaysia.

All entry requirements, fees, school and programme information are intended as a guide and were accurate at the time of printing. For the most up to date information and further details of each programme, please visit [nottingham.edu.my/pgstudy](http://nottingham.edu.my/pgstudy)

- +60 3 8924 8686
- [nottingham.edu.my/make-an-enquiry](http://nottingham.edu.my/make-an-enquiry)
- UNMelectrical
- UoNMalaysia
- [nottingham.edu.my/engineering/electrical](http://nottingham.edu.my/engineering/electrical)



Electrical and Electronic Engineering	Duration	Intake	Malaysian fees	International fees
<b>Taught programmes</b>				
<b>MSc Electrical and Electronic Engineering</b> UNM/KPM-JPT(N/522/7/0084)5/24	1 year full time	September	RM52,000 per programme	RM59,900 per programme

## Taught programmes

### MSc Electrical and Electronic Engineering

The MSc Electrical and Electronic Engineering is designed to provide instruction and training in the most recent developments in the areas of technology covering electrical, electronics and computer engineering. It aims to provide you with advanced and comprehensive coverage of the specialist skills required by an engineer working in the hardware and software and design aspects of microelectronic engineering, electronic instrumentation, electronic systems and telecommunications (both wireless and wired). The programme also provides an excellent basis for engineers wishing to update their knowledge or students who wish to go on to do research or enhance their training. It offers exciting opportunities for research, industrial collaboration and learning in the fast-growing field of electrical and electronic engineering.

### Programme structure

The programme is operated on a modular basis where you will follow a series of taught modules (120 credits), followed by a research project (60 credits) undertaken during the summer period. You will be taught using the latest advances in teaching methods and electronic resources. If you have taken any of the modules as part of a BEng/ MEng degree programme at the University of Nottingham, you are not allowed to take those modules for a second time.

#### Typical core modules

- Research Project
- Electrical and Electronic Fundamentals for MSc Research project organization and design

#### Typical optional modules

- Advanced AC drives\*
- Advanced Control System\*
- Advanced Power Conversion
- Artificial Intelligence System
- Digital Signal Processing for Telecommunications, Multimedia and Instrumentation
- Electronic Design
- Energy Conversion for Motor and Generator Drives
- Hardware Accelerated Computing
- Hardware Description Language (HDL) for Programmable Logic\*
- Mobile Communications\*
- Power Electronic Design
- Project in Digital Signal Processing
- Very Large Scale Integration (VLSI) Design

\* These modules can be taken with or without a project.

Entry requirements	English language requirements
An upper second class honours degree (or international equivalent) in electrical and electronic engineering or a related discipline. Non-UK qualifications will be assessed against this standard.	IELTS (Academic): 6.0 (with no less than 5.5 in each element)
	TOEFL (iBT): 79 (minimum 17 in Writing and Listening, 18 in Reading, 20 in Speaking)
	PTE (Academic): 65 (with no less than 59 in each element)
	MUET: Band 4

Please also refer to our entry requirement guidelines on page 67.

# Mechanical, Materials and Manufacturing Engineering

## Teaching and learning

The MSc Mechanical Engineering programme offers you the opportunity to study advanced topics in mechanical engineering, covering engineering science, design and technology. From a broad base, it builds on our key research and academic strengths and concludes with an individual project in the summer term. You will develop the skills to solve problems using both logic and creative/innovative approaches, excellent numerate, computer and analytical skills, the ability to plan, prioritise and work to deadlines under pressure and the ability to communicate with others.

## Professional accreditation

The MSc Mechanical Engineering is accredited by the Malaysian Quality Agency, the Institution of Mechanical Engineers and the Institution of Engineering Designers.

## Career prospects

The MSc Mechanical Engineering enables you to work in many sectors including aerospace, automotive, bioengineering, marine, oil and gas and many more. As a mechanical engineer, you may work in consultancy, design, development, manufacturing, marketing or research, combining technical and managerial experience.



## At a glance

- Our programmes are informed by the world-leading research that ranked the Faculty of Engineering 3rd in the UK for research power in engineering, in the Research Excellence Framework 2014.
- Our close industrial links with companies such as Autoliv Hirotako, Dyson and Panasonic ensure that both our teaching and research are respected and relevant.
- We provide a combination of excellent teaching, first-rate facilities, and an opportunity to achieve qualifications that are highly valued and sought after worldwide.

All entry requirements, fees, school and programme information are intended as a guide and were accurate at the time of printing. For the most up to date information and further details of each programme, please visit [nottingham.edu.my/pgstudy](http://nottingham.edu.my/pgstudy)

- +60 3 8924 8686
- [nottingham.edu.my/make-an-enquiry](http://nottingham.edu.my/make-an-enquiry)
- m3unmc
- UoNMalaysia
- [nottingham.edu.my/engineering/mechanical](http://nottingham.edu.my/engineering/mechanical)



Mechanical, Materials and Manufacturing Engineering	Duration	Intake	Malaysian fees	International fees
<b>Taught programmes</b>				
<b>MSc Mechanical Engineering</b> UNM/KPM-JPT(R2/521/7/0095)9/24	1 year full time	September	RM53,300 per programme	RM59,900 per programme

## Taught programmes

### MSc Mechanical Engineering

The MSc programme offers you the opportunity to study advanced topics in mechanical engineering, covering engineering science, design and technology. From a broad base, it builds on our key research and academic strengths and concludes with an individual project in the summer term. You will develop skills including the ability to solve problems using both logic and creative/innovative approaches, excellent numerate, computer and analytical skills, the ability to plan, prioritise and work to deadlines under pressure and the proficiency to communicate with others.

### Programme structure

The MSc Mechanical Engineering consists of 70 credits of core modules and 50 credits of optional taught modules, along with a 60-credit summer individual project often linked with industrially sponsored research. Projects include experimental analyses, design oriented studies and the development of mathematical or computational models. The compulsory modules will teach you about the latest, cutting-edge developments in engineering from our world-leading research groups. You will also be able to choose from a number of optional modules which will allow you to focus your studies on your areas of interest.

#### Typical core modules

- Advanced Engineering Design
- Advanced Technology Review
- Finite Element Analysis or Computational Fluid Dynamics
- Individual Postgraduate Project
- Integrated Systems Analysis
- Research Planning

#### Entry requirements

An upper second class honours degree (or international equivalent) in mechanical engineering or a related discipline. Non-UK qualifications will be assessed against this standard.

#### English language requirements

IELTS (Academic): 6.0 (with no less than 5.5 in each element)

TOEFL (iBT): 79 (minimum 17 in Writing and Listening, 18 in Reading, 20 in Speaking)

PTE (Academic): 65 (with no less than 59 in each element)

MUET: Band 4

Please also refer to our entry requirement guidelines on page 67.

#### Typical optional modules

- Additive Manufacturing and 3D-Printing
- Advanced Dynamics and Vibration
- Aircraft Propulsion Systems
- Computer Modeling Technique
- Conservation and Recycling of Materials
- Entrepreneurship for Engineers
- Fibre Reinforced Composites Engineering
- Finite Element Analysis in Structural Mechanics
- Internal Combustion Engines
- Introduction to Aerospace Technology
- Introduction to Automotive Technology
- Lean Manufacturing
- Making Metals Perform
- Mathematical Techniques in Partial Differential Equations for Engineers
- Mathematics for Engineering Management
- Polymer Engineering
- Power Generation and Carbon Capture
- Robotics and Automation Technology
- Statistical Process Control and Quality Improvement
- Stress Analysis and Materials Models
- Thermofluids 3

Project work in Mechanical Engineering lets students apply what they have learnt to solve real industry problems.



# Science

Biomedical Sciences	50
Biosciences	53
Computer Science	56
Environmental and Geographical Sciences	59
Pharmacy	62
Psychology	64

Realise it

Analyse it

Prove it

## Biomedical Sciences

### Teaching and learning

The dynamic world of biomedical sciences underpins much of modern healthcare. As illnesses and treatments become more sophisticated, so does the need for more understanding of the human body and the effects of drugs and diseases. The diversity of this subject area is reflected in the key disciplines that comprise the Division of Biomedical Sciences: anatomy, biochemistry, microbiology, immunology, neuroscience, pharmacology and physiology. The department employs international scientists who are experienced in their field of expertise, providing you with scientific knowledge and practical skills. Students completing a research degree can undertake molecular or non-molecular research. Molecular research involves using cutting-edge molecular biology techniques, while non-molecular research utilises core-techniques.

### Research

The Division of Biomedical Sciences is a fantastic place to build a scientific career. Our academics are passionate about research in the areas of tropical medicine (including both communicable and non-communicable diseases); and pedagogy in science research. Our three research clusters highlight the research expertise and contribute to the better understanding and management of diseases that are mostly highly prevalent in the tropics.

### Non-communicable diseases (NCDs)

NCDs and their associated risk factors are a significant and growing global public health problem. The four major types of NCDs include diabetes, cardiovascular diseases, cancer and chronic respiratory diseases. We aim to offer innovative, integrative and sustainable options to combat NCDs in Malaysia through collaborative research projects. Our research focuses on revealing fundamentals of NCDs and finding new-treatments for various NCDs.

### Infections and Immunity

Infectious diseases remain a common yet overwhelming threat in both community and hospital settings. The healthcare and economic burden from infections is exacerbated by the rapid emergence and spread of resistant bacteria strains, highlighting the utmost importance to search for new anti-infection strategies. Our research in this theme brings together several complementary areas, including bacterial pathogenesis, host immunity, drug resistance, vaccine development and novel antimicrobial treatment for infections.

### Pedagogy in Science

New generations value self-engagement and technology. We aim to provide research and technology-led pedagogical methods in science for bringing creativity and innovation in Science teaching to make students feel joyful in learning science and taking the initiatives to cultivate the life-long self-learning process.



### At a glance

- The Division of Biomedical Sciences has a reputation for powerful, research-informed teaching.
- You will be taught by scientists who have vast experience in their field of expertise, providing and guiding you with valuable scientific knowledge and practical skills for use in the future.

All entry requirements, fees, school and programme information are intended as a guide and were accurate at the time of printing. For the most up to date information and further details of each programme, please visit [nottingham.edu.my/pgstudy](https://nottingham.edu.my/pgstudy)



+60 3 8924 8686



[nottingham.edu.my/make-an-enquiry](https://nottingham.edu.my/make-an-enquiry)



UNMBiomedicalSciences



UoNMalaysia



[nottingham.edu.my/biomedicalsciences](https://nottingham.edu.my/biomedicalsciences)



## Career prospects

The broadly based scientific training provided by our research degrees offers a diverse choice of career opportunities in areas including biochemistry, biological research, biotechnology, general chemistry, graduate entry medicine, medicine and pharmaceutical and agrochemical science. After completing your postgraduate degree, you can have either a hands-on science career path, such as that of a research scientist or academic researcher, or a hands-off science career path that requires specific scientific knowledge and skills instead. Such careers include application specialists for scientific products and servicing companies, sales and marketing professionals or scientific journal editors.



Biomedical Sciences	Duration	Intake	Malaysian fees	International fees
<b>Research opportunities</b>				
<b>MPhil</b> KPT/JPS(N/421/7/0036)/7/21	1-2 years full-time 2-4 years part-time	February, April, June and September	Molecular: RM67,900 per year* Non-molecular: RM49,100 per year*	Molecular: RM72,600 per year* Non-molecular: RM57,200 per year*
<b>PhD</b> KPT/JPS(N/421/8/0034)/7/21	3-4 years full-time 6-8 years part-time	February, April, June and September	Molecular: RM67,900 per year* Non-molecular: RM49,100 per year*	Molecular: RM72,600 per year* Non-molecular: RM57,200 per year*

\* Part-time students pay half the full-time fee for each year.

## Research opportunities

### MPhil/PhD

We offer high-quality doctoral training to postgraduate students who wish to pursue an MPhil or PhD. As a research student, you will undertake research with staff members to supervise and guide you.

Our current research themes span three main areas:

- Non-communicable diseases (NCDs)
- Infections and Immunity
- Pedagogy in Science

If you are interested in applying, we would recommend that you familiarise yourself with our research areas and staff expertise and then contact us to discuss your research project proposal with the relevant supervisor in the first instance. Do visit our applications page to find out on how to apply.

 [nottingham.edu.my/applications](https://nottingham.edu.my/applications)

Entry requirements	English language requirements
<b>PhD</b>	IELTS (Academic): 6.5 (with no less than 6.0 in each element)
A master's degree (or international equivalent) plus, an upper second class honours degree (or international equivalent) in biomedical sciences, biochemistry, pharmacology, pharmacy or a related scientific discipline. Non-UK qualifications will be assessed against this standard.	TOEFL (iBT): 87 (minimum 20 in Speaking and 19 in all other elements)
or	PTE (Academic): 71 (with no less than 65 in each element)
A first class honours degree (or international equivalent) in biomedical sciences, biochemistry, pharmacology, pharmacy or a related scientific discipline. Non-UK qualifications will be assessed against this standard.	MUET: Band 4
<b>MPhil</b>	
An upper second class honours degree (or international equivalent) in biomedical sciences, pharmacology, pharmacy or a related scientific discipline. Non-UK qualifications will be assessed against this standard.	
Please also refer to our entry requirement guidelines on page 67.	





## Biosciences

### At a glance

- Bioscience is an internationally important and rapidly advancing field, which offers promising careers for well-qualified graduates to make a significant impact in society.
- The School of Biosciences is known for its strong teaching and research leadership in both the fundamental and applied aspects of Biological Sciences and has strong industrial partners globally.
- Both Malaysia and UK campuses achieved outstanding results in the respective Research ratings. Our School was awarded a 5-star rating by the Malaysia Research Assessment (MyRA) for high quality research and innovation. Our University also maintained the top ranking in the 2014 UK Research Excellence Framework (REF) in the subject areas of agriculture, food science and veterinary science.

+60 3 8924 8686  
[nottingham.edu.my/make-an-enquiry](https://nottingham.edu.my/make-an-enquiry)  
 UNMBiosciences  
 @UNMCBiosciences  
[nottingham.edu.my/biosciences](https://nottingham.edu.my/biosciences)

### Research

Our academic staffs have a diverse range of research interests that focus on the development of practical solutions to global challenges that impact life in the tropics.

Research in the School of Biosciences addresses key global challenges which is increasingly focused on the United Nations Sustainable Development Goals (SDG), which includes all aspects of life on earth, from microbes through plants to animals and humans and the ecosystems and environments in which we co-exist. Knowledge and understanding in biosciences are fundamental to our ability to develop practical solutions to many of these key global challenges.

Colleagues within the UNM and UNUK School of Biomedical Sciences collaborate with each other and with other Schools, for example the Division of Biomedical Sciences, School of Environmental and Geographical Sciences and School of Pharmacy, on a diverse range of research projects. We have also developed global partnerships with local and international research groups and institutes, for example the Advanced Agriecological Research Sdn. Bhd. (AAR) and Sime Darby Plantation.

Current research themes within the areas of agriculture, food, nutrition and health include the development of climate resilient crops; the potential of underutilised crops to

contribute to food and nutritional security; reduction of food waste; the molecular basis underlying the susceptibility to non-communicable diseases; the use of microbes for waste recycling; food safety and preservation.

Current exemplar research projects include the development of vaccines to combat tropical diseases; the development of anticancer, antibacterial and antiviral therapeutic agents to combat drug resistance; innovative methods for the control of Ganoderma basal stem rot disease in oil palm and bio-fertiliser production from oil palm wastes; innovative solutions to deliver sustainable crop production and tackling food security with resilient and nutritious crops.

Most of our academic staffs are research active with well-connected national and international research collaborations. We constantly strive to incorporate the latest state of the art technologies into our research.

### Training and learning

With the help from Graduate School, postgraduate researchers and students in School of Biosciences are provided with different training courses. These courses aim to help you develop a range of transferable skills in oral and written communication, career management, networking and team working, research methodology and management, information technology, personal effectiveness as well as teaching and learning.

The School enjoys close training and research links with the UK School. You will have close contact with world class researchers from both campuses. Our training is closely linked to their research, which means that your learning will be up to date, relevant and applicable to the global issues of today.

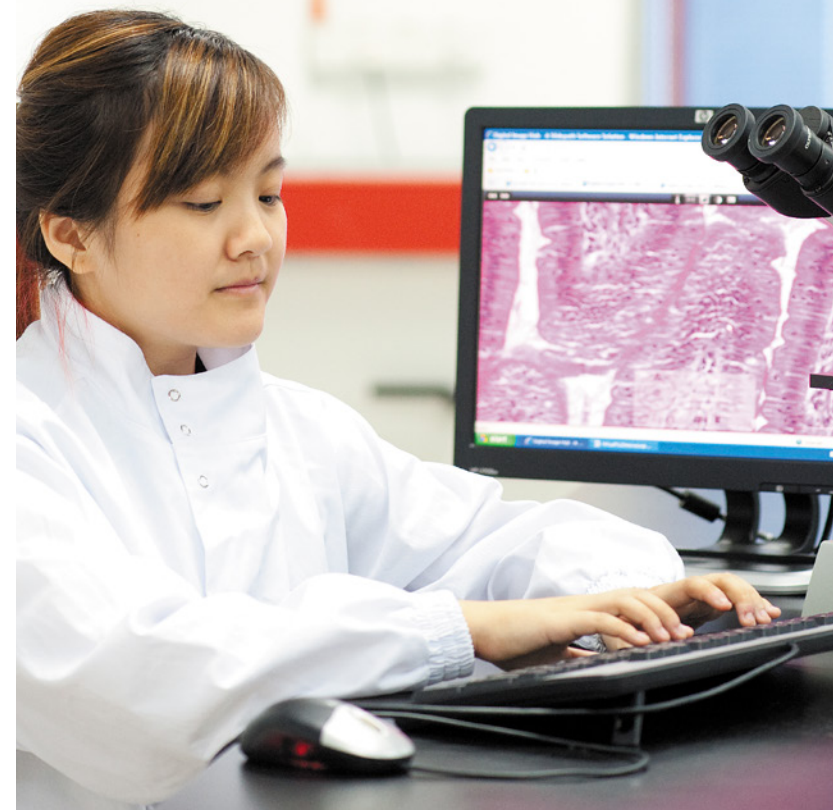
### Career prospects

The broad scientific training offered by the School's postgraduate research study stems from the transferable skills gained through training at a world class facility and this leads to a range of career options. Careers include scientific officers and managers, product development executives, academic teachers, agricultural and environmental consultants, food and nutrition advisers and science writers.

Other career prospects include positions in the industry such as forensic biologists, pharmaceutical development, business management, food manufacturing as well as successful bio-entrepreneurs.

All entry requirements, fees, school and programme information are intended as a guide and were accurate at the time of printing. For the most up to date information and further details of each programme, please visit [nottingham.edu.my/pgstudy](https://nottingham.edu.my/pgstudy)

The School of Biosciences Malaysia has close ties with the UK School to promote world class research and excellence in delivery of research for global impact.





Biosciences	Duration	Intake	Malaysian fees	International fees
<b>Research opportunities</b>				
<b>MRes</b> KPT/JPS(N/421/7/0035)7/21	1-2 years full-time 2-4 years part-time	February, April, June and September	Molecular: RM60,000 per year* Non-molecular: RM49,100 per year*	Molecular: RM60,000 per year* Non-molecular: RM57,200 per year*
<b>MPhil</b> KPT/JPS(N/421/7/0036)7/21	1-2 years full-time 2-4 years part-time	February, April, June and September	Molecular: RM67,900 per year* Non-molecular: RM49,100 per year*	Molecular: RM72,600 per year* Non-molecular: RM57,200 per year*
<b>PhD</b> KPT/JPS(N/421/8/0034)7/21	3-4 years full-time 6-8 years part-time	February, April, June and September	Molecular: RM67,900 per year* Non-molecular: RM49,100 per year*	Molecular: RM72,600 per year* Non-molecular: RM57,200 per year*

\* Part-time students pay half the full-time fee for each year.

## Research opportunities

### MRes/MPhil/PhD

We offer high-quality training to postgraduate students who wish to pursue an MRes, MPhil or PhD. As an independent research student, you will work under a supervisor who will assist you in your research, thesis design and scientific outputs.

Our current broader research themes include:

- biopharming and natural products
- biotechnology and genomics
- crop physiology and crop management
- environmental microbiology
- food technology and postharvest biotechnology
- food microbiology and food safety

- horticulture
- medical and pharmaceutical biotechnology
- nutritional science
- sustainable oil palm for upstream and downstream industry

If you are interested in applying, we would recommend that you familiarise yourself with our research areas and staff expertise and then contact us to discuss your research project proposal with the relevant supervisor in the first instance. Visit our applications page to find out how to apply.

 [nottingham.edu.my/applications](https://nottingham.edu.my/applications)

### Entry requirements

#### PhD

A master's degree (or international equivalent) plus, an upper second class honours degree (or international equivalent) in an agricultural, biological or other relevant science disciplines. Non-UK qualifications will be assessed against this standard.

or

A first class honours degree (or international equivalent) in an agricultural, biological or other relevant science disciplines. Non-UK qualifications will be assessed against this standard.

#### MPhil

An upper second class honours degree (or international equivalent) in a relevant discipline. Non-UK qualifications will be assessed against this standard.

#### MRes

An upper second class honours degree (or international equivalent) in a relevant discipline. Non-UK qualifications will be assessed against this standard.

Please also refer to our entry requirement guidelines on page 67.

### English language requirements

IELTS (Academic): 6.5 (with no less than 6.0 in each element)

TOEFL (iBT): 87 (minimum 20 in Speaking and 19 in all other elements)

PTE (Academic): 71 (with no less than 65 in each element)

MUET: Band 4

# Computer Science

## Teaching and learning

Computing professionals are the architects of the new information age. Affordable high-tech devices have created an environment rife with both challenges and opportunities. With these challenges come great opportunities; opportunities waiting to be exploited by highly-trained computer science graduates. Your learning is supported by a number of activities, which may include lectures, laboratory sessions, small group tutorials, problem classes and programme work. Research-related project work is an important part of all our degrees. Computer science constantly changes and our programmes are taught by people carrying out world-class cutting-edge research, which influences our curriculum. This provides a strong set of core topics and a choice of options in both fundamental and applied computing.

## Research

The main focus of our research lies in the development of various intelligent systems and computational techniques with applications to a range of real-world problems. Our multidisciplinary research includes areas in cognitive computing, computational intelligence, computer vision, fog computing, human-computer interaction, machine learning, operational research, signal processing, simulation modeling, and software engineering.



The research conducted within the school is generally encapsulated by the aims and scope of the Digital Futures research group, which is linked to several University-wide priority areas, including Health. The group complements the research themes pursued at the UK Campus, but also takes full advantage of the specific research expertise of staff involved in cross-campus co-supervision of research projects.

## Career prospects

Our degrees in computer science and software engineering produce highly employable graduates and provide the basis for rewarding and lucrative careers. They will prepare you for careers in a range of technical disciplines including artificial intelligence, multimedia, network management, programming and software engineering and they are also an excellent foundation for doctoral studies.



### At a glance

- The School of Computer Science, UK, was ranked in the top 10 of UK institutions in the 2014 UK Research Excellence Framework, with 88% of its research activity considered at an international level.
- Our Postgraduate Programmes are continuously expanding in response to changes in society and the need to integrate the latest research findings.
- We are committed to educating graduates who are well prepared for the challenges of the knowledge-based economy of the 21st Century.

All entry requirements, fees, school and programme information are intended as a guide and were accurate at the time of printing. For the most up to date information and further details of each programme, please visit [nottingham.edu.my/pgstudy](https://nottingham.edu.my/pgstudy)

-  +60 3 8924 8686
-  [nottingham.edu.my/make-an-enquiry](https://nottingham.edu.my/make-an-enquiry)
-  @UNMComputerScience
-  UoNMalaysia
-  [nottingham.edu.my/computerscience](https://nottingham.edu.my/computerscience)



Computer Science	Duration	Intake	Malaysian fees	International fees
<b>Research opportunities</b>				
<b>MPhil</b> KPT/JPS(N/481/7/0766)7/21	1-2 years full-time 2-4 years part-time	February, April, June and September	RM43,000 per year*	RM50,600 per year*
<b>PhD</b> KPT/JPS(N/481/8/0764)7/21	3-4 years full-time 6-8 years part-time	February, April, June and September	RM43,000 per year*	RM50,600 per year*

\* Part-time students pay half the full-time fee for each year.

## Research opportunities

### MPhil/PhD

We offer high-quality doctoral training to postgraduate students who wish to pursue an MPhil or PhD. As a research student you will work under a supervisor who will assist you in your research and thesis design. Most research programmes are based on research interests of staff members within the school. However, if you are privately funded and wish to pursue research in alternative areas we can provide you the opportunity to consider other specialist projects.

Particular research areas of interest are:

- evolutionary computation
- human computer interaction
- image processing and computer vision
- machine learning
- neural computation
- operational research

A taught programme of research and transferable skills will be available to you, and you may be able to attend lecture programmes on subjects relevant to your research. All postgraduate students are encouraged to present their work at specialised conferences and to publish papers in major scientific and engineering journals. If you are interested in applying, we would recommend that you familiarise yourself with our research areas and staff expertise and then contact us to discuss your research project proposal with the relevant supervisor in the first instance. You can then visit our applications page to find out how to apply.



[nottingham.edu.my/applications](https://nottingham.edu.my/applications)

### Entry requirements

#### PhD

A master's degree with a distinction or merit grade (or international equivalent) plus, an upper second class honours degree (or international equivalent) in computer science, mathematics, or another relevant discipline. Non-UK qualifications will be assessed against this standard.

or

A first class honours degree (or international equivalent) in computer science, mathematics, or another relevant discipline. Non-UK qualifications will be assessed against this standard.

#### MPhil

An upper second class honours degree (or international equivalent) in computer science, mathematics, or another relevant discipline. Non-UK qualifications will be assessed against this standard.

Please also refer to our entry requirement guidelines on page 67.

### English language requirements

IELTS (Academic): 6.0 (with no less than 5.5 in each element)

TOEFL (iBT): 79 (minimum 17 in Writing and Listening, 18 in Reading, 20 in Speaking)

PTE (Academic): 65 (with no less than 59 in each element)

MUET: Band 4







### At a glance

- Our research underpins our teaching, making the University of Nottingham Malaysia experience exciting and challenging, and providing the skills required for a rewarding and successful career.
- We have an innovative, research-led approach to teaching and members of our academic staff are leading international researchers in their specialist fields.

All entry requirements, fees, school and programme information are intended as a guide and were accurate at the time of printing. For the most up to date information and further details of each programme, please visit [nottingham.edu.my/pgstudy](http://nottingham.edu.my/pgstudy)

- +60 3 8924 8686
- [nottingham.edu.my/make-an-enquiry](http://nottingham.edu.my/make-an-enquiry)
- UNMCEGS
- @UNMCEGS
- [nottingham.edu.my/egs](http://nottingham.edu.my/egs)

### Teaching and learning

The School of Environmental and Geographical Sciences provides a stimulating environment for students and staff based on high standards of innovative teaching and research, and individual guidance. We engage with environmental research organisations across Southeast Asia and maintain active links with colleagues at our campuses in the UK and China. In particular, we liaise closely with the Nottingham Geospatial Institute, a world-leading institute at the University of Nottingham's UK campus specialising in spatial and location-based science and engineering, empowered by satellite positioning, remote sensing and integrated technologies. These links help us to provide relevant insights into contemporary environmental issues.

### Research

Research within the School of Environmental and Geographical Sciences is of global and regional significance. Our research into environmental monitoring and management focuses on areas such as remote sensing technologies and applications, spatial analysis and visualisation, and geospatial technology applications to human-environment interactions and disaster management. Another area of interest is ecology and biodiversity conservation in tropical Asia. This research is suited to our Malaysian environment and investigates topics such as the ecology and conservation of Asian

# Environmental and Geographical Sciences

megafauna – elephants, rhinos and tapirs – plant-animal interactions, defaunation and its consequences for ecosystem processes and conservation conflicts. We also have research expertise in lake and river environments hydro-biogeochemistry, hydrological modelling, atmospheric science, agroforestry and landscape ecology.

### Research Centre in Environmental Sustainability (MINDSET)

Our purpose at MINDSET is to conduct, facilitate and inspire interdisciplinary research on tropical environmental issues in Nottingham Malaysia.

MINDSET establish bridges between sound environmental science and innovative technology by changing people's thinking to ensure a sustainable future.

### Career prospects

The University of Nottingham is one of the highest ranked universities in the world for graduate employability. Our graduates are armed with crucial transferable skills that allow them to succeed in the workplace. A well-grounded understanding of environmental issues is increasingly required in both government and industry and our graduates have already gone on to good careers in environmental consultancy and academia, as well as further study.

Environmental and Geographical Sciences	Duration	Intake	Malaysian fees	International fees
<b>Research opportunities</b>				
<b>MRes</b> KPT/JPS(N/421/7/0035)7/21	1-2 years full-time 2-4 years part-time	February, April, June and September	RM49,100 per programme*	RM57,200 per programme**
<b>MPhil</b> KPT/JPS(N/421/7/0036)7/21	1-2 years full-time 2-4 years part-time	February, April, June and September	RM49,100 per year**	RM57,200 per year**
<b>PhD</b> KPT/JPS(N/421/8/0034)7/21	3-4 years full-time 6-8 years part-time	February, April, June and September	RM49,100 per year**	RM57,200 per year*

\* The payment installment scheme will differ for full and part-time students.

\*\* Part-time students pay half the full-time fee for each year.

### Research opportunities

#### MRes/MPhil/PhD

We offer high-quality doctoral training to postgraduate students who wish to pursue an MPhil, MRes or PhD. As a research student, you will work under a supervisor who will assist you in your research and thesis design. The school has close ties to the University's Mindset Research Centre - which promotes and conducts cross-faculty interdisciplinary research in environmental issues. We are interested in research projects relating to our core areas of research in environmental technology development and ecology and biodiversity conservation in tropical Asia.

Our current research projects include:

- agro-tourism and community development
- atmospheric composition and climate variability
- climate change impacts on biodiversity conservation assessment of vulnerability and adaptation strategies
- conservation ecology of large animals, including the Management and Ecology of Malaysian Elephants (MEME)
- conservation planning and prioritization
- disaster recovery monitoring and assessment – remote sensing multi-scale approach
- distributed hydrological modelling: characterisation of watershed, precipitation, runoff processes and hydrography shape
- geospatial applications and capabilities for forecasting river floods and predicting urban watershed; climate change and its impact of terrestrial ecosystems
- hydro-biogeochemical process and climate changes
- institutional responses towards community participation in natural resources management
- location-based crowd-sourcing data quality assessment
- machine learning for remote sensing image analysis and high-performance computing
- mapping and monitoring vegetation with UAVs to enhance ecological knowledge
- optical properties of water from different sources
- remote sensing of intercrops

- social and environmental impacts of mining past, present and future trajectories using remote sensing, GIS and social surveys methods
- social capital and natural resources management
- spatially explicit modelling of ecosystem services for regional-scale natural resource management and land use planning
- sustainable intensification of agroecology for community development and agrobiodiversity conservation
- tropical ecology and biodiversity conservation
- valuing the ecosystem services
- water pollution and public health

The faculty is involved in the management and ecology of the Malaysian Elephant; some sub-projects include:

- development and application of molecular genetic tools for the management and conservation of elephants in Peninsular Malaysia
- development of adaptive management strategies for human-elephant conflict across Asia
- monitoring the effectiveness of translocations as a management and conservation tool for Asian elephants in peninsular Malaysia

Research degrees with joint supervision from the Nottingham UK campus are also possible in a number of research areas, including:

- peat and mangrove swamp sedimentary archives of environmental change
- the importance of mangrove habitats in global and regional carbon budgets
- water quality in the inland waters of Peninsular Malaysia

To apply, we would recommend that you familiarise yourself with our research areas and staff expertise and then contact us to discuss your research project proposal with the relevant supervisor. Then please visit our applications pages to find out how to apply.

 [nottingham.edu.my/applications](http://nottingham.edu.my/applications)



## Entry requirements

## PhD

A master's degree or a master of philosophy degree, plus at least a second class honours degree (or international equivalent) in science, engineering or geography and environment-related subjects. Non-UK qualifications will be assessed against this standard.

or

A first class honours degree (or international equivalent) in science, engineering or geography and environment-related subjects. Non-UK qualifications will be assessed against this standard.

## MPhil

An upper second class honours degree (or international equivalent) in science, engineering or geography and environment-related subjects. Non-UK qualifications will be assessed against this standard.

## MRes

At least a second class honours degree (or international equivalent) in a relevant discipline. Non-UK qualifications will be assessed against this standard.

Please also refer to our entry requirement guidelines on page 67.

## English language requirements

IELTS (Academic): 6.0 (with no less than 5.5 in each element)

TOEFL (iBT): 79 (minimum 17 in Writing and Listening, 18 in Reading, 20 in Speaking)

PTE (Academic): 65 (with no less than 59 in each element)

MUET: Band 4



# Pharmacy

## Teaching and learning

The School of Pharmacy at the Malaysia Campus is equipped with high-quality research facilities, where researchers are also able to access facilities within the school at the UK Campus.

## Research

Research is crucial to the pharmaceutical industry and our academic staff are at the leading edge of scientific and healthcare developments. The current research areas reflect the breadth of expertise of our staff, the acquisition of research funds and recent applications for grants. These are:

- Advanced Materials and Formulation
- Natural Products and Medicinal Chemistry
- Pharmacy Practice and Health Optimisation

Pharmacy Practice and Health Optimisation research are conducted by academics who are qualified to practice as pharmacists in a number of countries across the globe, including Europe, Malaysia and Singapore. Their areas of expertise include: Improving health literacy and disease management, enhancing a pharmacist's role and improving pharmacy education by utilisation of blended learning methods.



## Career prospects

Our degree programmes provide you with an opportunity to embark on an area of research of your interest, allowing you to focus on this niche area of knowledge and make an important contribution to science. Becoming a PhD student at our school means joining a thriving research community and exploring world-changing issues at the forefront of science and healthcare. It also means developing skills prized by academia and the biotechnology, healthcare and pharmaceutical industries. Recent PhD graduates from the School of Pharmacy at the Malaysia Campus can be found working as lecturers in some of the leading pharmacy faculties in the country.

## At a glance

- Established in 1925, Nottingham's School of Pharmacy has a wealth of experience which keeps it at the forefront of academic development and progress.
- We are consistently ranked as the UK's top pharmacy school and were rated as joint 1st in the UK for quality of research in the 2014 UK Research Excellence Framework, with 100% of our research considered to have 'impact on society'.
- In 2007 we received the Queen's Award for Industry in Innovation – one of the UK's highest corporate honours for significantly enhancing the development of new medicines.

All entry requirements, fees, school and programme information are intended as a guide and were accurate at the time of printing. For the most up to date information and further details of each programme, please visit [nottingham.edu.my/pgstudy](http://nottingham.edu.my/pgstudy)



+60 3 8924 8686



[nottingham.edu.my/make-an-enquiry](http://nottingham.edu.my/make-an-enquiry)



UNMPharmacy



UoNMalaysia



[nottingham.edu.my/pharmacy](http://nottingham.edu.my/pharmacy)



Pharmacy	Duration	Intake	Malaysian fees	International fees
<b>Research opportunities</b>				
<b>MPhil</b> KPT/JPS(N/421/7/0036)7/21	1-2 years full-time 2-4 years part-time	February, April, June and September	RM49,100 per year*	RM57,200 per year*
<b>PhD</b> KPT/JPS(N/421/8/0034)7/21	3-4 years full-time 6-8 years part-time (Malaysian students only)	February, April, June and September	RM49,100 per year*	RM57,200 per year*

\* Part-time students will pay half the full-time fees for each year of study.

## Research opportunities

### MPhil/PhD

We offer high-quality doctoral training to postgraduate students who wish to pursue an MPhil or PhD. As a research student, you will be supervised by at least two experienced academic staff who will guide you through your research project over the period that you are researching at Nottingham. Our main areas of research are as follows.

#### Pharmacy Practice and Health Optimisation

#### Natural Products and Medicinal Chemistry

To take full advantage of the rich biodiversity of Malaysia our award winning academic staff aim to discover and develop therapeutic and related agents based on natural products.

- Natural Product Discovery
- Biological Evaluation and Mode of Action of Natural Products

#### Advanced Materials and Formulation

In order to meet the emerging challenges of healthcare this thriving research community aims to develop innovative new delivery systems.

- Nanotechnology and Nanoparticle Sensing System
- Personalised Medicines
- Rectal Drug Delivery

Please visit our website for a complete list of current research projects under specific academics/researchers. If you are interested in applying, we would recommend that you familiarise yourself with our research areas and staff expertise and then contact us to discuss your research project proposal with the relevant supervisor in the first instance. Please then visit our applications pages to find out how to apply.



[nottingham.edu.my/applications](https://nottingham.edu.my/applications)

#### Entry requirements

##### PhD

A master's degree (or international equivalent) plus, an upper second class honours degree (or international equivalent) in pharmacy or a related scientific discipline. Non-UK qualifications will be assessed against this standard.

or

A first class honours degree (or international equivalent) in pharmacy or a related scientific discipline. Non-UK qualifications will be assessed against this standard.

##### MPhil

An upper second class honours degree (or international equivalent) in pharmacy or a related scientific discipline. Non-UK qualifications will be assessed against this standard.

Please also refer to our entry requirement guidelines on page 67.

#### English language requirements

IELTS (Academic): 6.5 (with no less than 6.0 in each element)

TOEFL (iBT): 87 (minimum 20 in Speaking and 19 in all other elements)

PTE (Academic): 71 (with no less than 65 in each element)

MUET: Band 4

# Psychology



## Teaching and learning

Over the past two decades, psychology has become one of the most popular degree topics in the world. It is a fascinating subject that helps us to understand the ways in which our minds, brains, relationships and societies work. At our Malaysia Campus, we have first-class facilities and talented scholars working on cutting-edge research. We also enjoy connections with other leading universities across the world and undertake collaborative research with a range of partners both locally and internationally.

## Research

### Our research spans nine themes:

Active vision research investigates the way the brain handles visual information and focuses on visual cognition and visuomotor coordination in humans and apes.

Visual ecology research examines how visual perception and cognition are determined by people's knowledge or prior expectations about the characteristics of their living environment.

Face and object processing research investigates the way our visual system processes and recognises complex visual stimuli, such as faces.

Evolutionary psychology research revolves around the idea that theories from evolutionary biology can shed light on human psychology. Among other things, it focuses on the evolutionary origins of

altruistic behaviour and human sex differences.

Memory research investigates the biological and cultural factors influencing the development of autobiographical memory across the lifespan and examines the role of autobiographical memory in the development and maintenance of depression and posttraumatic stress disorder (PTSD).

Language and development research includes multilingual processing in adulthood, interactions between language acquisition and other aspects of cognitive development, differences between monolingual and multilingual language acquisition, and the role of the learning environment on lexical acquisition.

Autism research focuses on intercultural differences in behaviour and cognition in Autism Spectrum Disorders (ASD). ASD characteristics and attitudes towards ASD are studied in individuals with and without ASD.



## At a glance

- Our work at University spans a wide spectrum of psychological investigation. The School of Psychology is ranked in the top 10 in the UK for research power in the 2014 UK Research Excellence Framework (part of the unit of assessment for psychology, psychiatry and neuroscience).
- Postgraduate research students benefit from formal training to develop and enhance academic, personal and employment-related skills and may also get the opportunity to collaborate with colleagues at the School of Psychology in the UK.

All entry requirements, fees, school and programme information are intended as a guide and were accurate at the time of printing. For the most up to date information and further details of each programme, please visit [nottingham.edu.my/pgstudy](https://nottingham.edu.my/pgstudy)



+60 3 8924 8686



[nottingham.edu.my/make-an-enquiry](https://nottingham.edu.my/make-an-enquiry)



UNMPsychology



@UNMCPsychology



[nottingham.edu.my/psychology](https://nottingham.edu.my/psychology)



Ageing research aims to identify factors that predict healthy brain ageing across ethno-regional groups. It examines and compares risk and protective factors for dementia, cognitive and functional decline cross-nationally through international data sharing and harmonisation.

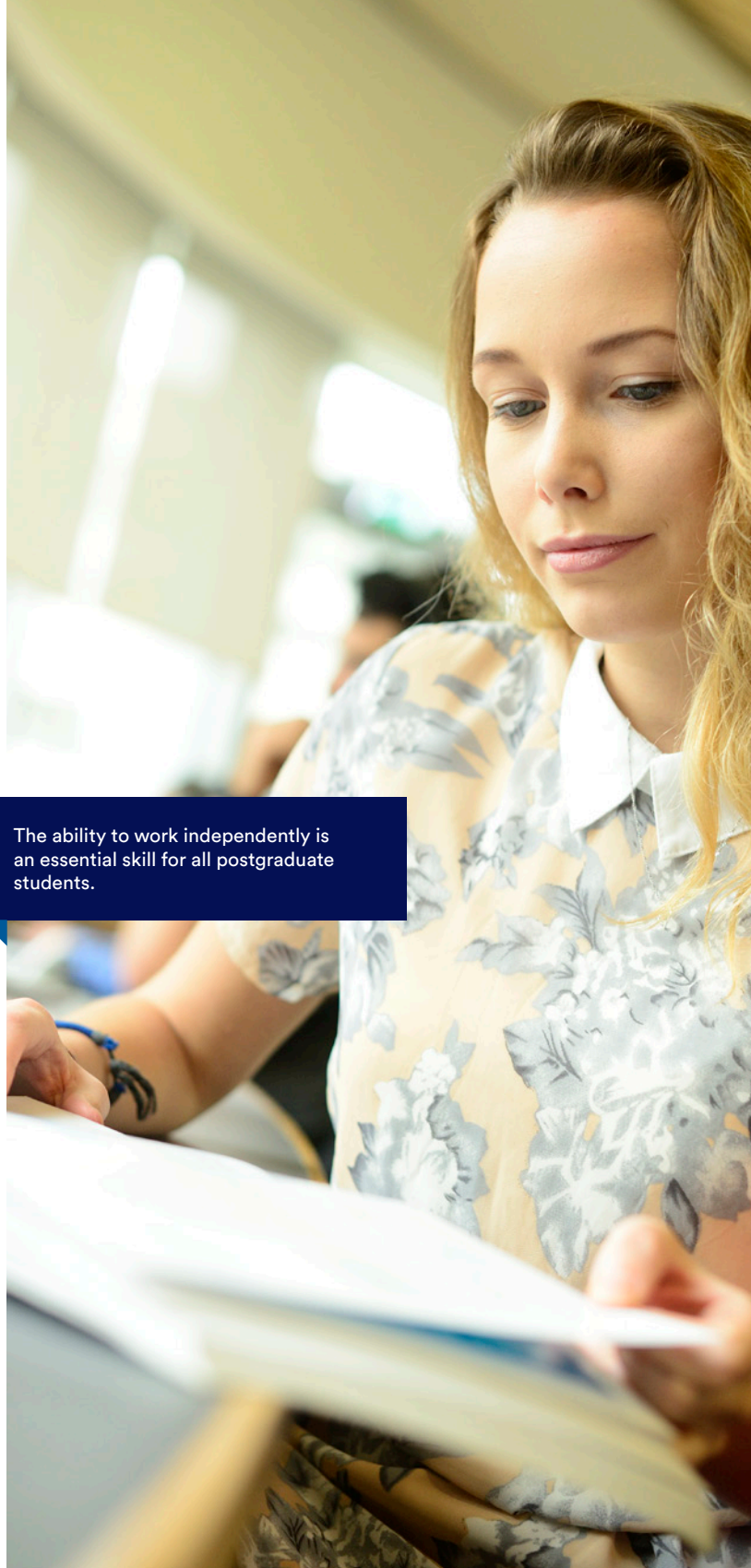
Social psychology research investigates various psychosocial factors that underlie the current issues associated with sustainability and liveability. Further, we aim to develop adequate solutions for the sustainable development of society by utilising various psychological methods.

### Career prospects

Starting a PhD in this school can lead to rewarding careers in clinical, health, educational, and occupational psychology, and criminology.

Psychologists are also welcome in many other contexts, such as human resource and general management, marketing, and as members of research or design teams producing new products. Our research degrees often lead to careers in high ranking research institutions or in clinical settings, government roles or management consultancies.

The ability to work independently is an essential skill for all postgraduate students.



Psychology	Duration	Intake	Malaysian fees	International fees
<b>Research opportunities</b>				
<b>MRes</b> KPT/JPS (N/310/7/0015)7/21	1-2 years full-time 2-4 years part-time	February, April, June and September	RM43,000 per year*	RM50,600 per year*
<b>MPhil</b> KPT/JPS (N/310/7/0013)7/21	1-2 years full-time 2-4 years part-time	February, April, June and September	RM43,000 per year*	RM50,600 per year*
<b>PhD</b> KPT/JPS (N/310/8/0014)7/21	3-4 years full-time 6-8 years part-time	February, April, June and September	RM43,000 per year*	RM50,600 per year*

\* Part-time students will pay half the full-time fees for each year of study.

### Research opportunities

#### MPhil/PhD

We offer high-quality doctoral training to postgraduate students who wish to pursue an MPhil or PhD. As a research student, you will work with two members of our academic staff and become a member of one of our seven research groups. Due to the diverse nature of research within the school, there are many different possibilities for MPhil and PhD projects. Progression through both programmes involve satisfactory completion of annual research activity-reports as well as some optional taught programmes. This rigorous training is designed to provide you with necessary research skills and equip you with communication, information technology, personal development and employment-related skills. This training can be tailored to meet your individual needs. You will also be expected to attend the school's research seminars. To find out about the specific interests of our research groups, please visit our website.

[nottingham.edu.my/psychology/research](https://nottingham.edu.my/psychology/research)

If you are interested in applying, we would recommend that you familiarise yourself with our research areas and staff expertise and then contact us to discuss your research project proposal with the relevant supervisor in the first instance. Please visit our applications pages to find out how to apply.

[nottingham.edu.my/applications](https://nottingham.edu.my/applications)

Entry requirements	English language requirements
<b>PhD</b>	IELTS (Academic): 6.5 (with no less than 6.0 in each element)
A master's degree or a master of philosophy degree, plus at least an upper second class honours degree (or international equivalent) in psychology or related disciplines. Non-UK qualifications will be assessed against this standard.	TOEFL (iBT): 87 (minimum 20 in Speaking and 19 in all other elements)
or	PTE (Academic): 71 (with no less than 65 in each element)
A first class honours degree (or international equivalent) in psychology or related disciplines. Non-UK qualifications will be assessed against this standard.	MUET: Band 4
<b>MPhil/MRes</b>	
An upper second class honours degree (or international equivalent) either in psychology or in a related subject relevant to the chosen area. Non-UK qualifications will be assessed against this standard.	
Please also refer to our entry requirement guidelines on page 67.	



# How to apply

You can apply online via our Online Admissions Application Portal (MyNottingham). To create an application you will need to register to create an account, or log in if you have previously applied online.

+6 03 8924 8686

[mynottingham.nottingham.edu.my](https://mynottingham.nottingham.edu.my)

## Application fee

The University charges an application fee of RM100 for Malaysian applicants and RM200 for international applicants for all programmes. This fee applies to online and paper applications.

[nottingham.edu.my/applications](https://nottingham.edu.my/applications)

## Step 1

Apply online or complete the paper application form (details above).

Supporting documents needed

- academic certificates and transcripts of previous studies
- copy of ID page of passport for international applicants
- copy of NRIC for Malaysian applicants
- English language qualifications (if applicable)
- one academic reference form for postgraduate taught and two references for MBA and postgraduate research

If you are a postgraduate research applicant please also submit an outline of your research interest/proposal.

## Step 2

An acknowledgement email (with Nottingham ID) will be sent to you upon receipt of your application.

## Step 3

Your application will be considered by our admissions tutors and a decision will be made within two working weeks. It can take up to three months for postgraduate research applications to be processed. A confirmation email will be sent to applicants once a decision has been made.

Successful applicants will receive a notification through email and will be able to log in to MyNottingham to download the following documentation (hard copies are not provided):

- offer Letter
- offer pack (containing next steps, accommodation, student visa, Wellbeing and Learning Support Services and payment of tuition fees information) - link will be provided in the offer letter

Applicants and agents will be able to view the progress of applications and make payments online through MyNottingham.

## Step 4

Offer holders will be given a four-week deadline to accept the offer and pay a tuition fee deposit of RM1,000 (Malaysian offer holders) or RM2,000 (International offer holders) before the lapsed date in the offer letter. This amount shall be offset from the first semester's tuition fee.

The tuition fee deposit is not applicable to postgraduate research applicants.

## Step 5

You will be able to apply for on-campus accommodation and your student visa after you have accepted your offer and paid the tuition fee deposit.

## Step 6

Prior to registration day, you will receive an email which contains registration information.

It is important to note that the University of Nottingham Malaysia requires all offer holders to complete two different parts of the registration process - online registration and in person registration.

## Entry requirement guidelines

Applicants must have graduated from an approved university. Other equivalent qualifications will be considered on a case-by-case basis.

Entry requirements in the prospectus and website may not always apply and individual offers may vary.

## English language requirement guidelines

IELTS, TOEFL and PTE (Academic) test results must be less than two years old and all IELTS must be the academic version of the test.

MUET results are valid for five years from the date of the release of results.

## Applying for a PhD or MPhil

University of Nottingham Malaysia offers a range of research degrees across all faculties and most schools and departments. You will still have to complete a formal application for a PhD or MPhil programme. However, there are some additional steps that you will need to take before you begin your application.

### Step 1

Choose a topic and consider which subject area you are interested in and draft a brief outline that you could email to or discuss with a potential supervisor.

### Step 2

Find a potential supervisor by using the relevant school or faculty pages for your subject to explore the research interests of our academics. We advise that you begin to look for a supervisor before you apply, as this will reduce the length of time it takes to complete the application process.

### Step 3

Create your proposal which should demonstrate an awareness of your chosen topic and an indication that you have considered the parameters of your research. Once you have discussed this with your potential supervisor they will advise you on your next steps.

### Step 4

Apply through the University's formal application process.

## International students

Please submit your application at least three months before the intake in order to process your visa. The University does not guarantee the availability on accommodation and completion of visa application before the last date of registration if application is made in less than three months. We can only process your application if all the required forms and documents are submitted and payment of the application fee is made.

Please note that international students can only study part time by fulfilling their visa requirements. For further information, please contact us.

+60 3 8924 8686

[nottingham.edu.my/make-an-enquiry](https://nottingham.edu.my/make-an-enquiry)

## What are we looking for?

Consideration will be given to whether applicants will be able to fulfil the objectives of their programme of study and achieve the standards required. A range of factors additional to, and in some cases instead of, formal examination of results are considered in the selection process. These can include:

- additional evidence of achievement, motivation and potential gathered through an interview, assessment of written materials or additional selection tests

- other factors as appropriate to the discipline, such as employment or volunteer work in relevant fields and sustained critical engagement with relevant issues
- the personal statement and reference

## Intakes

### February

- All postgraduate taught programmes in the School of Education (excluding Postgraduate Certificate in Higher Education (International))
- Selected postgraduate taught programme in the Division of Organisational and Applied Psychology
- All postgraduate taught programmes in the School of Politics, History and International Relations
- Part-time MBA programmes in Nottingham University Business School
- Selected part-time postgraduate taught programmes in Nottingham University Business School
- All postgraduate research programmes (excluding postgraduate research programme in the School of Economics)

### April

- All postgraduate research programmes (excluding postgraduate research programmes in the School of Economics, School of English and Nottingham University Business School)

### June

- All postgraduate taught programmes in the School of Education
- Part-time MBA programmes in Nottingham University Business School
- All postgraduate research programmes (excluding postgraduate research programmes in the School of Economics, School of English and Nottingham University Business School)

### September

- All postgraduate taught programmes [excluding Postgraduate Certificate in Higher Education (International)]
- All research programmes

### November

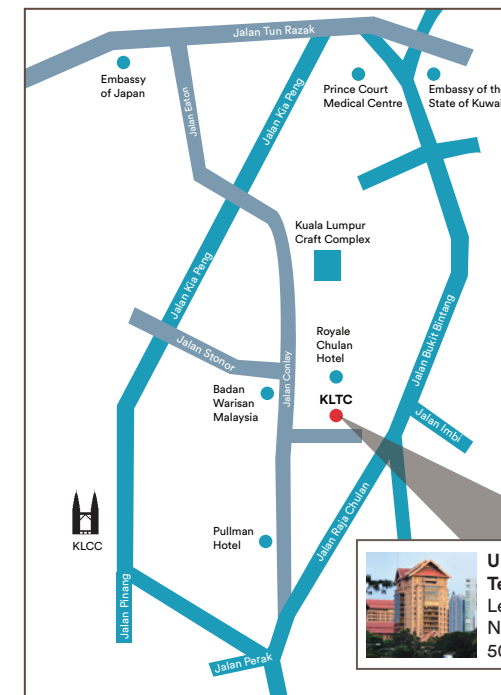
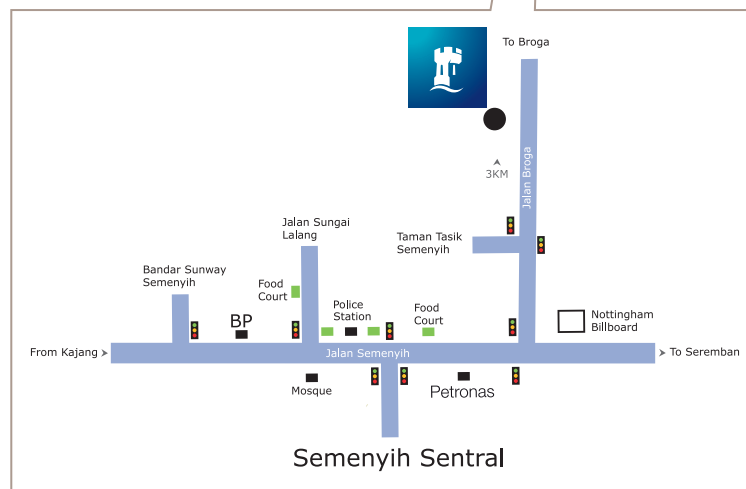
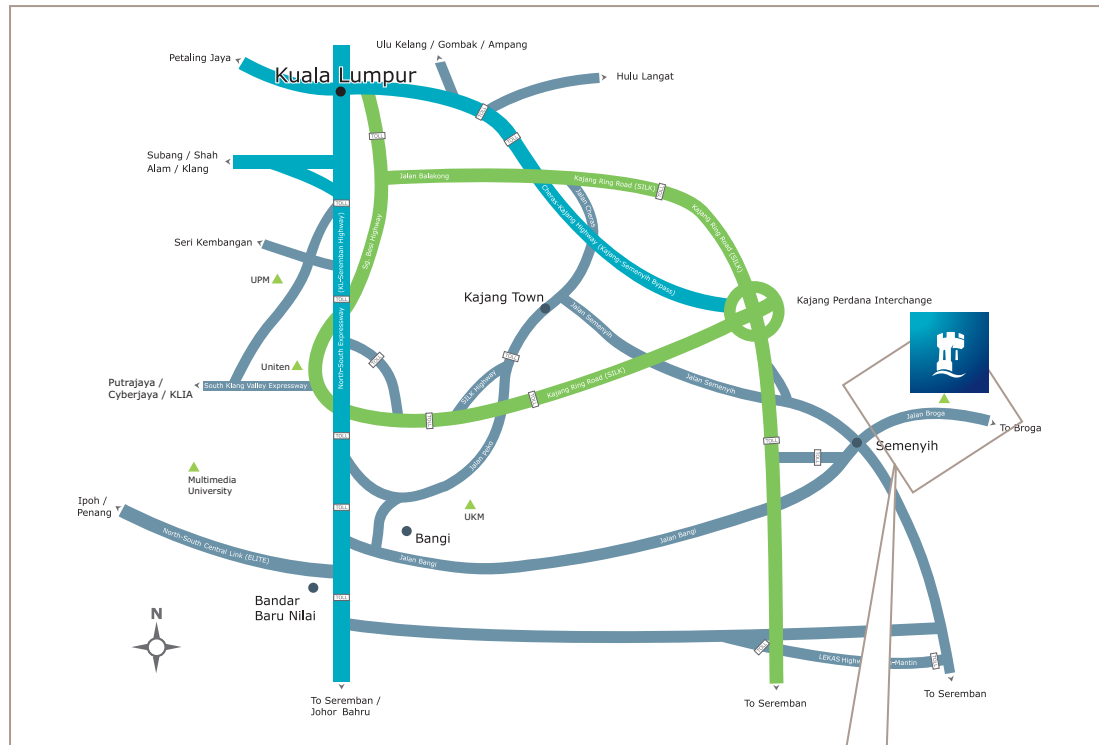
- All postgraduate taught programmes in the School of Education
- Part-time MBA programmes in Nottingham University Business School
- Selected part-time postgraduate taught programmes in Nottingham University Business School



# Where to find us

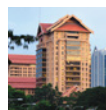
University of Nottingham Malaysia can be reached easily by train, bus, car or taxi. The University provides bus services for staff and students to/from Kajang KTM station and Terminal Bersepadu Selatan (TBS) next to Bandar Tasik Selatan LRT station.

 [nottingham.edu.my/maps](http://nottingham.edu.my/maps)



**University of Nottingham Malaysia**  
(473520-K)  
Jalan Broga, 43500 Semenyih,  
Selangor Darul Ehsan, Malaysia

 **+60 3 8924 8686**  
 **[nottingham.edu.my/make-an-enquiry](http://nottingham.edu.my/make-an-enquiry)**  
 **UoNMalaysia**  
 **UoNMalaysia**  
 **[nottingham.edu.my/maps](http://nottingham.edu.my/maps)**

 **University of Nottingham Teaching Centre**  
Level 2, Chulan Tower  
No 3 Jalan Conlay  
50450 Kuala Lumpur, Malaysia



# Index

Programme	Page
Biomedical Sciences MPhil/PhD	52
Biosciences MRes/MPhil/PhD	55
Chemical Engineering MSc	40
Civil Engineering MSc	43
Computer Science MPhil/PhD	57
Electrical and Electronic Engineering MSc	45
Engineering MPhil/PhD	38
Environmental and Geographical Sciences MPhil/MRes/PhD	60
Environmental Engineering MSc	41
Mechanical Engineering MSc	47
Pharmacy MPhil/PhD	63
Psychology MPhil/MRes/PhD	66

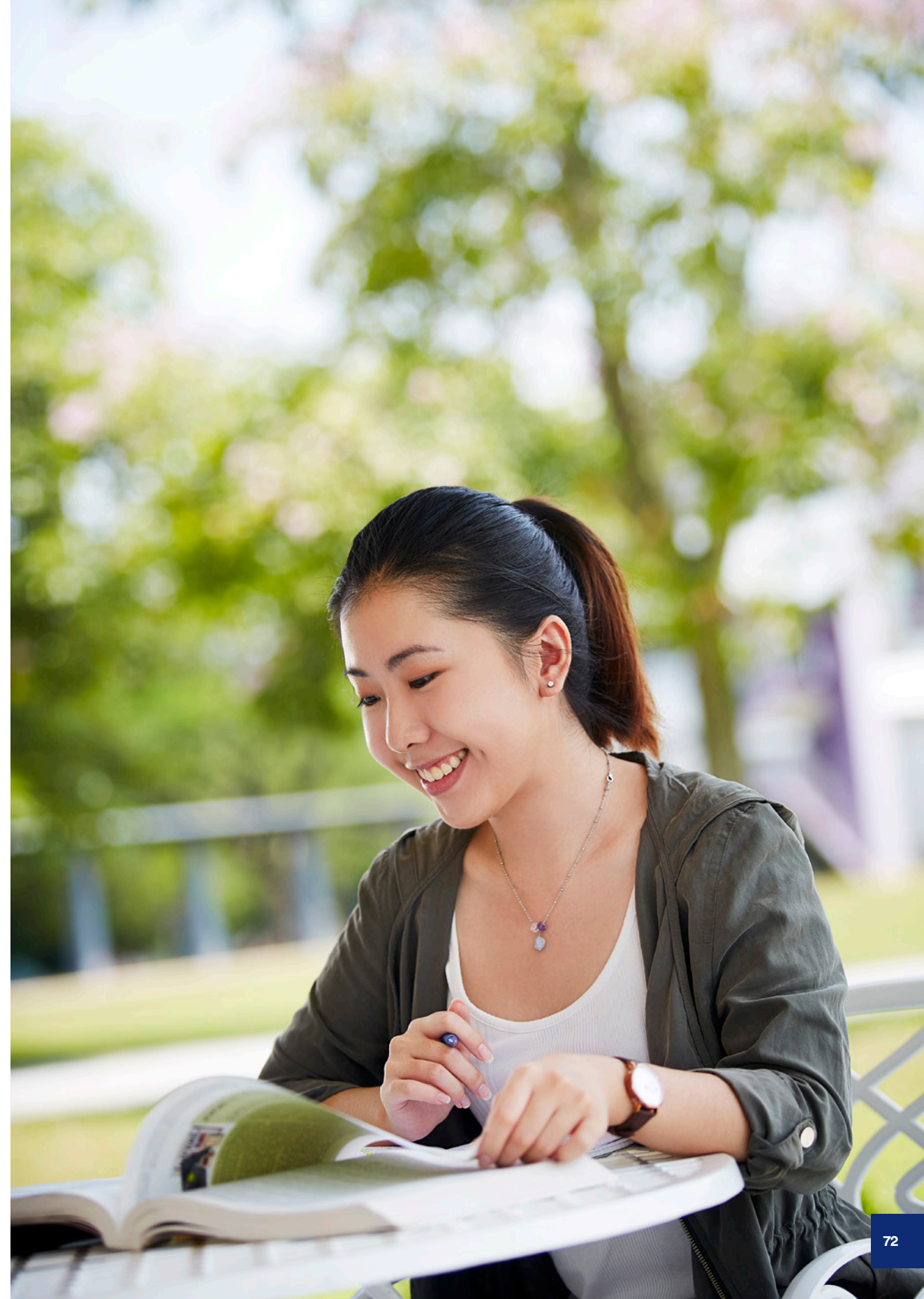
The University of Nottingham has made every effort to ensure that the information in this brochure was accurate when published. Please note, however, that the nature of the content means that it is subject to change from time to time, and you should therefore consider the information to be guiding rather than definitive. You should check the University's website for any updates before you decide to accept a place on a programme by visiting

 [nottingham.edu.my/pgstudy](https://nottingham.edu.my/pgstudy)

Where there is a difference between the contents of this study guide and our website, the contents of the website take precedence and represent the basis on which we intend to deliver our educational services to you.

© University of Nottingham 2020. All rights reserved.

Printed February 2020





# Get social

## Connect with Nottingham

Find out about student life at Nottingham and interact with the University community, anytime, anywhere in the world.

Discover more:



# Explore the world of Nottingham

Visit our inspiring campus on an open day

